

# TXMD 4320

## CAD II

nD Festival 2011

Emerging Design Competition Entries

Taught By: Dr. Lauren Rudd



**Design By:**  
**Caitlin Holliday**



END OF  
THE LINE



These designs are reminiscent of an old unknown land which has yet to be discovered. Any who wander this may not be prepared physically, yet in our hearts we understand this journey and do not fear.



Hand stitched fur panels are applied to the front bottom pants for added interest. There will be detachable fur knee caps as well as versatility when wearing.



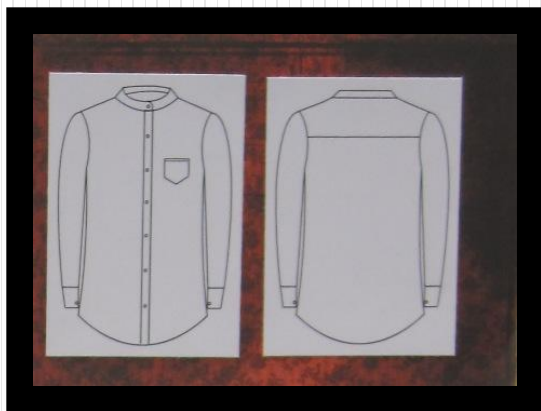
**Design By:**  
**Ashley Adkins**



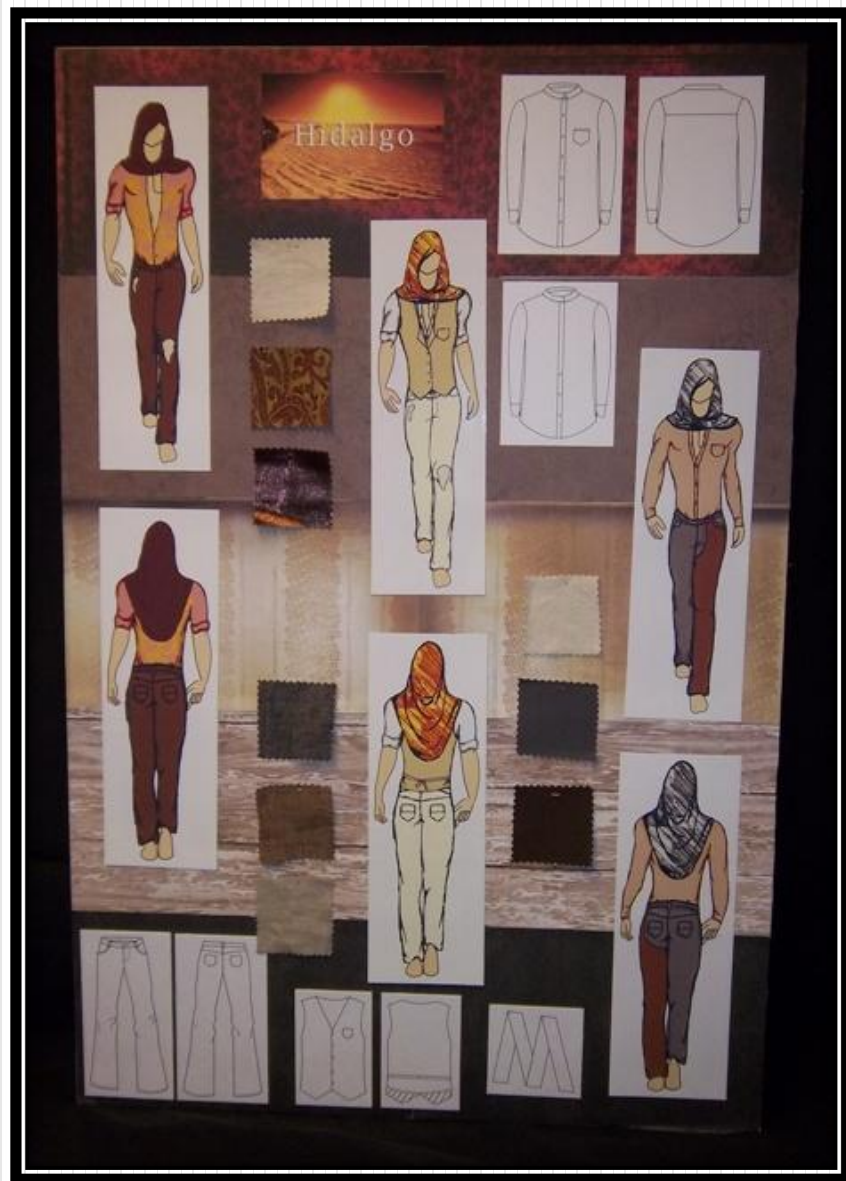
**Design By:**  
**Kelley Thompson**

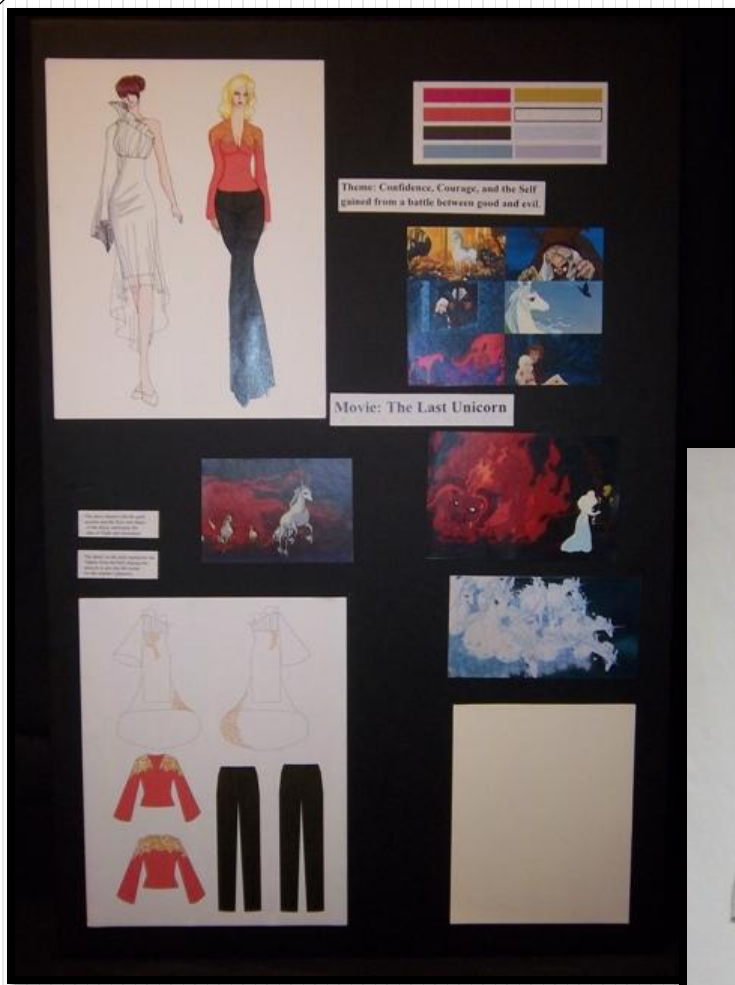






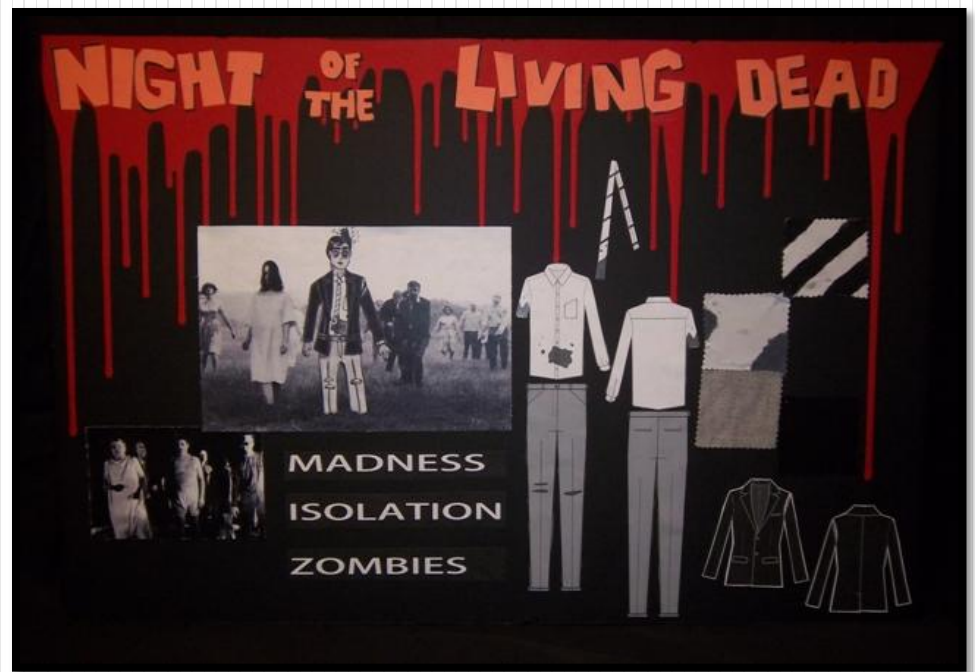
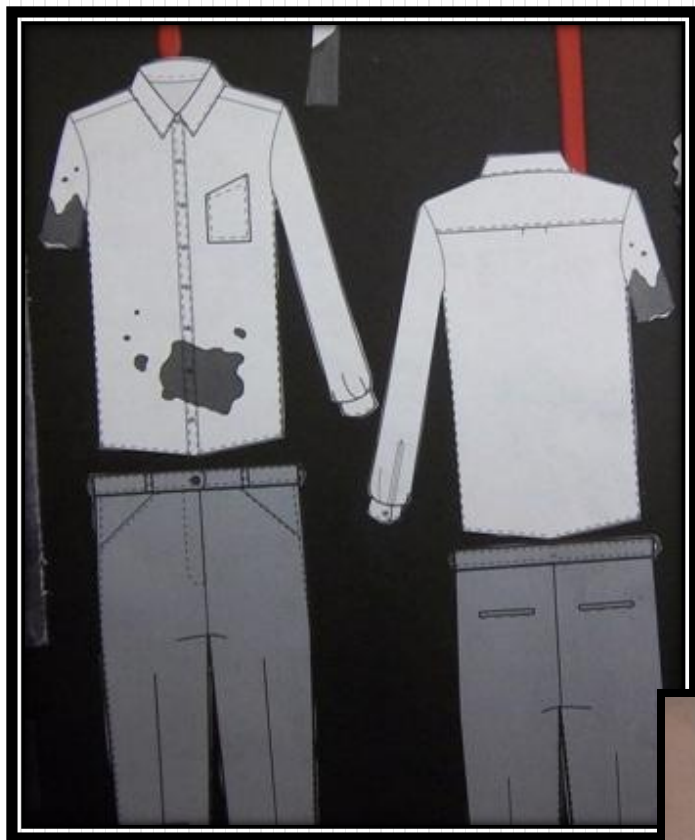
**Design By:  
Ryan Ripley**





**Design By:  
Christina Klins**





**Design By:**  
**Drew Hulse**











**Design By:  
Katie Glasco**

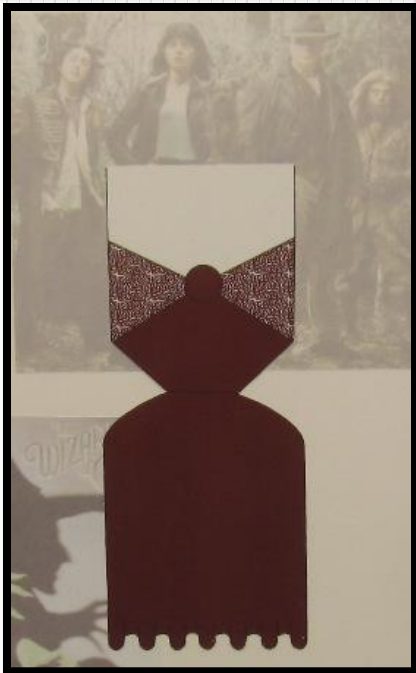




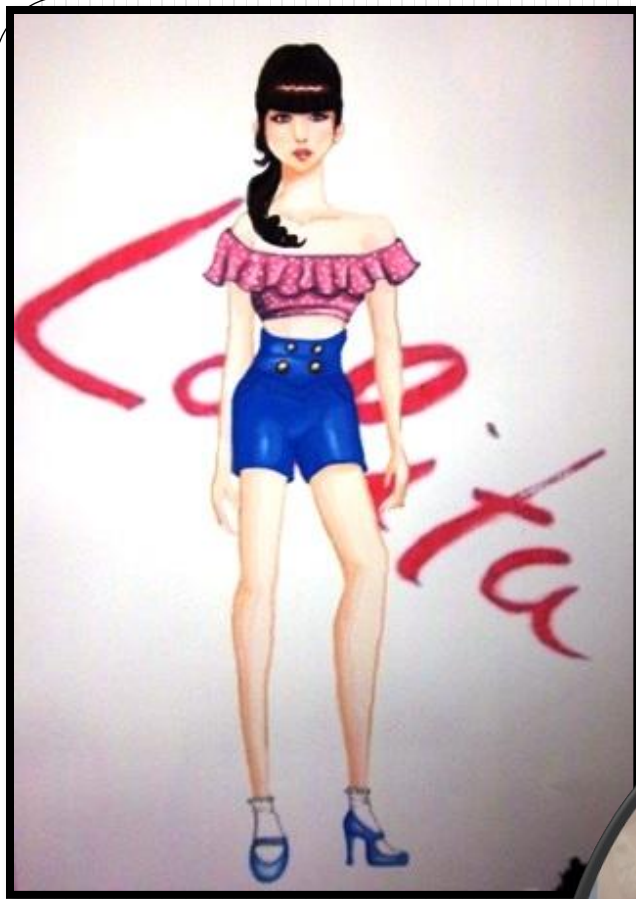
**Design By:  
Sandi Caves**



# Design By: Diaondra Simpson







**Design By:  
Rachel Miller**

## A collage of fashion items. At the top are two leopard-print tops with a scalloped hem. Below them are two dark blue skirts. At the bottom left is a dark blue textured fabric, and at the bottom right is a leopard-print fabric. The background is a cartoon illustration of a person in a jungle setting.





**Design By:**  
**Amy Yang**





# AN EVENING IN WONDERLAND

## Color Story

I want my line to capture the essence of Wonderland and the characters that are in the movie. That is why I have chosen rich and vivid colors. I was inspired by the Queen of Hearts red roses and by the "deck of card" theme. That is why in one garment I have chosen a black, white and red color theme, and in the other a rich rose red color with a green vine to go around the neck like a halter. With both the themes and colors that I have chosen, these dresses would fit nicely into the colorful, whimsical "Wonderland".



## Color Story

I want my line to capture the essence of Wonderland and the characters that are in the movie. That is why I have chosen rich and vivid colors. I was inspired by the Queen of Hearts red roses and by the "deck of card" theme. That is why in one garment I have chosen a black, white and red color theme, and in the other a rich rose red color with a green vine to go around the neck like a halter. With both the themes and colors that I have chosen, these dresses would fit nicely into the colorful, whimsical "Wonderland".

**Design By:  
Shannon Talbott**

