

LOFT PROJECT

Elizabeth Hardison

IDES 3220

FALL 2017

Table of Contents

• Program Summary	1-2
• Adjacency Matrix	3
• Concept Statement	4
• Inspiration Board	5
• Rendered Furniture Plan	6
• 3D Drawings	7
• Material & Finish Boards	8-9

Project Program Summary

- **PROJECT GOALS:** Design a Scandinavian Modern loft that serves as a place to relax, reconnect with family/ friends, and restock.
- **CLIENT BRIEF:** Ms. Eriksson is looking for a place to call home within her nomadic lifestyle. She desires a space that takes her back to her childhood in Iceland, located close to her friends and family. She would like a clean, yet comfortable environment where she can host small get togethers.
- **CLIENT PROFILE:**
 - **INDIVIDUAL**
 - Lily Eriksson
 - Botanist/ World travelling Yoga Instructor
 - Mid- Thirties, single
 - Teaches yoga and visits family/ friends one week out of every month

USER REQUIREMENTS:

- **INDIVIDUAL NEEDS:**
 - Home for traveling lifestyle
 - Yoga room
- **GROUP NEEDS:**
 - Social/ Entertaining
 - Family gatherings

TERRITORIAL REQUIREMENTS

- **Private Space:**
 - Bedroom with a walk-in closet
 - Accessible Master Bath
- **Intermediate Space:**
 - Powder room near entrance
 - Utility Room
- **Public Space:**
 - Foyer
 - Kitchen
 - Living/Dining Room

Determine Client Preferences:

- **Favorite Colors:** Earth tones, White, Black
- **Design Style:** Scandinavian Modern
- **Spatial Qualities:** Open Plan
- **Special interests:** Travel, Yoga, Friends/Family, Botany
- **ACTIVITY REQUIREMENTS:**
 - **Primary:**
Living space
 - **Secondary:**
Bedroom
Yoga/ Green Room
 - **Analyze nature of activities:**
 - Open common area that is highly functional for entertaining
 - Relaxation with friends and family
 - A place to practice yoga/ meditation
 - **Traffic patterns:**
 - **Primary Circulation-**
 - Entry, foyer, living room, kitchen
 - **Secondary circulation-**
 - Within living room, kitchen, bedroom, bathroom, utility room

FF&E REQUIREMENTS

Primary Activities:

Foyer Furniture:

- 2 chairs
- Side table

Foyer Furnishings:

- Table lamp

Kitchen Furniture:

- 3 bar stools

Kitchen Equipment:

- Fridge
- Oven
- Range
- Dishwasher
- Double sink

Living Room Furniture:

- Couch
- 2 Chairs
- Coffee table
- 2 side tables
- Entertainment center

Living Room Furnishings:

- 2 Table lamps
- Floor lamp

Secondary Activities:

Bedroom Furniture:

- Queen-sized bed
- 2 Dressers
- 2 Nightstands
- Lounge chair w/ ottoman

Bedroom Furnishings:

- 2 Table lamps
- Floor lamp

Accessible Bathroom Equipment:

- Roll-in shower
- Toilet

- **Establish Quality Requirements**

- Furniture well crafted with raw materials used
- Easy Maintenance

Aesthetics, historical styles or influence: Scandinavian Modern

Appropriateness, durability, maintenance, indoor air quality, sustainability:

- Use of raw, well crafted materials
- Easily cleanable surfaces

DIMENSIONAL REQUIREMENTS:

- **Furniture Groupings**
 - 15”-17” Seat height
 - “14”-18” seating to coffee table distance
 - 15”-17” coffee table height
 - 26”-30” side table and case piece height
 - 36” counter top height
 - 36” min. hallway width
- **Analyze space**
 - 24’-0” x 68’-0”, 1632 sq. ft.
 - Windows on east and west walls

BUILDING SYSTEMS

- **HVAC:**
 - Central heating and cooling
 - 24” dia. Water heater
 - Electrical Panel in Utility Room
- **Plumbing:**
 - Kitchen, Bathroom, and Utility room share wall for cost efficacy
- **Security and Safety:**
 - Double deadbolt at entry
- **Phones and data:**
 - Internet Connection
 - No landline
- **ENVIRONMENTAL CONCERNS:**
 - **Indoor air quality:**
 - Live Foliage
 - **Sustainability**
 - Utilization of low VOC- emitting products
 - **Access to Nature, Views and Daylight**
 - Two commercial grade windows on the North and South walls

Adjacency Matrix

	Hobby Area	Linen Closet	Laundry Room	Bath-room	Utility Room	Clothing Storage	Bed-room	Dining Area	Kitchen	Living Area	Entry/ Foyer
Entry/ Foyer	●		○	○	○		○	○	●	●	
Living Area	●		○		○				x		x
Kitchen			○	●	●		○	●		●	●
Dining Area			○	●	●				●	● ●	○
Bedroom			●	●		●		●		●	x
Clothing Storage	x						●	x	x	x	x
Utility Room		●	●	●				●		●	
Bathroom			●		●	x	●	●		●	
Laundry Room		●		●	●	x	○	○	○	○	○
Linen Closet							○	○	○	○	x
Hobby Area		x	x	x	x	x					

Primary: ●

Secondary: ○

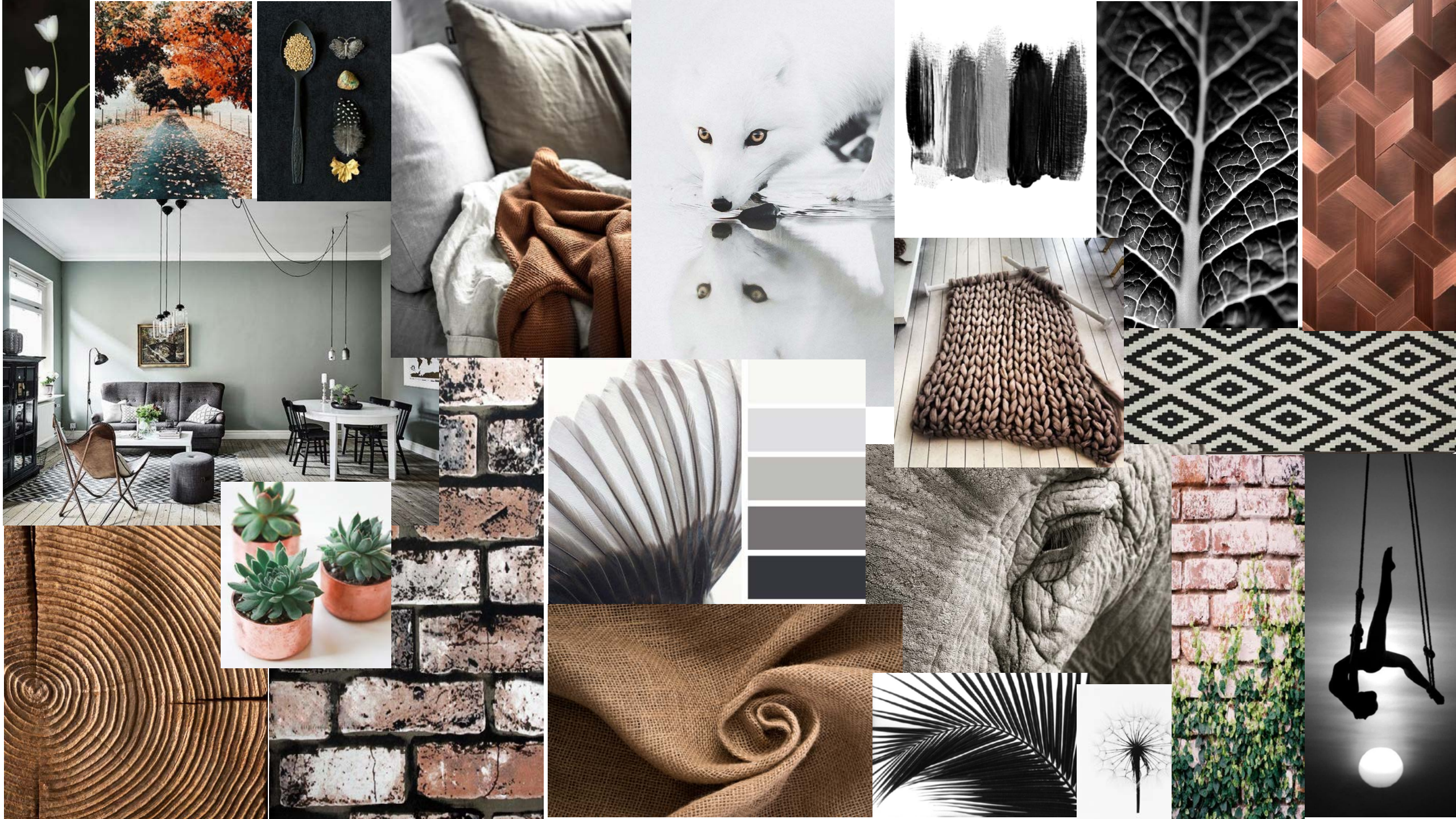
Not Related: x

Concept Statement

The 2017 Loft project in Colorado Springs, Colorado transforms a converted commercial building into a residential city loft for Ms. Lily Eriksson. The Scandinavian Modern design is complimented by muted naturalistic tones of brown, green, white, and black reflecting Ms. Eriksson's birthplace Stockholm, Sweden. Shades of red and orange are added for dynamism, variety, and interest. The project will successfully satisfy the client's goal of creating a safe place within her nomadic lifestyle where she can rest, repack, and visit with her family and friends one week out of the month. The space also fulfills the client's desire for a personal yoga studio/ green room with the addition of an intermediate loft. The design reveals a strong sense of nationalism and craftsmanship in the use of traditional wood and tile materials/ textures for the furniture and finishes. Natural fibers, wool, linen, and hand-woven textiles are used for upholstery material, accentuated with geometric shapes in the accent pillows, carpets, and accessories, highlighting the use of shape and pattern. The interior walls are painted with a off-white, making the space feel clean and pure. Large windows at either end maximize light and air, uniting the interior with the landscape. The exposed brick walls are lightly whitewashed, toning down the harsh reds to create harmony within the space. The foyer, living room, and kitchen are laid with a light, neutral wood plank floor, uniting the public areas of the loft. Three wooden bar stools sit under the peninsula of a U-shaped kitchen, provide a space for a quick meal, or a social area during gatherings. A box-shaped geometric patterned tile takes up the backsplash of the kitchen, creating a point of emphasis, and highlighting the use of shape. The cabinets are finished in a grey-white, uniting the shades of white and black and providing contrast between the wood floors and barstools.

A white honeycomb tile with black diamond inlays dominates the bathrooms and utility room, complimented by the white finishes and black countertops, creating rhythm and variety.

Muted fabrics are used for upholstery material, emphasizing texture with bold pops of white, black, and red in accent pillows/ accessories. The bedroom fills the back of the condo, providing privacy, yet plenty of natural lighting. The bed frame is made of an unfinished wood, reflecting craftsmanship and quality. Parallel to the bed is a reading area, with a large lounge chair accompanied by a matching ottoman. The set is upholstered in a white leather with a geometric pattern stitch, emphasizing shape, form, and contrast. A partition wall is located at the other end of the bedroom, leaving the space free flowing, yet providing privacy for a changing area as well as entrance to the bathroom. The last addition to the design, the intermediate yoga/ green room space, is located above the bathroom and utility rooms, accessed by a wooden L-shaped staircase that separates the foyer from the living room. Placed on the second story in the center of the loft, this area receives the maximum amount of natural light that the space provides, making it an ideal greenroom. The space is enclosed in by glass panel rails, integrating the space into the rest of the loft and creating a sense of expansion and unity.





SCALE: 1/4" = 1'-0"



WALL



ACCENT

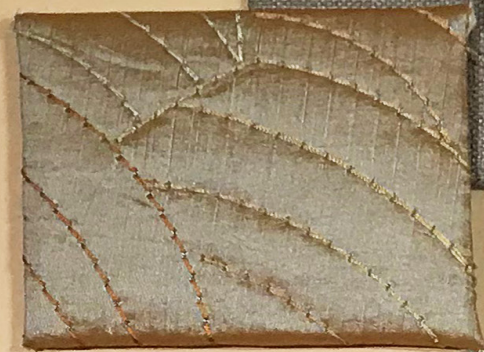
CHAIR UPHOLSTERY



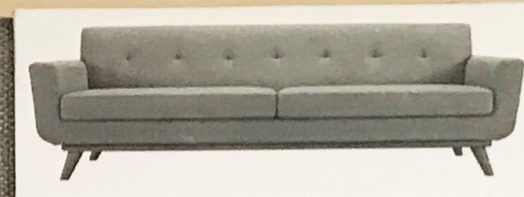
PILLOW



PILLOW



SOFA UPHOLSTERY



FURNITURE FINISH



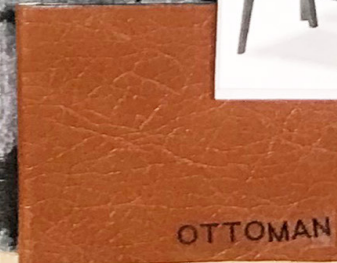
WALL COVER



LOUNGE UPHOLSTERY



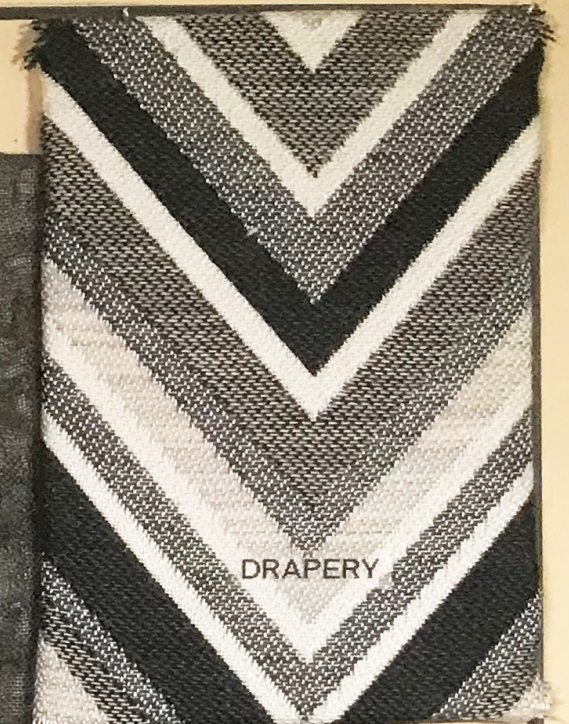
OTTOMAN



PILLOW



DRAPERY



BED SPREAD



WOOD FLOOR





DRAPERY



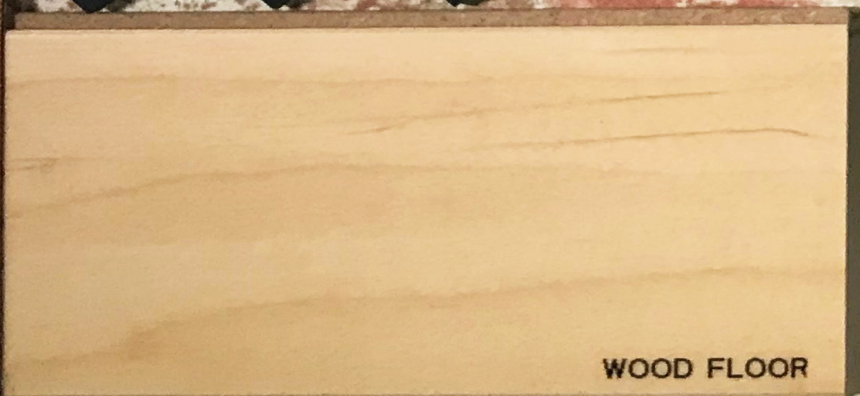
KITCHEN COUNTER



BACKSPLASH



STOOL UPHOLSTERY



WOOD FLOOR



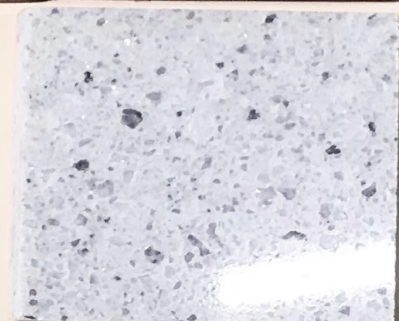
MASTER BACKSPLASH



BATH COUNTER



CABINETS



LAUNDRY COUNTER



GUEST BACKSPLASH



STAIR GLASS



BATH FLOOR



YOGA FLOOR