

# Tobermory Chamber of Commerce

Nicole Webb

IDES 4120 Interior Design Portfolio

Fall 2017



# Table of Contents

---

A-1	-	Building Sections
A-2	-	Reception Desk
A-3	-	Reception Desk
A-4	-	Door Schedule
A-5	-	Ceiling Sections
A-6	-	Ceiling Sections
A-7	-	Finish Schedule & Finish Specifications
E-1	-	Reflected Ceiling Plan
E-2	-	Power & Communication Plan
P-1	-	Space Use Study
F-1	-	Furniture Plan
F-2	-	Rendered Furniture Plan

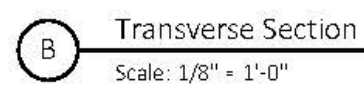
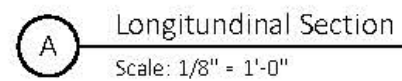
Furniture Specifications

Concept Statement

Finish Boards:

- Reception & Waiting Area
- Lounge & Conference
- Systems Furniture & Office Support
- Executive Offices

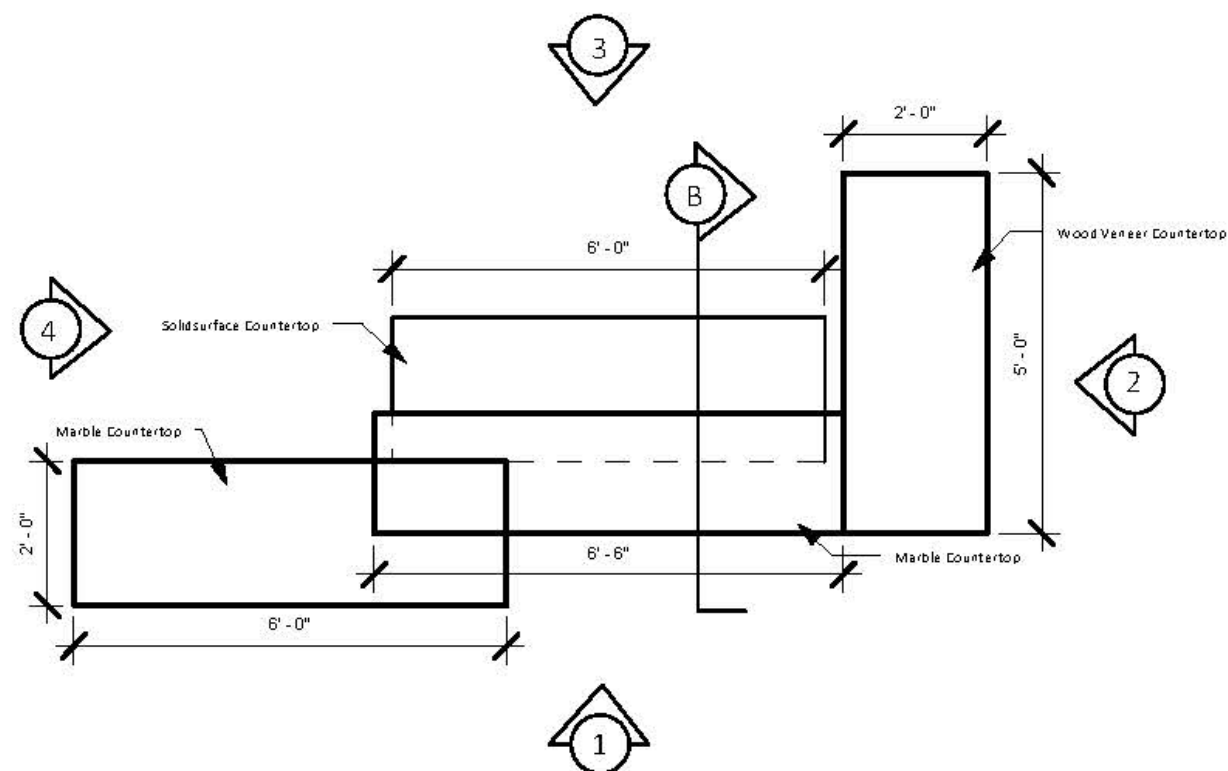




Fall 2017

## Building Sections

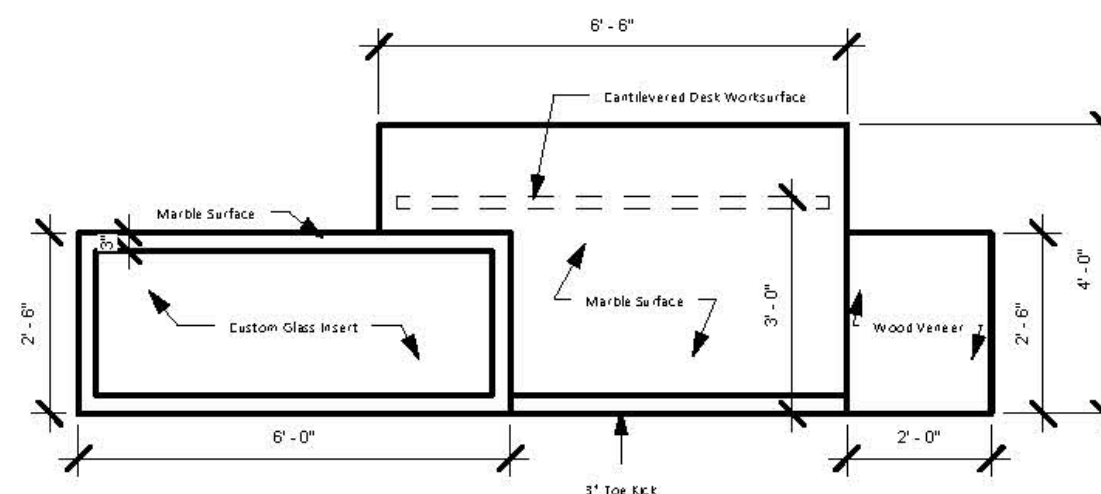
A-1



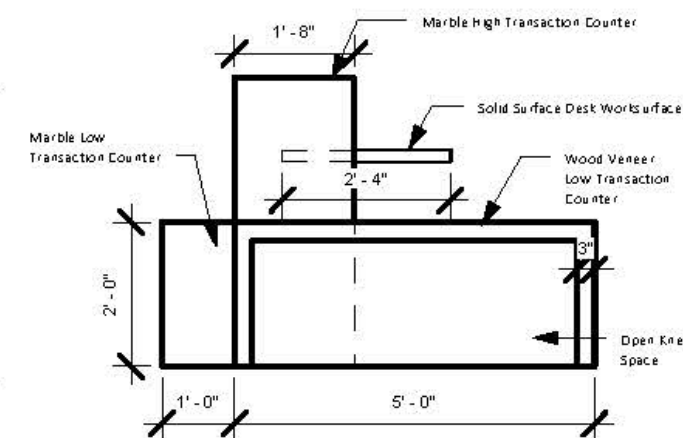
A Floor Plan: Reception Desk  
Scale: 3/8" = 1'-0"

## Notes:

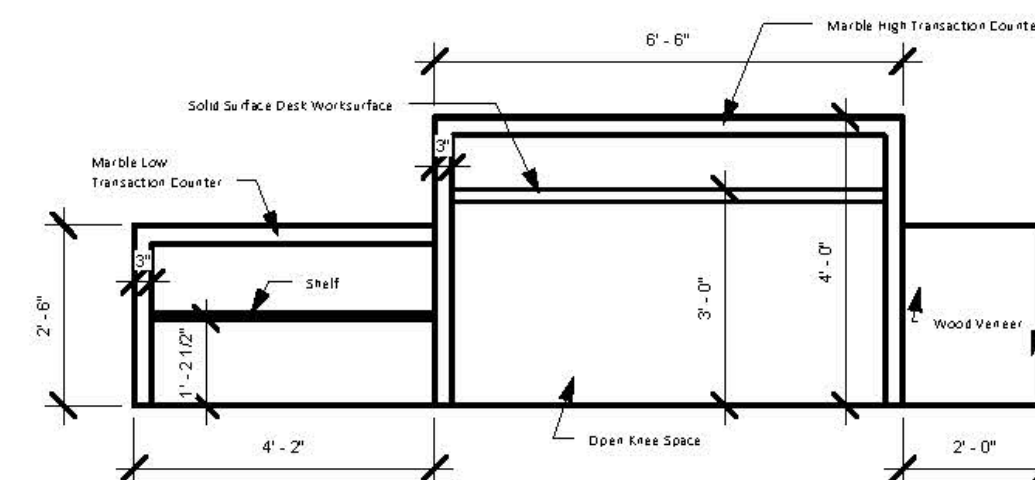
1. Worksurface surface to be Avontie Solidsurface Cardamom F1-8286 in Satin 1/2" with Waterfall Edge.
2. Transaction surface to be AG&M Brazilian Carrara Marble with Waterfall Edge.
3. Wood Veneer to be Wilsonart Standard HPL Finish in Stickley Oak 17003K-57.
4. Toe Kick to be Avonite Solidsurface Ice White F1-8064 in Satin 1/2".
5. Custom Glass Insert



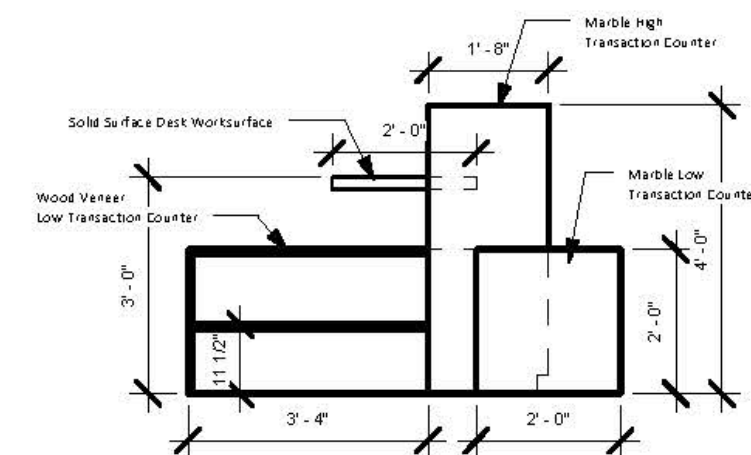
1 Front Elevation  
Scale: 3/8" = 1'-0"



2 Side Elevation  
Scale: 3/8" = 1'-0"



3 Rear Elevation  
Scale: 3/8" = 1'-0"



4 Side Elevation  
Scale: 3/8" = 1'-0"



Tobermory Chamber of Commerce

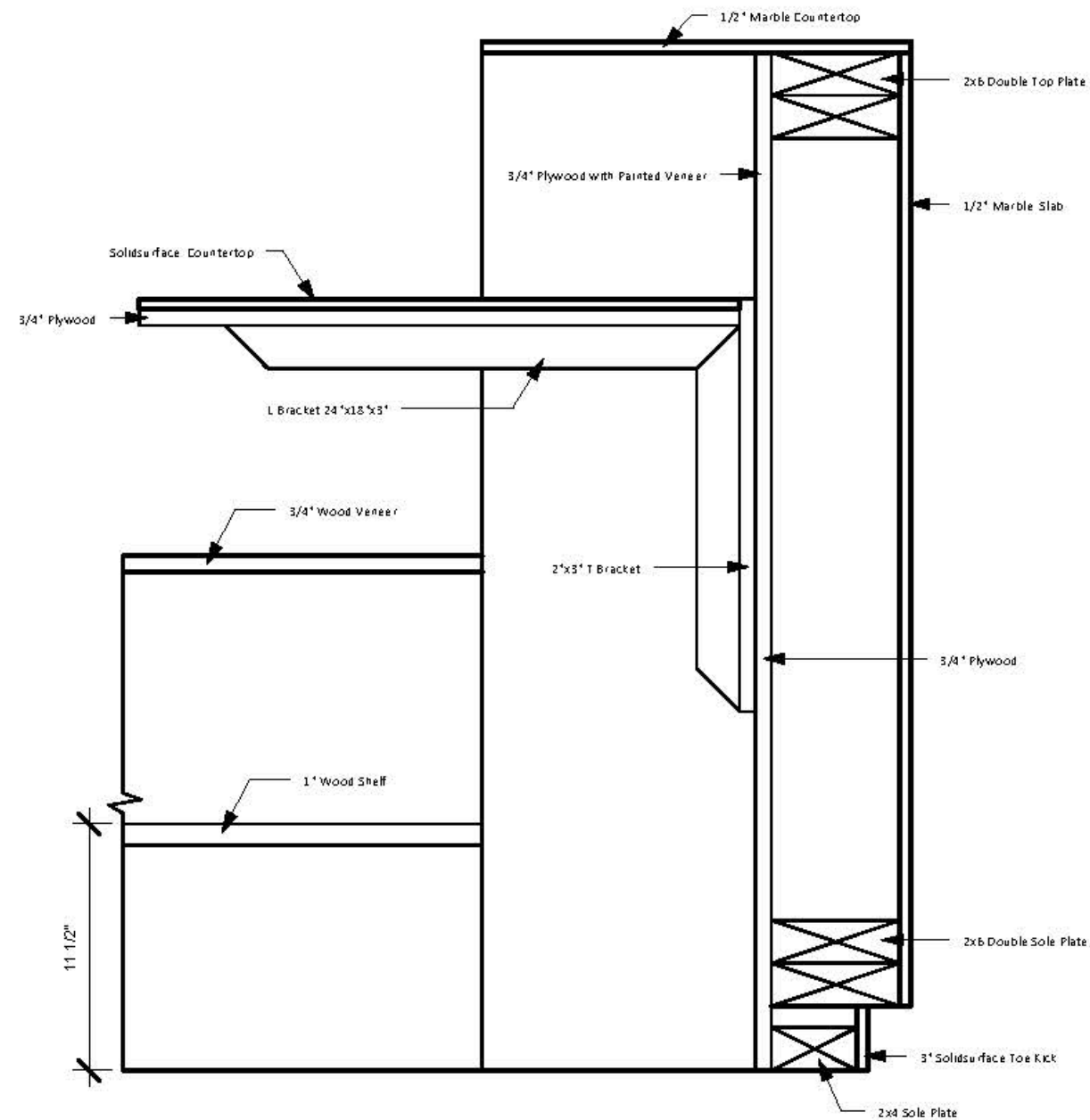
N.Webb

Fall 2017

Scale: 3/8" = 1'-0" IDES 4120

Reception Desk

A-2



B

Section

Scale: 1 1/2" = 1'-0"

## Notes:

1. Worksurface surface to be Avontie Solidsurface Cardamom F1-8286 in Satin 1/2" with Waterfall Edge.
2. Transaction surface to be AG&M Brazilian Carrara Marble with Waterfall Edge.
3. Wood Veneer to be Wilsonart Standard HPL Finish in Stickley Oak 17003K-57.
4. Toe Kick to be Avonite Solidsurface Ice White F1-8064 in Satin 1/2".
5. Custom Glass Insert



Tobermory Chamber of Commerce

N.Webb

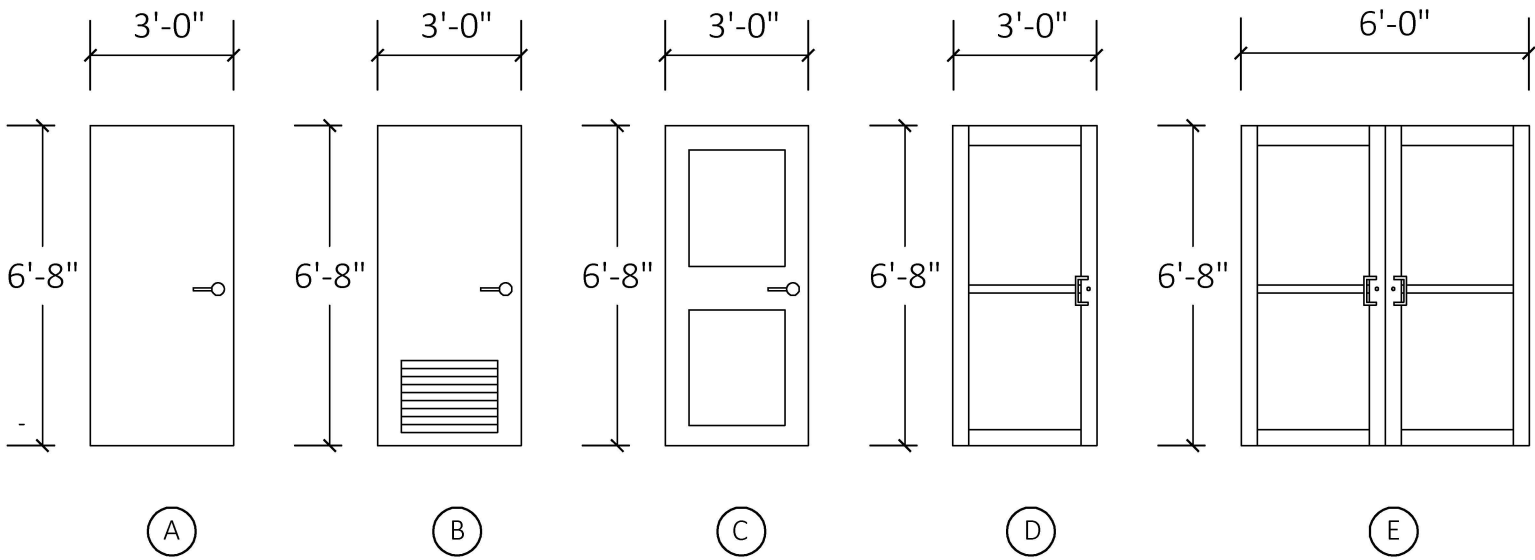
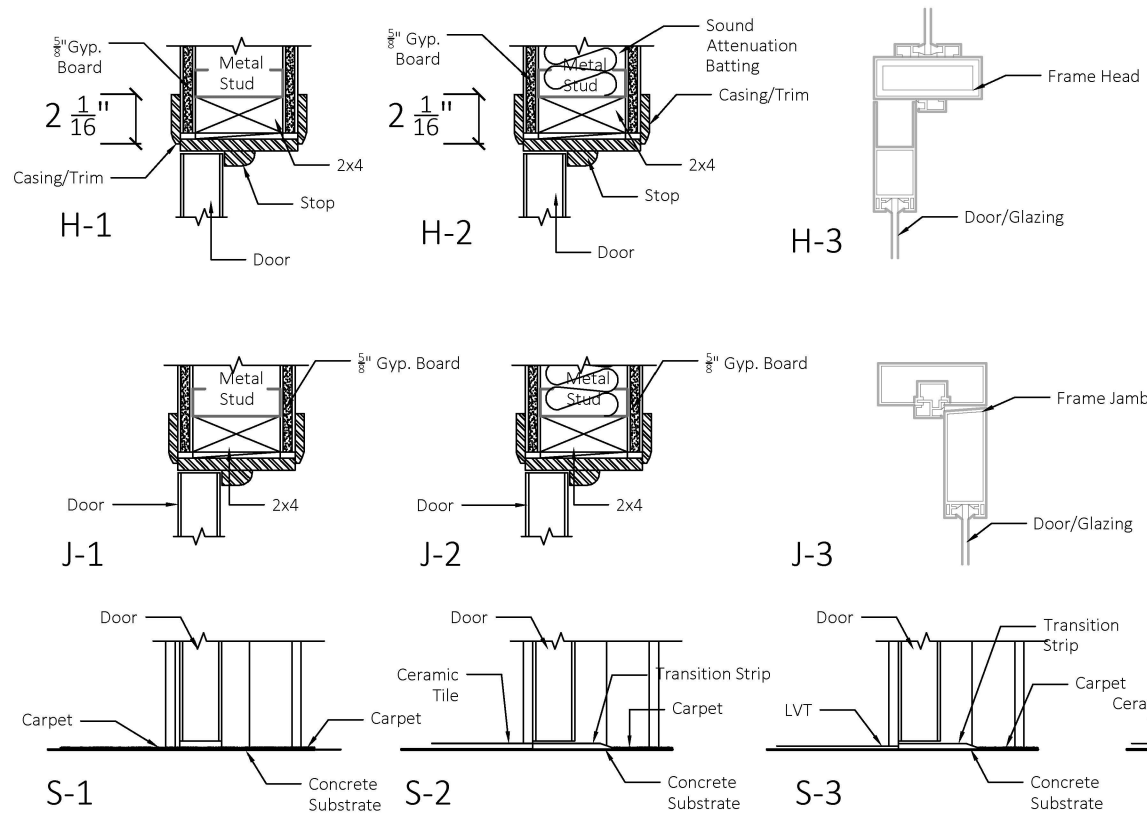
Fall 2017

Scale: 1 1/2" = 1'-0" IDES 4120

Reception Desk

A-3

DOOR SCHEDULE										
MARK	QTY.	SIZE W x H x T	CORE	MATERIAL	TYPE	MFG.& PRODUCT #	H	J	S	REMARKS
A	3	36" x 80" x 1 3/4"	Solid-Mineral Core	Wood	Flush	TruDoor	H-2	J-2	S-2	Rotary Natural Birch Finish
							H-2	J-2	S-4	
B	4	30" x 80" x 1 3/4"	Solid-Mineral Core	Wood/Metal	Louvered	TruDoor	H-1	J-1	S-4	Rotary Natural Birch Finish
							H-1	J-1	S-1	
B	3	36" x 80" x 1 3/4"	Solid-Mineral Core	Wood/Metal	Louvered	TruDoor	H-1	J-1	S-2	Rotary Natural Birch Finish
C	2	36" x 80" x 1 3/4"	Solid-Mineral Core	Wood/Glass	Sash	TruDoor	H-2	J-2	S-3	Rotary Natural Birch Finish
D	1	36" x 80" x 1 3/4"	Glass	Glass	Storefront	Tubelite Inc. 4500 Series	H-3	J-3	S-5	Tempered Glass & Aluminum Frame
E	1	72" x 80" x 1 3/4"	Glass	Glass	Storefront	Tubelite Inc. 4500 Series	H-3	J-3	S-5	Tempered Glass & Aluminum Frame



② Door Elevations  
SCALE: 1/4" = 1' - 0"

① Head - Jamb - Sill Details  
SCALE: 1 1/2" = 1' - 0"



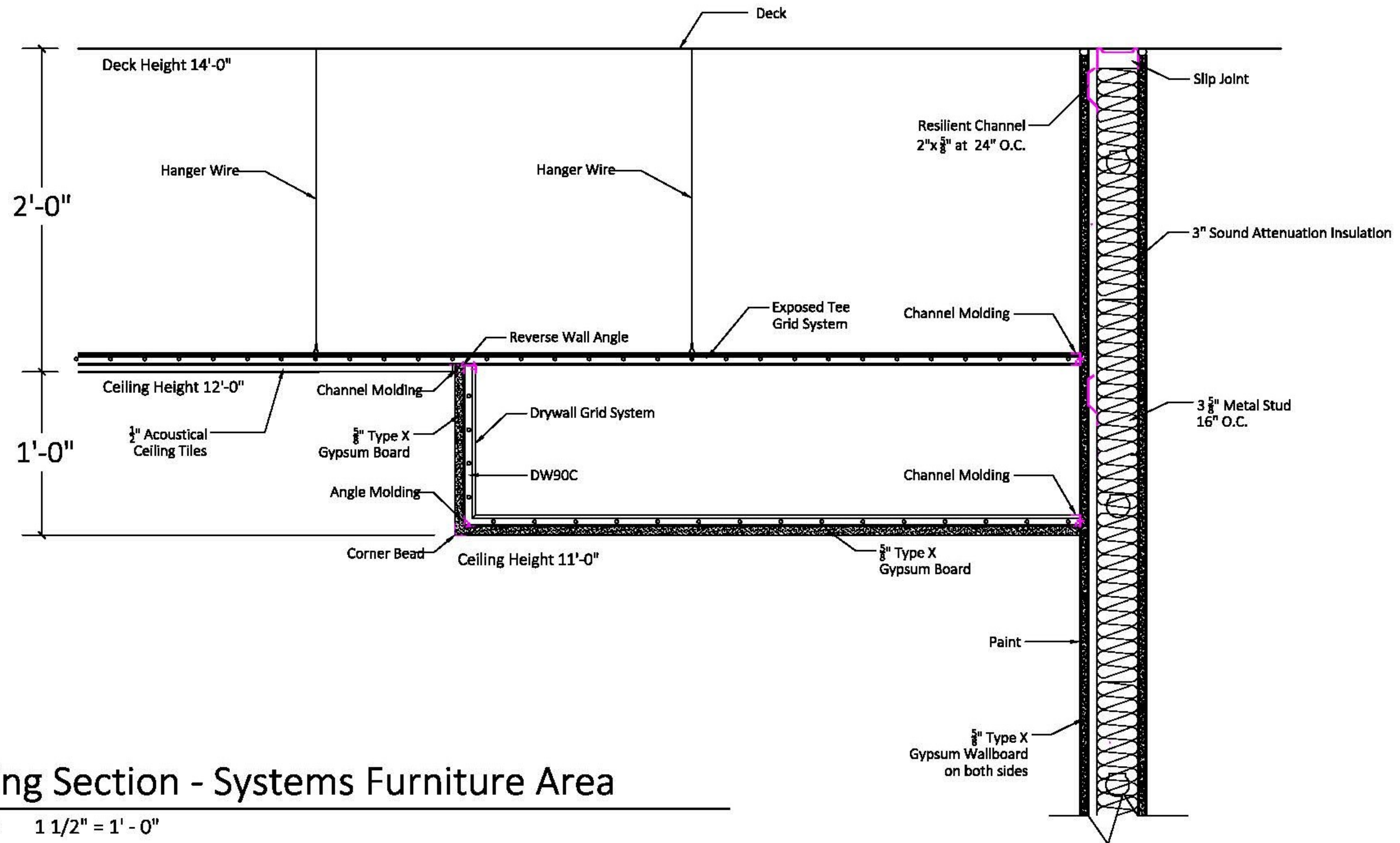
Tobermory Chamber of Commerce

N.Webb      Fall 2017  
Scale: Noted      IDES 4120

Door Schedule

A-4





**A** Ceiling Section - Systems Furniture Area

SCALE: 1 1/2" = 1' - 0"



Tobermory Chamber of Commerce

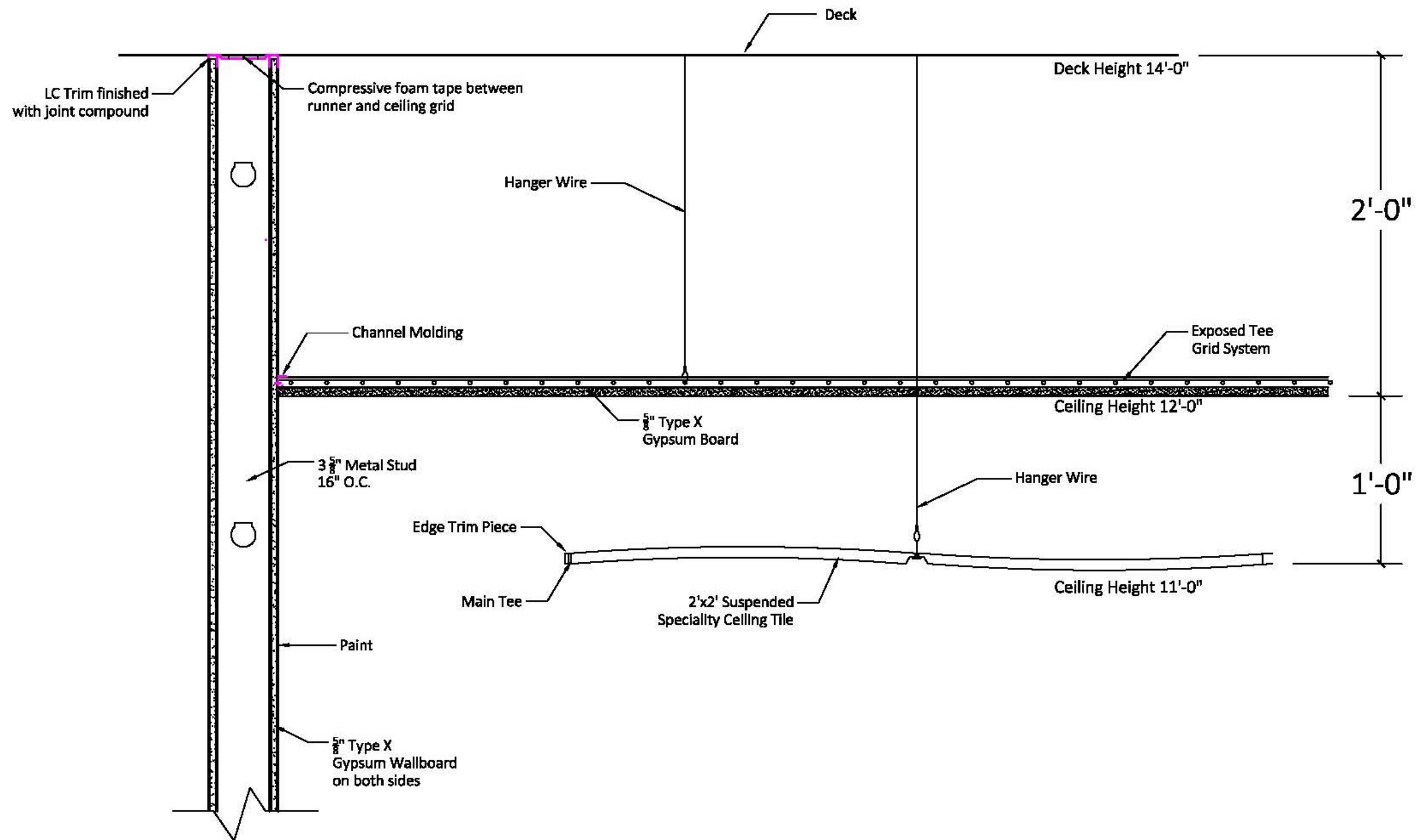
N. Webb

Fall 2017

Scale: 1 1/2"=1'-0" IDES 4120

Ceiling Sections

A-5



## B Ceiling Section - Waiting Area

SCALE: 1 1/2" = 1' - 0"



Tobermory Chamber of Commerce

N. Webb

Fall 2017

Scale: 1 1/2"=1'-0" IDES 4120

Ceiling Sections

A-6



Interior Finish Schedule														
Room/Area	Floor	Base	Walls				Ceiling	Ceiling Height	Doors	Trims	Counters	Cabinets	Remarks	
			North	South	East	West								
Entry/ Vestibule	CT	CTB	GLASS	GLASS	P-1	P-1	GYP	12'-0"	GLASS	P-5	NA	NA		
Waiting Area/Lounge	CT	CTB	WC-1 and P-1	P-1	P-1 and WC-1 and Glass Panel	P-1	GYP	12'-0"	W	P-5	CNT-1	CB-1	Glass Panel-Custom Layered Glass to match Reception Desk Insert	
	C-2	SCT					11'-0"							
Administrative Assistant	CT	CTB	WC-1	P-1	P-1	P-1	GYP	12'-0"	W	P-5	NA	NA	Custom Desk and Case good for Storage Glass Panel-Custom Layered Glass to match Reception Desk Insert Specialty Ceiling at 11'-0"	
							SCT	11'-0"						
Break Room	CT	CTB	P-2	P-2	P-1 and WP-2	P-2	ACT	11'-0"	W	P-5	CNT-2	CB-1	WP-2: 3FORM Panel	
Lounge	C-1	VCB	P-1	P-1	GLASS	P-5 and WP-1	GYP	11'-0"	W	P-5	NA	NA	WP-1: 3FORM Panel	
							SCT	10'-0"						
Conference Room	C-1	VCB	WC-2 and WP-1 and P-1	P-2	P-2	GLASS	GYP	11'-0"	GLASS	P-5	CNT-1	CB-1	WP-1: 3FORM Panel	
							SCT	12'-0"						
Janitor	CT	CTB	P-2	P-2	P-4	P-4	ACT	10'-0"	W	P-5	NA	NA		
Restrooms	CT	CTB	P-4	P-2	P-2	P-2	ACT	10'-0"	W	P-5	CNT-2	NA		
President/ Vice President Office	VT	VCB	WC-3	WC-3	WC-3	WC-3	ACT	11'-0"	W	P-5	NA	NA		
Work Room	CT	CTB	P-2	P-1	P-1 and WP-2	P-1	ACT	11'-0"	NA	P-5	CNT-2	CB-1	WP-2: 3FORM Panel	
Cubicles	C-1	VCB	P-1	P-1	P-3	P-3	GYP	11'-0"	NA	P-5	NA	NA		
							ACT	12'-0"						
												<b>Code Key:</b>		
												W/C: Wallcovering		I/C: Carpet
												W: Wood		P: Paint
												S: Stain		VCB: Vinyl Cove Baseboard
												CT: Ceramic Tile		CTB: Ceramic Tile Baseboard
												ACT: Acoustical Ceiling Tile		NA: Not Applicable
												VT: Vinyl Tile		CNT-1: Counter Top
												SCT: Specialty Ceiling Tile		WP: Wall Panel
												CB-1: Cabinet		

Interior Finish Specifications																			
Flooring																			
Carpet	Code	Manufacturer and Manf. Code	Pattern	Color	Description and Contents	Backing	Flame spread Test/Rating	Pattern Repeat	Total Weight	Size	Dye Method								
	C1	Interface B602- 126670250H	Net Effect One	Caplain- 102917	89% Total Recycled Content- Nylon, Preservative Efficacy: (AATCC 174 Parts 26.3) 99% Reduction/No Mold 7 Days, Non-directional Installation (ASTM E-2472) Complete Inhibition	GlasBac RE	Flooring Radiant Panel: ASTM E-648: Class I, Smoke Density: ASTM E-662 < 450, Flammability: DDC-FFI-70, Lightfastness (AATCC 16 - E) ≥ 4.0 @ 60 AFUs	NA	26 oz./yd2	19.69 in x 19.69 in, Pile Density: 6,039 oz./yd3	100% Solution Dye								
Resilient Floor	C2	FLOR - Code: 21-1466-01	Deep Impressions	Nimbus	66% Total Recycled Content- Nylon, directional Rug	Non- GlasBac Tile	Flooring Radiant Panel: ASTM E-648: Class I, Smoke Density: ASTM E-622, Lightfastness: AATCC-16-E	NA	32 oz./yd2	5x7, 7x9, 9x10, 10x12 Pile Density: 8,794 oz./yd3	100% Solution Dye								
	Code	Manufacturer and Manf. Code	Pattern	Color	Description and Contents	Size	Flame spread Test/Rating	Pattern Repeat											
Ceramic/ Porcelain Tile	Code	Manufacturer and Manf. Code	Pattern	Color	Description, Contents	Size	Flame spread Test/Rating	Pattern Repeat											
	CT	Pantheon- Code: 10-1502	Bluff	Sand-Matte Finish	COF Wet: 0.60 Matte- C1038, COF Dry: 0.75 Matte- C10828	36x36	Flooring Radiant Panel-ASTM E-648: Class I, Smoke Density: ASTM E-662- 450 or less, NSF/ANSI 332 Gold Level Certified, CAN/ULCS-102.2, Flame spread: 90, Smoke Development: 385	NA											
Paints/Stains	Code	Manufacturer	Color Name/ Number		Description, Contents	Finish	Vehicle/ Binder	UV											
	P-1	PPG	Cool/Slack PPG1002-3		Wonder-Pro: durable and washable, Low VOC and Low odor, MPI Approved Product-Categories 44 & 54	Eggshell	Interior Latex Paint	62											
	P-2	PPG	Gray Marble PPG1002-4		Wonder-Pro: durable and washable, Low VOC and Low odor, MPI Approved Product-Categories 44 & 54	Eggshell	Interior Latex Paint	46											
	P-3	PPG	Tapenade PPG11-32		Wonder-Pro: durable and washable, Low VOC and Low odor, MPI Approved Product-Categories 44 & 54	Eggshell	Interior Latex Paint	38											
	P-4	PPG	Antique Silver PPG1002-5		Wonder-Pro: durable and washable, Low VOC and Low odor, MPI Approved Product-Categories 44 & 54	Eggshell	Interior Latex Paint	27											
Wallcovering	Code	Manufacturer	Pattern	Colorway	Description, Contents	Type	Size	Pattern Repeat	Face Weight	Match	Flame spread Test and Rating	Match	Straight hang, random						
	WC-1	National Wallcovering- J.Josephson Inc	Cambah Silk	Royal Palace	Type II Fabric Backed Vinyl, Backing: Osnaburg	Type II	Width: 54 in	30" H x 54" W	20 oz.	Class A fire rated- ASTM E-84 Tunnel Test, Flame Spread: 25, Smoke Development: 45, Passes NFPA 266	Corner Burn Test								
	WP-1	3-Form	Varia Expressin- Random	Circuit Color Inverse	Rein	Scale B	48" x 96", 48" x 120"	Random	NA	ASTM D 1929: 716 F, NFPA 266: Pass, NA	ASTM E84: Flame Spread- 65								
	WP-2	3-Form	Varia Expressin	Pattern+Etch	Rein	Scale B	5 sq.ft. mini. X 60" or 120"	Linear	NA	ASTM D 1929: 716 F, NFPA 266: Pass, NA	ASTM E84: Flame Spread- 65								
	WC-2	National Wallcovering- J.Josephson Inc	Cambah Silk	Ramady	Type II Fabric Backed Vinyl, Backing: Osnaburg	Type II	Width: 54 in	30" H x 54" W	20 oz.	Class A fire rated- ASTM E-84 Tunnel Test, Flame Spread: 25, Smoke Development: 45, Passes NFPA 266	Corner Burn Test								
Counter Tops	Code	Manufacturer	Pattern	Colorway	Description														
	CNT-1	Metro Quartz by AG&M	Vogue-M4006	NA	Stain Resistant, Color Consistent, Easy to Clean, Mold and Mildew Resistant														
Wood Finishes	Code	Manufacturer and Manf. Code	Pattern	Description															
	W	ASSA ABLOY	Rotary Natural Birch	Door Finish															
Acoustical Ceiling Tile	Code	Manufacturer and Manf. Code	Pattern	Colorway	Description, Contents, Size	Flame spread Test and Rating	Grid System												
	ACT	Armstrong- 24-2956-1061	Fine Flakes- Factory-applied latex paint	White	High Acoustic Square Lay-in Ceiling Tile Material: Wet-formed mineral fiber No- Added Formaldehyde-free of formaldehyde based resins Light Reflectance: 0.85, NRC: 0.70, Insulation Value: Average R Factor is 1.5 (BTU Unit) 0.26 (Watts Unit)	ASTM E84 and CAN/ULC S102 surface burning characteristics. Flame Spread Index: 25 or less. Smoke Development Index 50 or less. ASTM E1264 Classification: Type III, Form 2, Pattern C5, Fire Class A	Square Lay-in, 24"x 48" x 3/4"												
Specialty Ceiling	Code	Manufacturer and Manf. Code	Pattern	Colorway	Description, Contents, Size	Flame spread Test and Rating	Grid System												
	SCT	USG- 206880/rev. 9-04	White Opaque	Flat White	TOPO 3-Dimensional System, Panels: Preformed and Material Thickness: 0.04", Suspension System: Extruded Aluminum, Edge-Trim System: Painted cold-rolled steel	Infill panels meet Class B requirements for flame spread and smoke developed as defined by ASTM E1264, NFPA and IBC (UBC) as tested in accordance with ASTM E84 and CAN/ULC S102 surface-burning characteristics. Light Transmission: 8%	Full 2x2' Modules												
Resilient/Ceramic Baseboards	Code	Manufacturer and Manf. Code	Pattern	Color	Description, Contents	Size													
	CTB	Pantheon	Bluff	Sand-Matte Finish	COF Wet: 0.60 Matte- C1038, COF Dry: 0.75 Matte- C10828	Cut base 3x12, 3x18, 3x24													
Vinyl Wall Base	Code	Manufacturer and Manf. Code	Pattern	Color	Description, Contents	Size													
	VCB	Roppe	Vinyl- Type TV	Black Brown-193	Vinyl Wall Base ASTM F1061: Resilient Wall Base- Type TV, Group 2, Style A&B, ASTM E648- Critical Radiant Flux: Class I, ASTM E662- Smoke Density: Passes 450, ASTM E84- Flammability: Class A	Height: 2.5", 4", 6" Length: 48" Sections, 120' Rolls													



Tobermory Chamber of Commerce

N.Webb

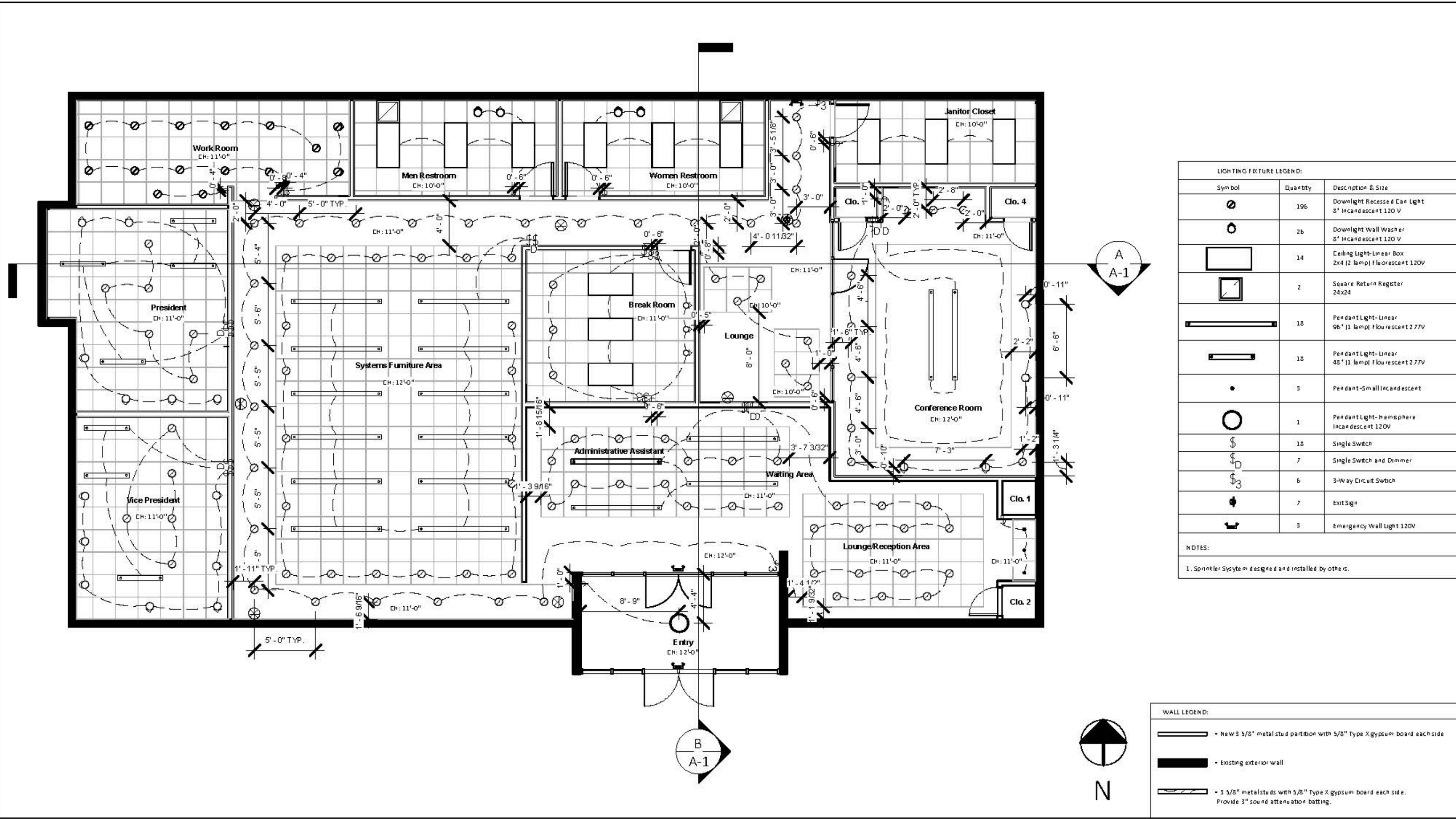
Fall 2017

Scale: NA

IDES 4120

Finish Schedule & Specs.

A-7



# Tobermory Chamber of Commerce

N.Webb

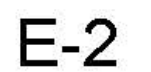
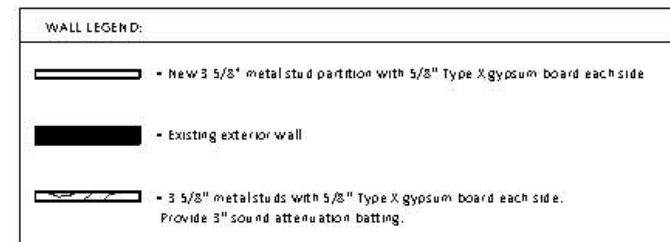
Fall 2017

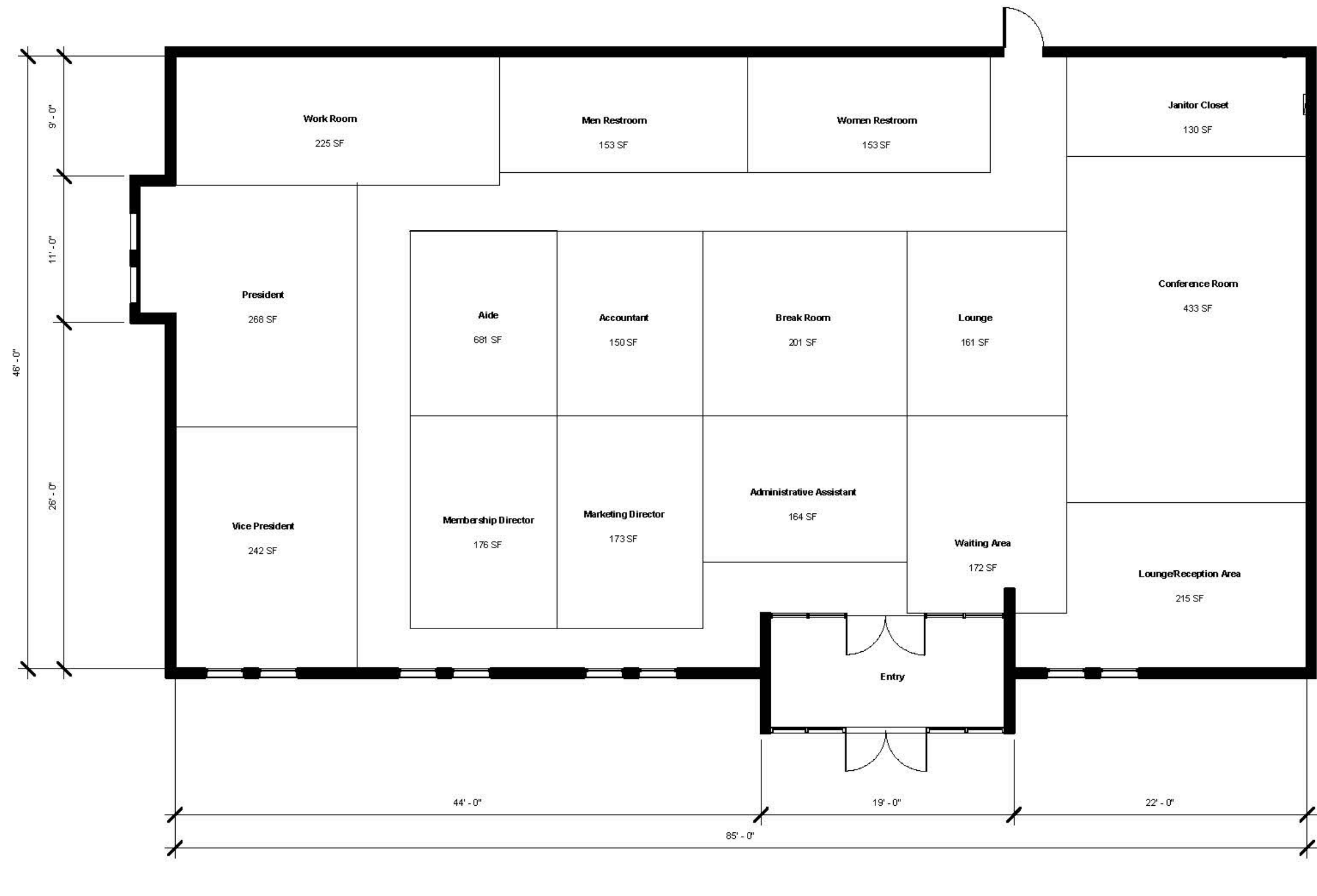
Scale: 1/8" = 1'-0"

IDES 4120

## Reflected Ceiling Plan

E-1





Tobermory Chamber of Commerce

N.Webb

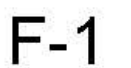
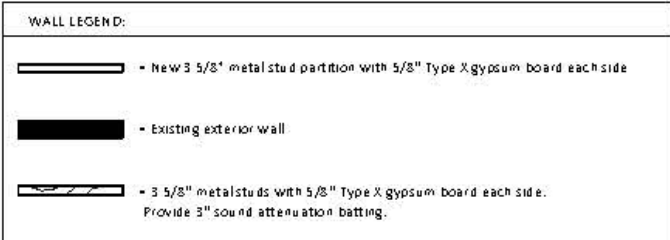
Fall 2017

Scale: 1/8" = 1'-0"

IDES 4120

Space Use Study

P-1







Tobermory Chamber of Commerce

N.Webb

Fall 2017

Scale: 1/8" = 1'-0" IDES 4120

Rendered Furniture Plan

F-2



# Free-Standing Furniture Specifications

## Manufacturer: FLEXFORM

Code	Item	Location	Code	Quantity	Description	Unit Cost	Total Cost
F1	Coffee Table	Lounge/Reception	COD 22570	1	Ginao Antonio Citterio-Tavolini Console Small Tables First Office- Wood Base Finish- "Sable on Cherry" Laminate Top- Wilsonart Laminate- 4924-38: White Carrara	\$1,634	\$1,634
F2	Side Table	Lounge/Reception	COD 20172	2	Gipsy Antonio Citterio-Tavolini Console Small Tables First Office- Wood Base Finish- "Sable on Cherry" Laminate Top- Wilsonart Laminate- 4924-38: White Carrara	\$1,694	\$1,694
							Total: \$3,328

## Manufacturer: Hightower

Code	Item	Location	Code	Quantity	Description	Unit Cost	Total Cost
HT1	Bar Height Seating	Lounge	FC13970	4	Four Cast Line High- Bar Stool Polyamide Seat, Upholstered Seat Pad COM-DesignTex, Pattern: Round Leaves, Color: Sweet Pea-3560-101, Contents: 100% Preconsumer Recycled Solution Dyed Nylon, Flammability: CA TB-117-2013 and NFPA 260-Class I Price: \$68/yd - Yardage: 1.5 yards(4 Chairs)	\$797	\$3,188
							Total: \$3,188



Free-Standing Furniture Specifications

Manufacturer: Nucraft															
Code	Item	Location	Code	Quantity	Description	Unit Cost	Total Cost								
N1	Monitor Table	Lounge	TETM-7236-42-V	1	Tesano Standing Height Conference Table with Built in Monitor and Power Rail (one simplex, once dual powered USB port) G25 Natural Walnut	\$7,907	\$7,907	N9	Credenza and Access Panel	President and Vice President Offices	MCB-2448-V and MC-AP-48	2	Merino- 24x48 Freestanding Credenza and Access Panel in G33 Mocha on Quartered Walnut	\$1,875	\$3,750
N2	Conference Table	Conference Room	TVT-14448-2-S-GP	1	Tavola Rectangular Table- Clear Anodized Aluminum WG White Back-Painted Glass	\$26,303	\$26,303	N10	Work surface Support-Credenza Right	President and Vice President Offices	LF-3024L-VS	2	Merino- 30x24 Work surface Support-Credenza Right in Whitecap ABS, G33 Mocha Walnut Finish	\$3,332	\$6,664
N3	Credenza	Conference Room	TVC-O-7229-GG	1	Tavola Open Credenza- Clear Anodized Aluminum WG White Back-Painted Glass	\$10,669	\$10,669	N11	Overhead-Stanchion Mounted	President and Vice President Offices	MCO-S-108D	1	Merino- 108x19 Overhead Stanchion Mounted	\$6,806	\$6,806
N4	Lectern	Conference Room	AVCL-2845-PA	1	Column Lectern with Slide out Shelf G35 Marron Walnut	\$7,097	\$7,097	N12	Glass Magnetic Board-Overhead	President and Vice President Offices	MCSG-108-21	1	Merino- 108 Glass Magnetic Board-Overhead	\$3,145	\$3,145
N5	Table	Break Room	TFF-7242-PA-OF-PCOF	1	Two4Six Soft Rectangle Table with Polished Chrome 45-58 Bright White Laminate R01 Whitecap ABS edge	\$5,083	\$5,083	N13	Credenza and Storage	Administrative Assistant	MCFC-24120-V, MC-AP-48, MCNR-LF-3624L-V, MCO-SH136-120D-G, MCSG-120-21, MCTW-1880R-V	1	Merino- 24x120 Freestanding Credenza 48 Access Panel-Credenza, 36x24 Work surface Support Credenza Left, 120" Overhead , 120" Glass Magnetic Board, 18x80 Tower Finishes: WG White Gloss Back-Painted Glass with Polished Chrome X-Base and G33 Mocha Quartered Walnut	\$24,088	\$24,088
N6	Pedestal	President and Vice President Offices	TFP-1836-V	2	Two4Six 18x36 Pedestal G33 Mocha on Quartered Walnut and Tiger Bronze Powder coat Metal	\$3,296	\$6,592								
N7	Desk	President and Vice President Offices	TFAD-4284-V-CV-LM	2	Two4Six Signature Desk-Height Adjustable with Chevron Veneer Pattern in G33 Mocha on Quartered Walnut and Custom Tiger Bronze Powdercoat Metal and Modesty Panel	\$10,198	\$20,396								
N8	Bookcase	President and Vice President Offices	TFLW-6L-V-BP	2	Two4Six Louvered Wall with Back-Painted Glass in G33 Mocha and WG white back-painted glass shelves	\$6,695	\$13,390								
															\$141,890.00



# Free-Standing Furniture Specifications

Manufacturer: Herman Miller

Code	Item	Location	Code	Quantity	Description	Unit Cost	Total Cost
H1	Sofa	Lounge/Reception	SBRA-72-OUG	2	Rolled Arm Sofa- 3 seater sofa Matte Sheen Walnut Finish COM- DesignTex, Pattern: Pivot, Color: Powdered Sugar(3374-101), Contents: 100% Polyurethane, Flammability: CA TB-117-2013 and NFPA 260-Class I Price: \$39.00/yard- Yardage: 9 yards per chair	\$4,635	\$9,270
H2	Club Chair	Lounge/Reception	SBRA-43-OUG	3	Rolled Arm Club Chair- Matte Sheen Walnut Finish COM- DesignTex, Pattern: Luster, Color: Pool, Contents: 100% Polyurethane, Flammability: CA TB-117-2013 and NFPA 260-Class I Price: \$47.00/yard- Yardage: 6 yards per chair	\$3,337	\$10,011
H3	Sofa	President's Office	ES110-SQ-CD	2	Eames Sofa- 2-seater with oiled walnut back finish and polished aluminum COM- DesignTex, Pattern: Faux Sure, Color: Snow 2880-101, Contents: 100% Nylon Microfiber, NFPA 260- Class I, CA 117-Passes Price: \$52/yard - Yardage: 4.5 yards per sofa	\$9,977	\$19,954
H4	Guest Chair	Cubicles	DWSRPBKOUOUE9	6	Eames Upholstered Molded Side Chair- with wire base, upholstered seat pad, black base finish, walnut finish, standard glide with felt bottom COM- National, Pattern: SilverTex, Color: Basil 41301, Contents:100% Polyester, Passes CA 117, NFPA 260 Class I Price: \$52/yard - Yardage: 1 yard per chair	\$915	\$5,490
H5	Desk Chair	Cubicles and Admin.	AERIB23DWALPVPRNCD VPDC1	5	Aeron Ergonomic Task Chair- Size B, Standard Height Range, Tilt Limiter and Seat Angle, Fully Adjustable Arms, Adjustable Posture fit SL, Caster: 2.5" braking caster, black yoke, hard floors or carpet with quiet roll technology Frame: Mineral Finish, Chassis: Satin Aluminum Finish, Base: Dark Mineral Finish, Seat Upholstery: Mineral 8z Pellicle Suspension Material, Arm pads: Dark Mineral Leather	\$1,538	\$7,690

\$52,415.00



# Free-Standing Furniture Specifications

Manufacturer: Davis Furniture															
Code	Item	Location	Code	Quantity	Description	Unit Cost	Total Cost								
D1	Lounge Chairs	Lounge	GL-300	2	Ginkgo Lounge Chairs- Mid Back, Memory Return Swivel Base, Fully Upholstered COM- KnollTextiles, Pattern: Smart, Color: Tar- KI1268/20, Contents: Face- Polyurethane 65% and Backing-Polyester 35%, Flame Resistance: NFPA 260-Class I Price: \$56/yard - Yardage: 3 yards per chair	\$2,394	\$4,788	D7	Lounge Chair	Vice President Office	GL-3000	1	GINKGO Lounge Chair- High Back with Memory Return Swivel fully upholstered COM: DesignTex, Pattern: Gamut, Color: Sky 3468-401, Contents:100% Postconsumer Recycled Polyester, ASTM E84: Unadhered Class A, CA 117- Pass, NFPA 260-Pass Price: \$20/yard - Yardage: 4.25 per chair	\$2,737	\$2,737
D2	Occasional Tables	Lounge	VT-8001	1	Valet Trilobe Tier Fixed Table Top- White Acrylic	\$938	\$938	D8	Lounge Chair Footrest	Vice President Office	GL-4000	1	GINKGO Lounge Chair Footrest COM: DesignTex, Pattern: Gamut, Color: Sky 3468-401, Contents:100% Postconsumer Recycled Polyester, ASTM E84: Unadhered Class A, CA 117- Pass, NFPA 260-Pass Price: \$20/yard - Yardage: 1.25 per chair	\$704	\$704
D3	Conference Chair	Conference Room, Work Room, President and Vice President	LT-20000	16	LINGQ Chair Series- Fully Upholstered 5 star Caster Base LQ-MGCA-Mid Grey Caster LQ_MGAR-Mid Grey Arm Cap COM- Maharam, Pattern: Pitch 466186, Color: 001 Alpine, Content: 100% Vinyl, Finish: Antimicrobial Stain and Ink Resistant, Backing: Polyester, Flame: CA 117-2013- Pass, NFPA 260 Pass, Passes all Standards Price: \$37/yard- Yardage: 3/4 yard per chair	\$15,244.00	\$23,058	D9	Executive Guest Chair	President and Vice President Offices	EXO 1315	4	EXO Chair Series- Mid Back, Five Star Glide Base with Arms COM-National, Pattern: SilverTex, Color: Carbon 41307, Contents:100% Vinyl, Passes CA 117, NFPA 260 Class I Price: \$52/yard - Yardage: 1.75 yard per chair	\$1,968	\$7,872
				8	COM: National, Pattern: Davenport- Grade L7 Leather, Color: Olive, Contents: Top Grain Leather, Passes CA 117, NFPA 260 Class I Price: \$69/yard- Yardage: 3/4 yard per chair	\$7,814		D10	Executive Task Chair	President and Vice President Offices	Cloud 9	2	CLOUD Chair Series- High Back, Five Star Caster Base, Swivel/Tilt/Height Adjustable COM: Maharam, Pattern: Lariat 440401, Color: 026 Snow, Contents: 100% Vinyl, Backing: Polyester, Flame: CA 117-2013- Pass, NFPA 260 Pass Price: \$34.50/yard - Yardage: 3 yard per chair	\$2,369	\$4,737
D4	Side Chair	Conference Room and Break Room	KI-7010	14	Kirkos Chair Series- G35 Marron Walnut, Chrome base Finish	\$908	\$12,712								
D5	Square Table	Work Room	VR-1236-S	1	VEER Table Series 36" Square Top Laminate Top- WilsonArt: White Carrara 4924-38 with birch plywood edge with clear varnish and chrome base	\$1,172	\$1,172								\$61,830
D6	Small Conference Table	President and Vice President Offices	MZ-1048-R	2	MEZ Table Series- 48" Round Top with Metro Quartz Top- Bianco Marina M3004	\$1,556	\$3,112								



# Free-Standing Furniture Specifications

Manufacturer: National Office Furniture

Code	Item	Location	Code	Quantity	Description	Unit Cost	Total Cost
O1	Coffee Table	President Office	82N3636MGSQ	1	Staccato Occasional Table- Soft Square Coffee Table with Glass Top	\$1,691	\$1,691
O2	End Table	Vice President Office	82N2424MGSQ	1	Staccato Occasional Table-Soft Square End Table with Glass Top	\$1,437	\$1,437
O3	Glass Coffee Table Top	President Office	10N3636SSQG	1	Universal Glass Kits- Soft Square Coffee Table Top	\$1,194	\$1,194
O4	Glass End Table Top	Vice President Office	10N2424SSQG	1	Universal Glass Kits- Soft Square End Table Top	\$796	\$796

\$5,118

Grand Total: 267,978





# Concept Statement

---

The 2017 Chamber of Commerce for the city of Tobermory, Ontario will include the renovation of a 3,987 sq.ft. building. The president of the Chamber of Commerce, Mr. William Lavoie, will be the primary client for the renovation of this project. Mr. Lavoie has requested a modified office plan that includes wall offices and spaces, as well as open cubicles for secondary staff. The Chamber of Commerce will include a waiting area, break room, conference room, work room, men and women's accessible restrooms, and a janitor closet. The Chamber will accommodate offices and cubicles for the president, vice president, administrative assistant, membership director, marketing director, accountant, and aide. The building is existing therefore exterior walls, utilities, and exits have been predetermined. However, an additional exit will be provided to allow for better means of egress.

The Chamber of Commerce will be relocated to the downtown area of Tobermory, Ontario, which is a lakeside town with beautiful views of Lake Hudson. I will use this as an inspiration to create a modern design for the interior, which picks up on the blue and blue-green hues from the grotto and bay. The color scheme will be achromatic with accents of blue and green. This color scheme will be used throughout the space to convey unity and harmony. Bold colors of blue or green will serve as the accent for a particular space, with its analogous accents subtly seen in upholstery or wall panels. I will use the existing windows to allow for daylight views in every space that promote worker productivity. To distinguish status, the president and vice president will have enclosed offices, while the other employees will have systems furniture. By placing the enclosed spaces on the perimeter of the building, will allow for cubicles and shared spaces to be open and enjoy daylight views. Texture will be used and seen in the wallcovering, furniture upholstery, and systems furniture panels. An interesting art wall and custom reception desk will create emphasis for visitors when they first enter the Chamber and will indicate where they need to ask for information. The desired atmosphere for the Chamber is dignified, relaxed, and engaging.

The ceiling, wall, and floor planes will feature interesting patterns and textures that will add visual interest and contribute to the overall design of the Chamber of Commerce. The ceiling will have varying ceiling heights, drop down soffits, and suspended ceiling tiles to enhance the spaces volume and highlight specific areas or furniture groupings. A curvilinear ceiling tile will serve as the speciality ceiling tiles that will add visual interest to the reception, lounge, and conference areas. Pattern and texture is also evident in upholstery, wallcovering, and wall panels that will be used in various spaces. Curved and organic shapes and lines will mainly be seen in accent fabrics and upholstery. While linear and geometric shapes are seen in the wallcovering and wall panels that provide emphasis for the reception, lounge, conference, executive offices, and work support areas.







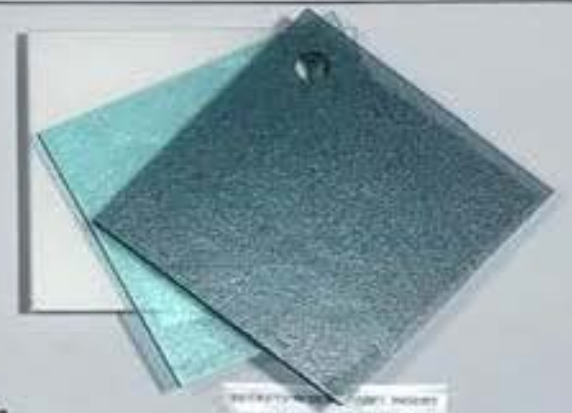
W-1 SOFA



ACCENT PILLOW



Chamber of Commerce



RECEPTION DESK, WOOD, GREEN



RECEPTION CHAIR, WOOD, GREEN



CW-1



N-10 CREDENZA/STORAGE



C-2 ACCENT RUG



W-2 BLUE CHAIR



CB-1 WOOD FRESH



F-1 COFFEE TABLE



F-1 & F-2 LAMINATE TOP



F-2 SEE TABLE



CT-1











P-4  
ACCENT

P-5  
ACCENT

P-6  
WALL

P-8 TRIM PART

NC-4 EXECUTIVE OFFICES

SOLAR WOODS FABRIC

ACT- AMBROSINO COLUMBIA

D-2 FABRIC

D-4 CONFERENCE CHAIR

N-6 BOOKCASE

N-7 DESK

N-8 PECTAL

N-9 CREDENZA

D-10 TASK CHAIR

ENT-2 TABLE TOP

D-4 CONFERENCE TABLE

ACCENT PILLOW

D-7 VP LOUNGE CHAIR

D-8 GUEST CHAIR

N-3 PRESIDENT'S OFFICE

N-5 FABRIC

D-5-3 COFFEE & END TABLES

VT- FLOORING

VIS- ALPINE BARRICADE