



**New angles**  
**Dual exhibit offers**  
**2 artists' perspectives**  
 see page 6

**Inside this edition:**  
**Collaborating for a community, page 3**  
**Employee Benefits Fair Oct. 14, page 6**  
**TV's 'Judge Alex' set to lecture, page 7**

Saturday  
 Oct. 10, 2009

Prescription  
 Take Back  
 Event

see page 7

a biweekly publication for the Middle Tennessee State University community

Oct. 5, 2009 • Vol. 18/No. 07

# the RECORD

## MTSU ready to help students, staff stay healthy

### Seasonal flu shots given, H1N1 vaccines en route

by Gina K. Logue  
 gklogue@mtsu.edu

Between the scientifically perplexing nature of the H1N1 influenza pandemic and the vicissitudes of government bureaucracy in preparing to administer the vaccine, the key word for the illness is not "swine"—a misnomer—but "mutation."

Everything about H1N1, including the vaccination schedule, has the potential to change shape.

MTSU Health Services personnel stand ready to play whatever roles they can to protect students, faculty and staff from the H1N1 virus and to treat those affected by it. At press time, MTSU had requested 7,000 doses of H1N1 vaccine. Dr. Eric Clark, Health Services physician, says the delivery date of the first shipments likely will be mid-

October.

Clark says applications for vaccination sites have been distributed and most sites have been assigned. He says the sites likely will get the vaccine in multiple shipments over time.

The U.S. Centers for Disease Control and Prevention have defined children and young adults, pregnant women, caregivers for children younger than six months of age, and health care providers as the high-risk groups that should get the vaccine first. Younger children might



See 'Flu' page 5

### Full-service pharmacy is key for convenience

by Tom Tozer  
 ttozer@mtsu.edu

The MTSU Campus Pharmacy, which features a drive-through window on the southwest corner of the Student Health, Wellness and Recreation Center, offers all the services of a retail drug store, except that you can go for a hearty walk to the

See 'Pharmacy' page 5

### IT partnership means \$600K to recruit, train

by Randy Weiler  
 jweiler@mtsu.edu

MTSU is involved in a \$600,000 National Science Foundation-funded partnership to strengthen the information technology work force, said Dr. Tom Cheatham, dean of the College of Basic and Applied Sciences.

Joining MTSU in the collaboration are Nashville State

See 'Partnership' page 2

### Leading the pack



**MAKING THE ROUNDS**—Student driver Jordan Wolpert, center right, guides the MTSU Blue Raider Baja Team's new vehicle around the course in Burlington, Wis., at the recent Baja SAE Wisconsin competition, trailed by competitors from the University of Virginia, University of Windsor and Northern Arizona University. The MTSU team designed, built, tested, promoted and raced a vehicle within the limits of the Society of Automotive Engineers' rules while also generating financial support for their project and managing their educational priorities. To learn how MTSU fared, see page 2.

photo submitted

## 25,000-plus? Fall '09 enrollment 'terrific,' officials say

by Randy Weiler  
 jweiler@mtsu.edu

MTSU administrators anticipated enrollment surpassing 24,000 for the first time in fall 2009. They never dreamed the combined undergraduate and graduate head count would break the 25,000 barrier—and then some.

Enrollment Services officials recently submitted a record 25,188 student total to the Tennessee Board of Regents.

In 2008, MTSU's then-record enrollment was 23,872 students. MTSU has 1,316 additional students registered for classes this fall—a 5.5 percent increase—compared to fall '08.

"Certainly, unemployment and the economy are driving many people back into the classroom for retraining and to gain the education needed for a change in employment," said Dr. Deb Sells, vice president for student affairs and vice provost for enrollment services.

"Our head count rose by more than 1,300 students. Memphis's head

count increased by a few more than 1,200 students. The remaining four-year schools each grew in head count by somewhere between approximately 60 and 800 students. The quality of the academic programs at MTSU, coupled with the personal attention and exceptional student service

See 'Enrollment' page 5

### IN BRIEF

#### CAREER FAIR SET FOR OCT. 7

The Career Development Center's annual Fall Career Fair will be held from 11 a.m. to 3 p.m. Wednesday, Oct. 7, on the track

level of Murphy Center, event organizers said. At press time, 89 vendors had agreed to send representatives to staff booths and discuss career opportunities with MTSU students. For more information about the event, call 615-898-2500.



www.mtsunews.com

PERMIT NO. 169  
 MURFREESBORO TN  
 U.S. POSTAGE PAID  
 ORGANIZATION  
 NONPROFIT



# Third Reich revisited: An African-American perspective

by Randolph Jackson  
news@mtsu.edu

Where does one start? The beginning? Some would say it began with reading *The Diary of Anne Frank* all those years ago. It was required reading when I was in elementary school (fifth grade, actually). That was the fall of 1970, but let us flash forward to fall 1980—to be more exact, October 1980 at Wiley Barracks in Neu Ulm, West Germany. A day trip to Dachau would forever have an indelible impact on me.

Dachau, located about 10 miles northwest of Munich, was the first concentration camp and became the prototype for all others. Opened in March 1933 as Konzentrationslager Dachau, it was the first camp for political prisoners opened by the National Social Party, the Nazis. From that time until its liberation by American forces in April 1945, more than 190,000 people died or were exterminated there. I cannot say if this place is haunted, but I certainly felt the presence of the souls that were lost there. There also was an overwhelming stench of evil that permeated my entire being.

On the ride back to Neu Ulm, my mind tried to process everything I had learned in a few short hours. Yes, I had read about the Holocaust in school, but now it had become less abstract. To be at the scene of such atrocities made it real. Anti-Semitism is something I had never understood; Jews were simply people who had religious beliefs that differed from mine. More importantly, I had never understood the hate directed at my people, African-Americans.

Over the next few years I would reflect on that October afternoon. While working as an insurance salesman in the 1980s, I had a client named Charlotte. In the course of doing business one morning, I noticed a tattoo on her forearm—a tattoo that marked her as one who had been interned at a concentration camp. Seeing that filled me with an insatiable desire to know more. Here was a witness to history sitting across the desk. Charlotte had survived, and I had to hear her testimony. As we concluded our business, I broached the subject of her tattoo.



Jackson

The moment seemed suspended in time before she replied. In her eyes there was a mixture of sadness at remembering, intermingled with her own curiosity. Why would a Gentile such as myself want to know her story? Briefly I related my visit to Dachau several years before, and she became agitated. Charlotte was there when the camp became

liberated. I was awestruck! I would meet with Charlotte and her husband two weeks later. They invited me over to dinner, and afterward they recounted their stories of despair and determination, love and survival. Leaving them, I was inspired, and I had to know more.

Flash forward to March 1999. I took a trip to Long Island, N.Y., to present my first paper on genocide. It was here that I became involved with the Annual Scholars' Conference on the Holocaust

& the Churches. Being a part of this group has broadened my sphere of knowledge in not only the Holocaust but also genocide research in general. The 20th century was rife with genocide prior to World War II but also in the postwar era. Witness the current situation in Darfur, and let us not forget recent genocides in central Africa and Eastern Europe.

The topic of my paper to be presented at this month's conference at MTSU is the treatment of African-American prisoners of war under the Nazis. My interest in this topic was piqued by a question I was asked at a conference at St. Joseph's University in Philadelphia. While checking in, the desk clerk asked, "Why are you here? You aren't a Jew." I informed this African-American male that genocide is not confined to just one group of people. His question did pique my interest, so here I am.

I am looking forward to meeting new scholars and renewing old acquaintances at Middle Tennessee this month.

*Randolph Jackson, an independent scholar residing in Dubuque, Iowa, will present his research, "African-American POWs: Forgotten Voices of the Holocaust," during the Ninth Biennial MTSU Holocaust Studies Conference on Thursday, Oct. 22, during "Session III: America and the Holocaust" from 11:20 a.m. to 12:45 p.m. in the James Union Building. Jackson currently is working on his first book, which will be published in 2010. For more about the conference, visit [www.mtsu.edu/news.com](http://www.mtsu.edu/news.com) and click the "2009 Holocaust Studies Conference" link.*

## Partnership

from page 1

Community College and Huntsville-based Alabama A&M University from higher education and Mind2Marketplace and the Nashville Technology Council from the private sector.

The partnership intends to recruit and retain computing students to IT, which has seen a 50 percent decline in computer-science enrollments since 2000, Cheatham said.

"We're real excited about this," said Cheatham, who was a chair and faculty member in computer science before moving into higher-ed administration. "It's a chance to recruit more students into IT fields."

U.S. Rep. Bart Gordon was instrumental in helping the partnership land the NSF grant.

"The Internet, computers and cell phones will continue to change how the United States does business inside our borders and around the world," Gordon said. "To maintain our leadership in developing new technologies, it is essential that we encourage stu-

dents to pursue majors in computer science and information technology.

"This NSF grant will allow MTSU to provide high-school students with the hands-on experience needed to develop and increase interest in the areas of information technology. I remain committed to helping MTSU obtain additional funds to carry out similar programs."

The grant calls for MTSU, Nashville State and Alabama A&M to recruit prospective IT students from their respective school systems, Cheatham said. High-school students will be exposed to computing through summer camps on robotics, Alice and multimedia programming, and college students will be engaged in real-world computing problems to help retention.

Computer science professors Drs. Cin Li and Zhijiang Dong are co-principal investigators in the project for MTSU.

# Blue Raider Baja Team makes splash in national event

by Dr. Saeed Foroudastan  
sforouda@mtsu.edu

The automotive industry may not be doing as well nationally as it would like, but MTSU student car-builders showed real improvement at the 2009 Baja SAE competition in Burlington, Wis.

Students worked diligently on a project that incorporated skills needed in the workforce: project management, decision-making, leadership, critical analysis and problem-solving.

Baja SAE, organized by the Society of Automotive Engineers, is

an international collegiate engineering competition with the goal of building a single-seat off-road recreational vehicle that is safe, fun to drive and easy to maintain and has the ability to be mass-produced and sold to the public. The vehicle must survive severe rough-terrain punishment as student teams compete to have their designs accepted for manufacture by a fictitious firm.

Three North American SAE Mini-Baja preliminary competitions (East, West and Midwest) each offer different challenges. MTSU's team participated in the East competition in

## Clean Energy Fee deadline is Oct. 9

MTSU's Clean Energy Fee Committee, established after students voted in fall 2006 to put in place an \$8-per-semester Clean Energy Fee, is once again soliciting applications for funds generated by the fee. The deadline to submit applications is Friday, Oct. 9.

The following guidelines may be used to determine whether a project is eligible for support from the Sustainable Campus Fund.

Projects and proposals should focus primarily on renewable energy, energy conservation and efficiency, alternative fuels and/or sustainable design.

Eligible spending may include:

- on-site generation projects that utilize and publicize renewable energy technologies, such as solar array displays on campus;
- opportunities to gain additional funding or offset costs

through rebate programs, such as the Generation Partners program provided by Tennessee Valley Authority and Murfreesboro Electric Department;

- studies that analyze energy-efficiency initiatives; and
- research grants, as well as academic programs for educational, training and research purposes, to help develop awareness of energy use, consumption and conservation to be awarded within the MTSU community.

To submit a Clean Energy Fee funding proposal, please visit the Student Government Association Web site at [www.mtsu.edu/~sga](http://www.mtsu.edu/~sga) and click on the "Clean Energy Fee" link on the right side of the page. Direct any questions to Dr. Gene Fitch, associate vice president for student affairs and dean of student life, at 615-898-2750 or [gfitc@mtsu.edu](mailto:gfitc@mtsu.edu).

Atlanta and learned from its mistakes to come back strong for the West competition in Wisconsin, improving its total laps completed from nine to 23.

This was the Blue Raider Baja Team's fourth national competition, and this year they built a brand-new vehicle. The team's achievements included ranking in the top 40 percent overall out of 124 teams, placing 30th in the Sled Pull Event and placing sixth in the Mud Bog Event.

The Blue Raider Baja team included Steven Childers, David O'Brien, Josh Cantrell, Jordan Wolpert, Bryan Armstrong, Micah Barnett and Sherry

Harner. I am the team's faculty adviser, and I would like to thank Rick Taylor for his assistance in the Department of Engineering Technology's machine shop and support of the team. I would also like to give a special thanks to Paul Martin III and Sherry Harner for their support as well as Jacqueline Victory from the Student Leadership and Service Office. Finally, I would like to thank Dr. Walter Boles, Dr. Charles Perry, the ET faculty and Dean Thomas Cheatham of the College of Basic and Applied Sciences for their encouragement and support.



# Phi Kappa Phi chapter honored, students recognized

## 2 undergrads named 'Emerging Scholars'

by Dr. John R. Vile  
jvile@mtsu.edu

Phi Kappa Phi, a National Honor Society that recently recognized MTSU as an outstanding chapter, has announced that two MTSU students are among the 60 throughout the United States that have received Emerging Scholar Awards.

The students, both Buchanan Scholars, are Lauren A. Rigsby and Adam E. Emerson.

Rigsby graduated from Riverdale High School in Murfreesboro and is planning to major in biology. Emerson graduated from DeKalb County High School in Liberty, Tenn., and is majoring in psychology and international relations.

Specifically created "to respond to the needs of undergraduate students in American higher education," Phi Kappa Phi awards these honors to rising sophomores with a grade-point average of at least 3.75.



Emerson



Rigsby

Each award is for \$250. In contrast to the Phi Kappa Phi Fellowship Award, which MTSU students have won rather consistently during the last decade (Taylor Barnes, an honors graduate majoring in chemistry and physics now attending the California Institute of Technology, received the Fellowship Award this year), the Emerging Scholar Award is one for which students apply rather than being nominated by the home institution.

Dr. Bill Badley, Phi Kappa Phi chapter president, noted that these awards further emphasize MTSU's emergence as a leading state university. He observed that "this makes a fitting complement" to *Forbes* magazine's recent recognition of MTSU as one of the top 50 "best buys" in the nation.

Dr. John R. Vile is dean of the University Honors College and a professor of political science at MTSU.

## Local lauded as 'Chapter of Merit'

by Tom Tozer  
ttozer@mtsu.edu

The Honor Society of Phi Kappa Phi recently recognized the campus chapter at MTSU as a Chapter of Merit. This award is given to chapters that not only comply with the society's national standards but also demonstrate an active commitment to excellence.

By receiving the Chapter of Merit distinction, MTSU's Phi Kappa Phi chapter is being recognized as a thriving organization that meets frequently, holds annual initiations and applies frequently for Phi Kappa Phi's select scholarships, grants and fellowships.

"The MTSU Phi Kappa Phi Chapter's distinction as a Chapter of Merit speaks to the academic quality of our faculty and students and their leadership in scholarly excellence and service," said Dr. Diane Miller, MTSU interim executive vice president and provost.

"This award also recognizes our students who have competed nationally and received PKP fellowships and scholarships."

"This award is a testament to the fine leadership we have had under our past president Lucy Langworthy (adviser in the College of Liberal Arts) and our current president Dr. Bill

Badley (assistant vice provost)," added Dr. John Vile, dean of MTSU's Honors College.

"Perhaps as importantly, it is a testament to MTSU's own rising star as recognized in the recent *Forbes* magazine ratings."

*Forbes* recently listed MTSU among the top 100 public universities in the nation in its "America's Best Colleges" rankings.

Founded in 1897 and headquartered in Baton Rouge, La., Phi Kappa Phi is the nation's oldest, largest and most selective all-discipline honor society.



# Mapmakers collaborate on a new community picture

by Gina K. Logue  
gklogue@mtsu.edu

An MTSU researcher, two undergraduates, a high-school student and a high-school teacher have produced a land cover map of the Blackman area that is considerably more accurate than the best map currently downloadable from the federal government.

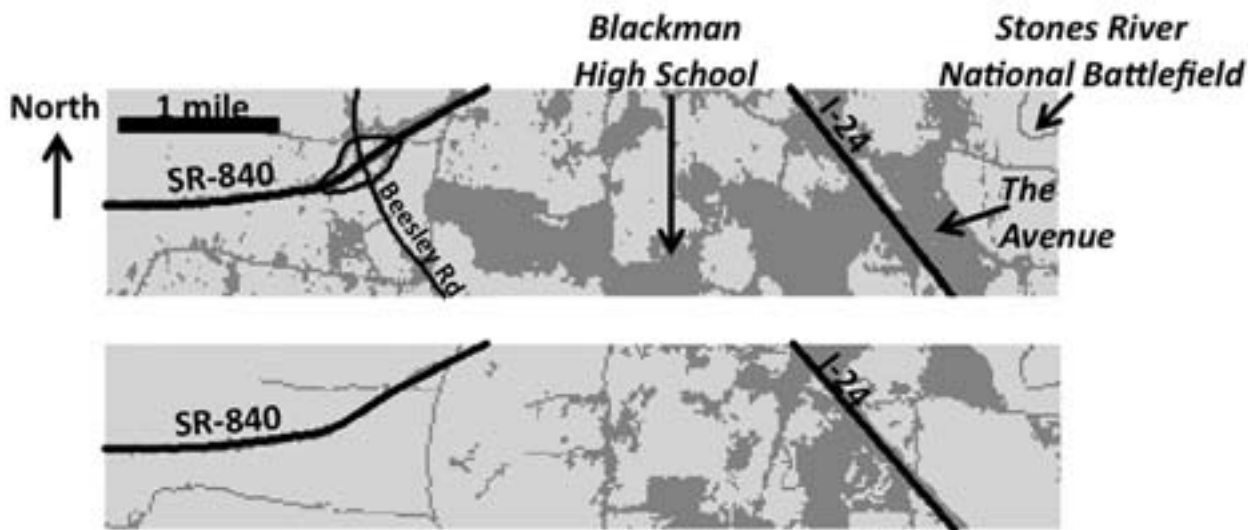
Dr. Mark Abolins, associate professor of geosciences, and his teammates were participants in the STEP<sup>MT</sup> program, which was created to "increase discovery-based learning and undergraduate research in the science, technology, engineering and mathematics (STEM) disciplines," according to the program's Web site. The program is funded by the National Science Foundation

through a grant to the College of Basic and Applied Sciences.

The land cover map depicts developed, agricultural and forested land within a 10-square-kilometer (3.9-square-mile) area extending from Stones River National Battlefield and The Avenue in the east across Interstate 24 through Blackman and over to State Route 840 and includes some natural forested areas to the northwest of Blackman.

To make the map, the STEP<sup>MT</sup> team used computers to combine information from a May 31, 2009, Landsat image and a June 2009 Rutherford County road map. Abolins divided the team into two groups, equipped them with Global Positioning System devices and sent them into the field to check the accuracy of the map. The entire project—map-making and accuracy assessment—was completed in less than eight weeks during June and July.

"We generated a bunch of random locations, downloaded them into GPS units, and then the students found each of those 519 locations and observed them from a road or the closest point that



**TRACKING GROWTH**—A new land cover map of the Blackman community in Rutherford County created by Dr. Mark Abolins' team, top, shows greater density and growth than a 2001 map from the federal government.

Maps courtesy of Dr. Mark Abolins

they could approach it," Abolins says.

The new map has an overall accuracy of 73 to 82 percent. The federal government's map is only 44 to 52 percent accurate.

"What we found was that our map was enormously more accurate than the best data of this kind that the federal government provides over the Internet," Abolins says.

He attributes the team's greater accuracy to the fact that developed land in the area increased from about 21 percent in 2001 (the date of the federal map) to between 46 and 57 percent in 2009.

The degree of accuracy is even more impressive in light of some of the obstacles the team encountered.

"We couldn't get very deep into some of the most forested areas because we would lose the satellite signal," says Siegel High School teacher Christina Nicholas. "Also, sometimes we couldn't get as close to our locations as we would like because they were on private property."

Nicholas, who also is an MTSU alumna and

graduate student in biology, says she never made a map before, but the experience turned out to be useful in helping her with her master's thesis.

Abolins says the practical applications, in addition to the obvious advantages of a more accurate picture of the area, could include environmental research.

"These are the headwaters of a couple of tributaries of the west fork of the Stones River," he says. "The landscape affects water quality. ... This was a good area to investigate from that perspective."

In addition to Nicholas, the STEP<sup>MT</sup> team members working under Abolins' guidance were Jordan Graw, an undergraduate geosciences major from Hermitage; Erica Cathey, an undergraduate physics and astronomy major from Murfreesboro; and Taylor Bailey, a Blackman High School student.

Abolins presented his team's work to his fellow professionals at the eighth Middle Tennessee Geographic Information System Forum in Lebanon, Tenn., on Sept. 16.



Abolins



# Campus Calendar

## Oct. 5-18

### Please note:

Event dates, times and locations may change after press time. Please verify specifics when making plans.

### TV Schedule



**"Middle Tennessee Record"**  
Cable Channel 9:  
Monday-Sunday, 7 a.m., 5 p.m.  
NewsChannel 5+:  
Sundays, 1:30 p.m.  
Visit [www.mtsunews.com](http://www.mtsunews.com)  
for other cable-outlet airtimes  
or [www.youtube.com/mtsunews](http://www.youtube.com/mtsunews)  
for a complete show archive.

### Through Oct. 22

**Photo Exhibit: "Relics: Photographs by Brad Temkin"**  
8 a.m.-4:30 p.m. Monday-Friday, noon-4 p.m. Saturday, 6-9:45 p.m. Sunday  
Baldwin Photo Gallery  
For information, contact: 615-898-2085.

### Oct. 5

**Monday, Oct. 5**  
**Fall Honors Lecture Series: Dr. David Rowe, "American Association of University Professors at MTSU"**  
3-3:55 p.m., Room 106, Honors Amphitheatre  
For information, visit [www.mtsu.edu/~honors](http://www.mtsu.edu/~honors) or contact: 615-898-2152.

### Oct. 6

**Oct. 6-10**  
**International Barrel Racing Association National Finals Barrel Race Championships**  
Tennessee Miller Coliseum  
For information, visit <http://ibra.us>.

**Tuesday, Oct. 6**  
**"Blood Bowl" Blood Drive**  
blood-donation competition with University of Troy, sponsored by MTSU Student Government Association  
10 a.m.-4 p.m., Room 322, Keathley University Center  
For information, visit [www.givelife.org](http://www.givelife.org) or contact: 615-898-2464.

**Tuesday, Oct. 6**  
**JAWC Career/Professional Brown Bag Development Series: Dr. Gloria Hamilton, "Stress in the Workplace"**  
Noon-1 p.m., Dining Room C, James Union Building  
For information, contact: 615-898-2193.

**Faculty Recital: Christine Isley-Farmer, soprano; Todd Waldecker, clarinet; Jackson Henry, piano**  
8 p.m., Hinton Music Hall  
For information, visit [www.mtsumusic.com](http://www.mtsumusic.com).

### Oct. 8

**Thursday, Oct. 8**  
**Retired Faculty/Staff Coffee**  
9:30 a.m., Foundation House  
For information, contact: 615-898-5756.

**MTSU Flute Studio Recital**  
8 p.m., Hinton Music Hall  
For information, visit [www.mtsumusic.com](http://www.mtsumusic.com).

### Oct. 9

**Friday, Oct. 9**  
**MT Soccer vs. Arkansas State**  
7 p.m., Dean A. Hayes Track and Soccer Stadium  
For information, visit [www.goblueraiders.com](http://www.goblueraiders.com).

**MT Volleyball vs. Arkansas State**  
7 p.m., Alumni Memorial Gym  
For information, visit [www.goblueraiders.com](http://www.goblueraiders.com).

### Oct. 10

**Oct. 10-11**  
**Volunteer Ranch Horse Futurity**  
Tennessee Livestock Center  
For information, contact: 615-323-2328.

### Oct. 11

**Sunday, Oct. 11**  
**MT Soccer vs. University of Arkansas-Little Rock**  
1 p.m., Hayes Stadium  
**MT Volleyball vs. University of Arkansas-Little Rock**  
1 p.m., Alumni Memorial Gym  
For information, visit [www.goblueraiders.com](http://www.goblueraiders.com).

**Sunday, Oct. 11**  
**MTSU Brass Chamber Ensembles**  
7 p.m., Hinton Music Hall  
For information, visit [www.mtsumusic.com](http://www.mtsumusic.com).

### Oct. 12

**Monday, Oct. 12**  
**Columbus Day holiday**  
university open, classes as scheduled; banks, federal buildings, post offices closed

**Fall Honors Lecture Series: Dr. Fred Colvin, "Sports at MTSU"**  
3-3:55 p.m., HONR 106  
For information, visit [www.mtsu.edu/~honors](http://www.mtsu.edu/~honors) or contact: 615-898-2152.

**Faculty Senate Meeting**  
4:30 p.m., JUB 100  
For information, visit [www.mtsu.edu/facultysenate](http://www.mtsu.edu/facultysenate) or contact: 615-898-2582.

**Distinguished Lecture Series: Filmmaker Jesse Epstein**  
7 p.m., LRC 221  
For information, visit [www.jessedocs.blogspot.com](http://www.jessedocs.blogspot.com).

**Guest Duo Recital: Keith Benjamin, trumpet; Melody Turnquist, organ**  
8 p.m., First United Methodist Church, Thompson Lane  
For information, visit [www.mtsumusic.com](http://www.mtsumusic.com).

### Oct. 13

**Tuesday, Oct. 13**  
**MT Baseball: Grand Slam Fish Fry**  
6 p.m., Tenn. Livestock Center  
Tickets: \$20 at the door; children 6 and under eat free  
For information, visit [www.goblueraiders.com](http://www.goblueraiders.com) or contact: 615-898-2450.

### Oct. 14

**Wednesday, Oct. 14**  
**Employee Benefits Fair**  
9 a.m.-1 p.m., Tennessee Room, James Union Building  
For information, contact: 615-898-2929.

**Faculty Recital: Tonya Lawson, clarinet**  
8 p.m., Hinton Music Hall  
For information, visit [www.mtsumusic.com](http://www.mtsumusic.com).

### Oct. 15

**Thursday, Oct. 15**  
**MTSU Symphonic Band/MTSU Wind Ensemble**  
7:30 p.m., Hinton Music Hall  
For information, visit [www.mtsumusic.com](http://www.mtsumusic.com).

### Oct. 16

**Oct. 16-17**  
**Tennessee Dairy Expo**  
Tennessee Livestock Center  
For information, contact: 615-790-5721.

**Oct. 16-18**  
**Smoky Mountain Reins Show and Volunteer Breeders Classic**  
Tennessee Miller Coliseum  
For information, visit [www.tnrha.org](http://www.tnrha.org).

**Friday, Oct. 16**  
**MT Volleyball vs. North Texas**  
7 p.m., Alumni Memorial Gym  
For information, visit [www.goblueraiders.com](http://www.goblueraiders.com).

### Oct. 17

**Oct. 17-20**  
**Fall Break**  
No classes; university offices open.

**Saturday, Oct. 17**  
**2009 Blue Raider Hall of Fame Induction Ceremony**  
12:30 p.m., Kennon Hall of Fame  
For information, visit [www.goblueraiders.com](http://www.goblueraiders.com) or contact: 615-898-2450.

**MT Football vs. Mississippi State**  
3 p.m., Floyd Stadium  
For information, visit [www.goblueraiders.com](http://www.goblueraiders.com) or contact: 615-898-2450.

### Oct. 18

**Sunday, Oct. 18**  
**MT Volleyball vs. Denver**  
1 p.m., Alumni Memorial Gym  
For information, visit [www.goblueraiders.com](http://www.goblueraiders.com).

### Get noticed in *The Record*!

Submit your Campus Calendar items and news tips to [gfann@mtsu.edu](mailto:gfann@mtsu.edu) by 3 p.m. Wednesday, Oct. 7, for the Oct. 19 edition of *The Record* or by 3 p.m. Wednesday, Oct. 21, for the Nov. 2 *Record*. Don't forget to include specifics—who, what, where, when and why—with your contributions!



provided, continue to make MTSU the fastest-growing four-year institution in the TBR system."

From information collected by the Office of Records for enrollment services, there are 22,299 undergraduate students and 2,889 graduate students registered. These are increases of 1,047 undergrads (4.9 percent) and 269 graduate students (10.3 percent), respectively.

There are 3,596 first-time freshmen (140 more than '08) and 2,137 new transfers (202 more than '08). MTSU has 16,946 returning students, an increase of 764 from a year ago.

Soaring past 24,000 to 25,000 "means that MTSU continues to do an exceptional job of focusing primarily on quality academic programs and quality student-learning experiences," Sells said. "We are driven by the pursuit of quality in the types of students we enroll, the academic programs that we offer and in the kind of experiences students have as a part of this academic community.

"Growth is an outcome of demand to be a part of this high-quality institution. I think that MTSU

understands that if we do the right things to create a first-rate learning environment, then reasonable growth will be a natural byproduct."

Sells said MTSU administrators "continue to see a payoff to our focus on increasing retention and successful graduation of our students. The increase in our number of returning students was more than double the number of new transfer and new freshmen students combined.

"The entire university has made a priority of

improving the academic advising process and increasing academic support services for students. Again, it's an example of how focusing on the quality of the student experience naturally influences enrollment. As terrific as it is to be the No. 1 choice of so many new students, nothing makes me happier than seeing this evidence of how we are improving the experience and the success of our already-enrolled students."

MTSU Enrollment	2008 Fall Semester	2009 Fall Semester	Net Increase/Decrease
Head count	23,872	25,188	1,316 (5.5%)
Undergraduate students	21,252	22,299	1,047 (4.9%)
Graduate students	2,620	2,889	269 (10.3%)
First-time freshmen	3,456	3,596	140 (4.0%)
New transfers	1,935	2,137	202 (10.4%)
New undergrad special	34	37	3 (8.8%)
New graduate students	698	816	118 (16.9%)
Returning students	16,812	16,946	764 (4.5%)
Re-enrolling students	1,555	1,630	75 (4.8%)

Source: MTSU Enrollment Services

Pharmacy

from page 1

campus facility after refilling your prescription online and pick it up in between classes. You also may pick up or drop off your prescriptions at the drive-through.

MTSU's Campus Pharmacy is a first-class facility with a convenient Wellness Center and friendly professional staffers who provide personalized service. The pharmacy accepts all insurance providers for MTSU students, faculty, staff and their dependents and most other insurance plans under which MTSU students are covered. MTSU pharmacy personnel will accept prescriptions—in-person, phoned-in or faxed—from any physician.

For those who wonder why they

should consider the MTSU Campus Pharmacy instead of their regular outlet, Pharmacy Director Tabitha "Tabby" Ragland says it's more convenient, and the co-pays are the same as elsewhere.

And last, but not least, she says, "We who work and study here should support our university.

"In most cases, there will be more traffic getting to other pharmacies in the community, and Alumni Drive is less crowded than other roads on campus," she points out.

If she were doing a commercial for the new pharmacy, Ragland says

her slogan would be "Personal, fast and convenient service.' In what other environment can you walk and get your prescription filled where you work? To students, my pitch

would be 'convenience, price and personal service.'"

A major concern now is the flu, both the conventional strain and the H1N1 virus.

"We are able to take care of all your flu-related needs," Ragland says. "Also, we have medications in stock for all of your travel-related preventions and treatments. All in all, we go above and beyond to

ensure that your medications are affordable and explained to you. We do not hesitate to contact physicians when changes are needed. We also provide additional information and literature when necessary. I would ask every person on campus to give us a try."

The MTSU Campus Pharmacy is open Monday through Thursday, except for university holidays, from 8 a.m. to 4:30 p.m.; the drive-through is open until 5 p.m. On Friday, the hours are 8 a.m. to 4 p.m. and the drive-through is open until 4:30 p.m.

For more information, call 615-494-8888 or visit [www.mtsu.edu/pharmacy](http://www.mtsu.edu/pharmacy).



Flu

from page 1

need two shots, but adults will need only one. If a patient shows flu-like symptoms, he or she is treated as if H1N1 had been confirmed.

"Definitive testing for H1N1 can be done more quickly now, but it's still a send-off test and is not recommended," Clark says.

Symptoms of a worsening case of the flu that needs immediate attention include difficulty breathing or shortness of breath, pain or pressure in the chest or abdomen, sudden dizziness, confusion, severe or persistent vomiting, and the return of these symptoms with fever and cough after a period of improvement.



**JUST AN EENSY STING**—Sophomore Amy Jennings, an anthropology major from Murfreesboro, gets her seasonal flu vaccination from Campus Pharmacy Director Tabby Ragland during a flu-shot clinic Sept. 14 in the Keathley University Center.

MTSU Photographic Services photo by J. Intintoli

Patients are being advised not to go to work or school until they are fever-free for at least 24 hours. Clark says Health Services personnel have been seeing about 80 people with suspected H1N1 each week.

Unlike seasonal flu, for which the primary high-risk group is the elderly, the H1N1 virus appears to target young people who were born after the swine-flu outbreak in the 1970s.

"Pregnant women are high on the agenda to be offered the immunization because there's been a higher death rate among pregnant women in the second and third trimester," says Dr. Pat Spangler, Health Services medical director.

A new wrinkle in Health Services' protocol this semester is the practice of issuing notes for students to take to classes and workplaces confirming their treatment.

Health care professionals already have administered all 900 doses of seasonal flu vaccine to MTSU students, staff and faculty. More doses of that vaccine are on order, but Health Services Director Rick Chapman says further shipments likely will be delayed because agents from the U.S. Food and Drug Administration have been shifted from seasonal flu assignments to H1N1 assignments.

For more information on H1N1, seasonal flu and MTSU Health Services' procedures and protocols, as well as inoculation schedule updates, go to [www.mtsu.edu/healthservices/swineflu.shtml](http://www.mtsu.edu/healthservices/swineflu.shtml).



# New dual exhibit offers 2 artists' perspectives

by Lisa L. Rollins  
lrollins@mtsu.edu

The Todd Gallery at MTSU will serve as host for a joint exhibit of artworks by Steve Prince and Boris Zakic from Oct. 6 through Oct. 22.

"The Steve Prince/Boris Zakic Exhibit" will include a free public reception for the artists on the exhibit's opening day, Tuesday, Oct. 6, from 4 to 5 p.m.

Participating artist Prince, who is a native of New Orleans, works primarily as a linoleum printmaker. He earned a Bachelor of Fine Arts degree from Xavier University in Louisiana and a Master of Fine Arts from Michigan State University.

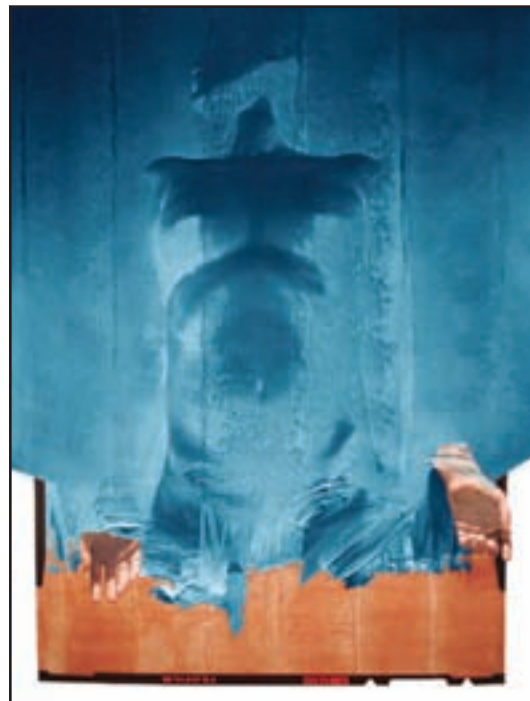
"Steve richly embeds layers of symbolism, cultural icons and biblical references in his work," Eric Snyder, gallery curator, said of Prince. "He deals in themes of social and racial justice and visually explores a biblical response to the problems consuming today's urban communities."

Currently a resident of Hampton, Va., Prince frequently lectures in secular and sacred settings and is the winner of numerous awards and honors.

Artist Zakic is a recent arrival to Kentucky and among the newest members of the art faculty at Georgetown College. He holds a Master of Fine Arts from the University of New Orleans.

Snyder said Zakic's unique style combines the traditional techniques of the old masters with philosophical concerns that resonate across all periods of human history.

"A constant theme in his paintings is the integration of text, usually a single word often represented as a figure," Snyder observed. "He believes that words have no intrinsic meaning—they function as indicators with layers of possible meaning. He also signifies images, but not by the words generally associated with them."



**DUAL EXHIBITION**—"I Pray That Generations: Letter to the Children," above left, a print by artist Steve Prince, and "Figure on a Flat Field," an oil painting on linen by Boris Zakic, are among the works included in a joint exhibition by the artists in the Todd Gallery beginning Tuesday, Oct. 6.

Artwork courtesy of the artists

The Todd Gallery is open 8 a.m.-4:30 p.m. Monday through Friday and closed on state and university holidays. Admission to the gallery is always free. For information, please contact Snyder at 615-898-5653.

## Benefits Fair set for Oct. 14

The annual MTSU Employee Benefits Fair will be held Wednesday, Oct. 14, from 9 a.m. to 1 p.m. in the Tennessee Room of the James Union Building.

Open to all MTSU employees, the event will feature more than 50 benefits vendors. Human Resource Services will assist those who want to make changes for the 2009 annual enrollment/transfer period.

Employees may register for door prizes but will not need to be present to win.

For more information, please call 615-898-2929.

## Celebrating literacy



**READING FOR SUCCESS**—MTSU Professor Emeritus Dr. Mary Tom Berry, center, chats with guests during the Literacy Studies Gala at Stones River Country Club Sept. 4. Listening in are Dr. Diane Miller, far left, interim executive vice president and provost, and her husband, Jim, far right; Dr. Rebecca Fischer, chair of the Department of Speech and Theatre, second from left; and Dr. Michael Allen, second from right, vice provost for research and dean of the College of Graduate Studies, and his wife, Kris, center right. The group joined students, staff and faculty to celebrate the success of the first year of the new literacy studies doctoral program at MTSU.

MTSU Photographic Services photo by Andy Heidt

# Free Disney leadership session scheduled on campus Oct. 27

Join us for the Disney Keys to Excellence program

DATE: Monday, Oct. 26, 2009

LOCATION: Sheraton Downtown Nashville, 625 Union St.

REGISTRATION AND INFORMATION: Phone: 877.544.2384 Online: [www.KeysNashville.com](http://www.KeysNashville.com) Email: [registrations@KeysUS.com](mailto:registrations@KeysUS.com)

Event organized by Solution Infusion

**Disney Keys to Excellence One Day Program Topics:**

- LEADERSHIP** Discover how effective leadership has driven Disney's employee/customer satisfaction and bottom-line results, from the company's inception to today.
- MANAGEMENT** Understand the importance of integrating your corporate culture into selection, training, and care of your employees.
- CUSTOMER SERVICE** Explore world-renowned Disney principles for service excellence.
- LOYALTY** Learn key practices and principles in building and sustaining loyalty that have made Disney a trusted and revered brand around the world for more than 75 years.

## Supplement to Nashville conference

As a supplement to the all-day Disney Keys to Excellence conference that will be held in Nashville on Monday, Oct. 26, Disney Keys organizers have agreed to present a 90-minute session on leadership on campus on Tuesday, Oct. 27.

The Oct. 27 event at MTSU will be free of charge and open to everyone.

The free session will be held in the Tennessee Room in the James Union Building and will be conducted from 9 to 10:30 a.m.

Those interested in attending should call Chrissy Koepfgen in the Jones College of Business at 615-898-2764 or e-mail her at [ckoepfge@mtsu.edu](mailto:ckoepfge@mtsu.edu) to register. Seating will be limited to room capacity.

Those still interested in attending the all-day Disney Keys to Excellence conference at the Sheraton Downtown Nashville on Oct. 26 may register at [www.KeysNashville.com](http://www.KeysNashville.com). Please use promotional code MTSUSFEE when registering for the Oct. 26 event to receive a discounted price of \$310 per attendee.

The Jones College of Business is a gold sponsor of the Disney Keys to Excellence conference.



# Gather old medications, dump them safely Oct. 10

**M**TSU's Health Promotion Office is supporting a prescription drug take-back event on Saturday, Oct. 10, with the Community Anti-Drug Coalition of Rutherford County.

The collection, which will be conducted in the parking lot behind Reeves-Sain Drug Store at 1807 Memorial Blvd. from 10 a.m. to 4 p.m., is an opportunity for citizens to turn in expired and/or unused drugs to be safely destroyed without the environmental impact that can come from flushing them down sinks and toilets.

"Surveys have also shown that many teenagers who abuse or sell prescription drugs get them from their parents' and grandparents' medicine cabinets, so we hope to reduce access by getting unneeded ones out of people's homes," said Lisa Thomason, director of health promotion at MTSU and one of the organizers of the event.

"While this is not an MTSU-specific event, some of our students will be involved in the collection and destruction process, and of course, we'd love to have faculty, staff, and students bring their unneeded medicines by the event."

The prescription take-back event is sponsored by Reeves-Sain and CAD-COR with support from MTSU as well as Rutherford County Emergency Management Services, Murfreesboro Police Department, Centerstone behavioral health care provider and the Rutherford County Drug Court.

For more information, contact Thomason at 615-494-8704 or [thomason@mtsu.edu](mailto:thomason@mtsu.edu).



## TV's 'Judge Alex' to present Oct. 5 honors lecture

by Randy Weiler  
[jweiler@mtsu.edu](mailto:jweiler@mtsu.edu)

**M**TSU pre-law students and others are in for a special treat when TV personality "Judge Alex," the Hon. Alex Ferrer, appears for a University Honors College lecture.

The event, which is free and open to the public, begins at 1:30 p.m. Monday, Oct. 5, in the Paul W. Martin Sr. Honors Building Amphitheatre, Room 106.

"The speech will be open to everyone, but we are especially pitching this to our pre-law students," Honors College Dean John Vile said.

"Judge Alex is a great example of a Latino immigrant who has used the law both to elevate himself and to educate others to the value of law," Vile added. "He has a nationally syndicated television program and hopes to speak to our students about his own career path and what it has taught him."

Ferrer's show, "Judge Alex," is in its fifth season and airs from 2 to 3 p.m. weekdays on WUXP Channel 30.

Ferrer, a former police officer, lawyer and Florida judge, was born in Havana, Cuba, in 1961, but immigrated to America with his family a year later.

## 50+ schools join MTSU for College Night

**T**he annual Rutherford County College Night will be held Monday, Oct. 12, from 5:30 until 7:30 p.m. in Murphy Center, MTSU admissions officials said.

The event is free and open to the public. Any student and their parents or guardians from public or private high schools in Rutherford and surrounding counties are welcome to attend to learn about higher-education opportunities, said

Michelle Arnold, an associate director in the Office of Admissions.

Representatives from more than 50 colleges, universities, community colleges and other organizations from across Tennessee and the South have requested booth space around the track area, Arnold said.

MTSU's Office of Financial Aid will have a booth manned by Bonnie McCarty and Melanie Collins, said Director David Hutton. McCarty and

Collins are scholarship and HOPE Lottery Scholarship experts who can answer financial-aid questions, Hutton added.

Students can ask their guidance counselors for details or call 615-898-2111 for more information, Arnold said.

The event is endorsed by the Tennessee Association of Collegiate Registrars and Admissions Officers.

### Faculty

upcoming Ninth International Holocaust Studies Conference on WGNS Radio's Sept. 21 "Action Line" program.

### Miscellaneous

**The School of Agribusiness and Agriscience** has experienced a 13 percent growth in ABAS majors and a 10 percent increase in student credit hours, director **Dr. Warren Gill** said. In 2008, Gill and **Drs. Cliff Ricketts** and **Alana Neely** piloted a dual-credit horticulture course, enrolling more than 100 high-school students. The students had the option to pay \$60 to MTSU and take an MTSU final exam for the course. Students who passed the course could add the credit to future college transcripts.

### Panels

**Randy O'Brien** (WMOT 89-FM), author of *Judge Fogg*, will join a panel discussion, "The Line Between Guilt and Innocence—Three Mysteries" with fellow authors Scott Pratt and Peggy Erhart on Oct. 11 at the 2009 Southern Festival of Books in Nashville. For details, visit [www.humanitiestennessee.org/festival/sessions.php](http://www.humanitiestennessee.org/festival/sessions.php).

### Passages

**Mr. Gene "Bud" Morton** (Parking and Transportation Services), 63, passed away Sept. 20.

Mr. Morton, a Rutherford County native and a bus driver for Parking and Transportation Services, was employed by MTSU from October 1979 until his retirement in June 2001. The son of the late Edgar and Beatrice Moody Morton, Mr. Morton was preceded in death by his first wife, Carol Ann Morton; sisters Virginia Hill and Sara Louise Morton; and brothers Edgar "Hopper" Jr., Nelson, Spain and Readie Morton. He is survived by his wife, Diane Robinson Morton; his children Steven (Charlene) Morton, David Allen (Gail) Morton and Tammy (Matt) O'Donnell; grandchildren Danielle O'Donnell, Courtney O'Donnell and Bethanie Morton; brother James "Butch" (Judy) Morton; sisters Mary Ann Sewell and Lillie (John) Walls; and several nieces and nephews.

**Dr. Burns P. Phillips Jr.** (mathematics), 86, passed away Sept. 10. Dr. Phillips, a Shelbyville native and the son of the late Alma Grubbs Phillips and Burns P. Phillips Sr., was employed by MTSU from September 1957 until his retirement in May 1983. He is survived by his wife of 62 years, Faye Kent Phillips of Watertown, Tenn.; his daughter and son-in-law, Candice and Jim Ousley of Paducah, Ky.; and his son and daughter-in-law, Burns III and Sally Phillips of Nashville. Dr. Phillips also is survived by five grandchildren and nine great-grandchildren. A 1941 graduate of Murfreesboro Central High School,

where he was an athlete and scholar, Dr. Phillips attended the University of Tennessee briefly before joining the Marines in 1942. He was seriously wounded on the South Pacific island of Peleliu in September 1944 while serving with the 1st Marine Division. He returned to Murfreesboro in 1945 to resume his education at George Peabody College, and after graduating, he taught at Murfreesboro Central High School before becoming its assistant principal and then principal. In 1959 he joined the staff of the Department of Mathematics at MTSU where he taught until his retirement. Dr. Phillips was the first president of the Murfreesboro Exchange Club and also was an outdoor enthusiast.

### Presentations

**Dr. Jo Edwards** (Adams Chair of Excellence, Center for Health and Human Services) participated in the Tennessee Public Health Association's annual meeting in Franklin, Tenn., Sept. 2-3. Posters were presented on three grants administered by CHHS: "SIDS Education: Reducing Risk in Middle Tennessee," "Cancer Control and Prevention—A-B-C-1-2-3 Healthy Kids in Tennessee" and "Student Tobacco Outreach Prevention (STOP)." The CHHS also had a display highlighting MTSU and the CHHS for viewing by conference participants, and Edwards and **Cynthia Chafin** (CHHS) were available for questions.

### from page 8

**Dr. Patrick Geho** (business communication and entrepreneurship, Tennessee Small Business Development Center) presented "Conflicts Businesses Face in Enforcement of Employee Noncompete Contracts" Sept. 15 at the Association of Small Business Development Center's national conference in Orlando, Fla.

### Publications

**Dr. Gloria J. Hamilton** (psychology) will publish three articles in an upcoming edition of the journal *Psychology of the Schools*: "How do executive functions fit with the CHC model?: Some evidence from a joint-factor analysis of the Delis-Kaplan Executive Function System and the WJ III Tests of Cognitive Abilities" (with co-authors R.G. Floyd, R. Bergeron and G.R. Parra), "Prescription Drug Abuse" and "Types and Treatment of Pediatric Sleep Disturbances."

**Ken Middleton** (Walker Library) co-authored an article on "Volunteer Voices," Tennessee's statewide digitization program, in the September/October 2009 edition of *D-Lib Magazine* (Vol. 15, No. 9/10). The article also mentions MTSU's Center for Popular Music and features the sheet-music image from "Monkey Bizz," one of about 750 images contributed by the CPM.



**LOOKING OUT FOR THE ECONOMY—**C.M. "Bill" Gattton, an investor and entrepreneur whose business interests have included auto dealerships, banks and commercial real estate, listens at right to former Dean of Students Judy Smith, center, and her husband, longtime MTSU supporter Tommy Smith, right, during a break in MTSU's 17th annual Economic Outlook Conference Sept. 24 at the Embassy Suites Hotel and Conference Center in Murfreesboro. Below, Jennings A. Jones College of Business Dean Dr. Jim Burton, left, presents the 2009 Jennings A. Jones Champion of Free Enterprise Award to Gattton during the conference. Gattton, 76, has donated millions of dollars to schools and universities. The University of Kentucky College of Business and Economics bears his name, as does the College of Pharmacy at East Tennessee State University. The annual Champion of Free Enterprise Award recognizes an honoree "who exemplifies the ideals of free enterprise through any combination of entrepreneurship, governmental involvement, participation in civic and charitable affairs and education." Members of the Middle Tennessee Chambers of Commerce nominate award candidates from their own membership.



MTSU Photographic Services photos by Andy Heidt



Get noticed in MTSU's official university publication!  
Check *The Record's* 2009 deadline schedule at  
[http://frank.mtsu.edu/~proffice/rec\\_deadlines.htm](http://frank.mtsu.edu/~proffice/rec_deadlines.htm).

## the RECORD

**Tom Tozer**  
Director, News and Public Affairs

Editor: Gina E. Fann, [gfann@mtsu.edu](mailto:gfann@mtsu.edu)

**Contributors:** Gina K. Logue, John Lynch, Paula Morton, Lisa L. Rollins, Randy Weiler, Eric Jackson, Claire Rogers, Drew Dunlop, Sydney Hester and Megan McSwain.

**Winner, 2009 Special Merit Award for Internal Tabloids and Newsletters, Council for Advancement and Support of Education, District III.**

**Winner, 2009 Gold Award, Electronic Newsletter, and Silver Award, Printed Newsletter, Tennessee College Public Relations Association.**

**Photos:** MTSU Photographic Services, except where noted.

Printed by Franklin Web Printing Co.

Phone: 615-898-2919  
Web site: [www.mtsunews.com](http://www.mtsunews.com)

MTSU's Office of News and Public Affairs publishes *The Record* every two weeks and distributes 3,500 copies free to faculty, staff, friends and media outlets.

Address all correspondence to:

**The Record**  
Office of News and Public Affairs  
MTSU P.O. Box 72  
1301 E. Main St.  
Murfreesboro, Tenn. 37132

MTSU, a Tennessee Board of Regents Institution, is an equal opportunity, non-racially identifiable, educational institution that does not discriminate against individuals with disabilities.

UR040-0909

## Faculty/Staff Update

### Appearances

**Professor Marc J. Barr** (electronic media communication) has been invited to judge an international animation festival, Aniwow! 2009, at the Communication University of China in Beijing Oct. 28-21. He also will give a talk on the Association for Computing Machinery's Special Interest Group on Graphics organization and ACM SIGGRAPH conferences to students and faculty.

### Appointments

**Drs. Patricia Wall** (accounting) and **Donald A. Campbell** (mathematics) have been named to the Test Development Committee responsible for guiding the content and policies of the College Board's College-Level Examination Program exams. Wall will work with the CLEP exam in introductory business law, while Campbell will work with the pre-calculus CLEP exam. Both committee appointments are for one year and renewable for up to four years. College faculty are selected as members of CLEP committees because of their commitment to the best practices of teaching, assessment and pedagogy at the introductory level within their discipline. They must also teach the comparable course at their institution. CLEP officials said it's "unusual" for two professors at

the same university to be named to exam committees.

### Awards

Faculty members in the College of Basic and Applied Sciences have received 2008-09 awards for the following:

- Excellence in Grantsmanship—**Drs. Anthony Farone** (biology), **Mary Farone** (biology), **Kim Sadler** (biology/Center for Environmental Education), **Rick Vanosdall** (Tennessee Math Science, Technology Education Center), **Mary Martin** (TMSTEC), **Dovie Kimmins** (TMSTEC), **Kathy Mathis** (engineering technology/Tennessee Lead Elimination Program) and **Carol Boraiko** (ET/TN LEAP);
- Excellence in Teaching—**Drs. Bruce Cahoon** (biology) and **Sing Chong** (chemistry);
- Teaching Innovations—**Drs. Judith Bonicamp** (chemistry), **Jungsoon Yoo** (computer science) and **Sung Yoo** (computer science);
- Excellence in Publications—**Drs. Beng G. Ooi** (chemistry), **Jeff Leblond** (biology), **Wendy Beckman** (aerospace) and **Anhua Lin** (math);
- Excellence in Presentations—**Drs. Michael Sanger** (chemistry) and **Judith Iriarte-Gross** (chemistry); and
- Excellence in Service—**Dr. Michael Sanger** (chemistry) and **Joe Hawkins** (aerospace).

### Exhibitions

Computer-designed covered cups by **Professor Marc J. Barr** (EMC) have been accepted into "Drink in the Art: A National Juried/Invitational Cup Show" at the Isadore Gallery in Lancaster, Pa., through Oct. 31.

### Grants

**Drs. Bruce Cahoon** and **Sarah Bergemann** (biology) received National Science Foundation Major Research Instrumentation funding of \$254,000 to purchase an automated genetic analyzer. The instrument will help advance the research program for themselves and other faculty.

**Dr. Scott Handy** (chemistry) is the recipient of a National Institutes of Health Area grant for \$186,000 to study transition-metal-catalyzed cross-coupling reactions on heteroaromatics. Specifically, his research will examine the synthesis of potential new antibodies for the treatment of multi-drug-resistant infections.

### Media

**Drs. Nancy Rupprecht** (history), **Janet Belsky** (psychology), **Ron Bombardi** (philosophy) and **Larry Burriss** (journalism) discussed the

See 'Faculty' page 7