

# THE ALUMNI RECORD

News for MTSU alumni and friends

September 2008 Vol. 6 / No. 1

## BET ON BLUE

### Everyone's 'All In' as Homecoming 2008 activities build to MT game vs. Warhawks

By Rhonda Wright [rwright@mtsu.edu](mailto:rwright@mtsu.edu)

You can bet that Homecoming 2008 will hit the jackpot the week of Nov. 3-8.

Tying in with the football season slogan of "All In," the homecoming theme is "Bet on Blue."

Your Alumni Relations office has been working with student groups to stack the deck with events planned throughout the week that will build on the traditions of the past and make memories for the future.

"We want to increase diversity by having more organizations involved in homecoming this year," explains Clarissa Blackwood, the Student Government Association's homecoming director. "Our goal is to make this the biggest and best home-



MTSU Alumni Relations

Chip Walters ('85), left, co-announced the 2007 Homecoming Parade with Jim Freeman ('69, '73) during Mixer on Middle at The Alumni House. This year, Walters' co-announcer will be Nick Paranjape ('91) of Fox 17 News.

coming yet by growing student and alumni participation, as well as raising community support."

The week starts with the T-Shirt Swap. Alumni can visit the Alumni

House between 8 a.m. and 4:30 p.m., Monday, Nov. 3, through Friday, Nov. 7, to trade a shirt from another school for the official 2008 Homecoming shirt.

(See 'Bet,' Page 4)

### YOUNG ALUM

## Fulcher finds his niche in New York

By Randy Weiler [jweiler@mtsu.edu](mailto:jweiler@mtsu.edu)

Alumnus Paul Fulcher has yet to meet New York City Mayor Michael Bloomberg, the namesake for the company Fulcher works for in Manhattan.

"Actually, I saw him (Bloomberg) with (California (Gov.) Arnold Schwarzenegger, but I never got to meet him," Fulcher ('07), an analyst for the company since August 2007, said recently.

While Fulcher may not have met Bloomberg the man, he said he thrives in the fast-paced environment of the company and the city that never sleeps.

"It's nonstop. There's always something going on," he said.



Fulcher

(See 'Fulcher,' Page 2)

## Fun had by all at first Alumni Summer College

By Rhonda Wright [rwright@mtsu.edu](mailto:rwright@mtsu.edu)

A group of 41 alumni and friends from seven states returned to school this summer for the inaugural Alumni Summer College June 25-27.

Designing the program around the theme Exploring Our Heritage, the Office of Alumni Relations was proud to host the 2 1/2-day event, providing the opportunity to relive college days while learning through educational and entertaining classes and tours.

The college began on Wednesday afternoon with a scavenger hunt of historical university facts. Participants bonded quickly as they shared stories and feasted on barbecue under a tent in the backyard of the Alumni House. Former students of Dr. Bob Womack got the chance to visit with him, a special guest for the night. It was clear that Blue Raiders share pride in their alma mater.

Classes began on Thursday

(See 'Fun,' Page 8)



MTSU Alumni Relations

The inaugural Alumni Summer College field trip was a highlight of the program. The class traveled to Nashville, where they received VIP treatment as they toured the Ryman Auditorium and enjoyed the Grand Ole Opry.

**MIDDLE  
TENNESSEE**  
STATE UNIVERSITY

Advancement Services  
MTSU P.O. Box 109  
1301 E. Main St.  
Murfreesboro, TN 37132

CHANGE SERVICE REQUESTED

### INSIDE . . .

**Alumni of distinction, Page 2**  
**Calendar, Page 3**  
**Class notes, Page 6**  
**Reed takes reins, Page 7**  
**Lunch with President, Page 8**

NONPROFIT ORGANIZATION  
U.S. POSTAGE PAID  
MTSU  
1301 E. MAIN ST.  
MURFREESBORO, TN 37132  
PERMIT 169



# MTSU National Alumni Association Board adds 7 new members

From MTSU Alumni Relations

Seven MTSU alumni have been chosen to serve on the National Alumni Association Board of Directors. Each new member was selected from written nominations and is asked to serve a three-year term.

“We are very excited about our new members and are anxious for them to use their diverse talents to further advance the Alumni Association,” said Ginger Freeman, director of the Office of Alumni Relations.

The new members, all from Tennessee, include: Ben Bennett ('04), Lascassas; Casey Guimbellot ('06), Nashville; Aubrey Hardison ('00), Murfreesboro; Jonathon L. Hawkins ('93, '00), Murfreesboro; Brad Newberry ('93), Rockvale; Kelly Rollins ('93), Murfreesboro; and Emily M. Wright ('07), Murfreesboro.

The mission of the National Alumni Association Board of Directors is to develop and foster sound relationships between MTSU and its alumni and to provide a strong force for the advancement and support of the university.

Nominations for the 2009-10 Board of Directors will be accepted beginning in January 2009. Please support your Alumni Association by nominating someone to serve. We look forward to seeing you at an alumni event in your area. Visit [mtalumni.com](http://mtalumni.com) for more details.

## ALUMNI RELATIONS STAFF

Ginger Corley Freeman, Director  
Michelle Stepp, Associate Director  
Molly Cochran, Assistant Director  
Paul Wydra, Assistant Director  
Rhonda Wright, Assistant Director  
Martha Jordan, Administrative Assistant  
Kari Janetvilay, Secretary

## MTSU Office of Alumni Relations MTSU Box 104

Murfreesboro, TN 37132  
1-800-533-MTSU (6878)  
615-898-2922 Fax: 615-898-5746  
[mtalumni.com](http://mtalumni.com)

## THE ALUMNI RECORD

Published quarterly (Sept., Dec., March and June)

Sidney A. McPhee, President

Joe Bales, VP, Development and Univ. Relations  
Tonja L. Johnson, Assoc. VP, Marketing and Comm.  
Tom Tozer, Director, News and Public Affairs  
Randy Weiler, Editor ([jweiler@mtsu.edu](mailto:jweiler@mtsu.edu))

Contributors: Gina Fann, Gina Logue, John Lynch, Lisa Rollins, Paula Morton and MTSU Office of Alumni Relations staff

Consultants: Suma Clark and Bill Fisher, MTSU Publications and Graphics  
Special assistance: Betsy Williams, MTSU Advancement Services

Photographs: MTSU Photographic Services, except where noted

Printed by Franklin Web Printing Co., Franklin, Tenn.

Attention Postmaster: Change Service Requested  
Address changes and other correspondence should be addressed to

Advancement Services  
MTSU P.O. Box 109  
1301 E. Main St.  
Murfreesboro, TN 37132

MTSU, a Tennessee Board of Regents university, is an equal opportunity, nonracially identifiable, educational institution that does not discriminate against individuals with disabilities.

UR013-0808

# MTSU alumni of distinction

Hooper, Pettus, Victory are Distinguished Alumni; Burt is Young Alumnus

By Randy Weiler [jweiler@mtsu.edu](mailto:jweiler@mtsu.edu)

The MTSU Alumni Association has announced its three Distinguished Alumni and one Young Alumni Achievement Award recipients for 2008-09.

The Distinguished Alumni recipients include:

- Linda Hooper ('63) of Whitwell, Tenn., who is being honored in the Professional Achievement category;
- Timothy E. "Tim" Pettus ('73) of Lawrenceburg, Tenn., who is being recognized in the Service to the Community category; and
- Kenneth Wayne "Coon" Victory ('67) of Smyrna, Tenn., who is being saluted in the Service to the University category.

The Young Alumni Achievement honoree is:

- Micheal J. Burt ('98, '02) of Murfreesboro.

The MTSU Alumni Association annually seeks and accepts nominations for the Distinguished Alumni and Young Alumni Achievement Awards. The selection is made from candidates who have distinguished themselves by obtaining a high level of service to their profession, their community and/or MTSU.

For more than 30 years, Hooper has been a public school educator, most recently as principal at Whitwell Middle School. In 2007, she was the recipient of the Joseph Prize for service to humanity for the Paper Clips Project.

Pettus serves as president of First Farmers and

Merchants Bank and Corporation in Columbia, Tenn., and head of Pettus-McLain Trucking Co. Inc. He has volunteered for many local organizations and he has been an ardent MTSU supporter.

Victory is the former president and CEO of Crosslin Supply Co. Inc. where he worked for 45 years before retiring, and he has been involved in many local, state and national organizations. He has many ties to MTSU's athletic and alumni efforts.

Burt recently left a successful career coaching girls' basketball to found his own company, Maximum Success. He has become an author, a sought-after speaker and consultant, teacher/professor, facilitator and continual learner.



Hooper



Pettus



Victory



Burt

## CAMPUS BRIEF



J. Intintoli/MTSU Photographic Services

## U.S.-Sino agreement

The June 22-27 U.S.-Sino Math and Science Workshop at MTSU concluded with the signing of a memorandum of understanding following the closing session and luncheon. Those in attendance included (from left): MTSU First Lady Elizabeth McPhee; MTSU Vice Provost for Academic Affairs Diane Miller; Dr. You Shaozhong, minister counselor at the Peoples Republic of China Embassy in Washington, D.C.; MTSU President Sidney A. McPhee; President Weng Limin of Northwest Normal University in China; President George Mehaffy of the American Association of State Colleges and Universities; and Deng Hualing, vice president of Northwest Normal University-China. About 125 math and science scholars from 20 China universities and 40 U.S. colleges attended the event. Alumnus Bart Gordon ('71) delivered the opening dinner keynote address.

## Fulcher

"It is Manhattan. It's a fast-paced environment. When anything slows down, I think, 'What am I supposed to do?'"

While Bloomberg "has a great training program for learning about marketing," Fulcher said that what sold Bloomberg on him was that, "I have a different background. I had come from the South."

Fulcher, an equity analytics specialist, said he had interned with Smith-Barney and UBS when he was in college.

"Bloomberg had the best fit of all the places I interviewed," he added. "Bloomberg has a

hand in all the major banks and all major sectors of the market. Right out of college, I would be working with so many young people from a lot of different colleges — Cornell, Colgate, New York University and all across the country — would be great for me."

He calls it "a great learning experience, entering the corporate world, working with Fortune 500 companies. It's hands on."

His top advice for new and future graduates wanting to take a job in New York City: "Have a position before you come. Be

ready to work really hard. Be excited and ready to cope with the unexpected. Come with versatility."

Fulcher is pursuing a professional certificate in financial analysis at NYU. In New York, he has attended a number of plays and sporting events.

Fulcher graduated cum laude with a double major in political science and economics and finance. He served as 2005-06 Student Government Association president and was a member of Alpha Gamma Rho fraternity and a Student Ambassador.

## from Page 1



# Alums, friends make splash at Nashville Shores



MTSU Alumni Relations photos  
Alumni and friends from across Middle Tennessee enjoyed a sun- and fun-filled day at Nashville Shores. Fang Yang ('05) of Murfreesboro and family check in at the MTSU alumni registration table.



Tonya ('02) and Josh Graham ('03) and future Blue Raider Landon, of Portland, Tenn., stop for a picture before enjoying the day at Nashville Shores. Alumni and friends received discounted ticket prices and a picnic lunch.



MTSU supporter Debbie Kennedy of Hermitage, Tenn., poses with her family and friends before cooling off in the park and reconnecting with other MTSU alumni.

## ALUMNI MAKING WAVES



Submitted photo  
Jeffery Reid ('81) of Atlanta, Ga., was executive producer for "Black in America," a two-part documentary that aired earlier in July on CNN. The programs examine how blacks have fared since Dr. Martin Luther King Jr.'s assassination in 1968.

Dr. Tim Webb ('96), right, of Spring Hill, Tenn., was named Tennessee Department of Education commissioner July 24 by Gov. Phil Bredesen. Webb had served as acting commissioner after the retirement of Lana Seivers ('72).



John Hood ('54, '74), left, of Murfreesboro joined the new MTSU Office of Community Engagement and Support in a part-time role Aug. 1. He served six terms in the Tennessee House of Representatives.

# CALENDAR

## Alumni Relations autumn events

### September

- 5 Homecoming Kickoff
- 6 Alumni Tailgate in Walnut Grove
- 6 The Ultimate Blue Raider Tailgater Contest
- 30 Alumni Legacy Golf Classic
- 30 Alumni Tailgate in Walnut Grove

### October

- 3-11 Alumni Travel presents Ireland

- 14 Young Alumni Gathering in Murfreesboro

### November

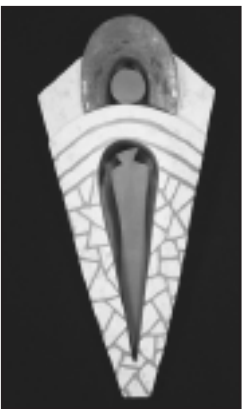
- 7 Golden Raider Reunion honoring Class of 1958
- 7-8 Homecoming (see Page 5 for full schedule)
- 8 Mixer on Middle Parade-Watching Party
- 22 Alumni Tailgate in Walnut Grove

For complete details about upcoming alumni events, go to [mtalumni.com](http://mtalumni.com).

## Campus-related autumn events

### September

- 5 First Friday Star Party\*\*
- 7 Dina Cancryn faculty voice recital\*
- 8-26 Alumni 2008 art exhibit\*\*\*\*
- 19 MTSU Chamber Winds/Wind Ensemble\*
- 22 Jamey Simmons faculty jazz recital\*
- 26 MTSU Concert Chorale and Middle Tennessee Choral Society — *Carmina Burana*\*
- 28 MTSU Concert Chorale and Middle Tennessee Choral Society — *Carmina Burana*\*
- 29 Todd Waldecker faculty clarinet recital\*



Glenda Guion's ('85) "Sepulcher" will be part of the Sept. 8-26 Alumni 2008 art exhibit.

### October

- 2 MTSU Women's Chorale\*
- 3 First Friday Star Party\*\*
- 6 Stones River Chamber Players\*
- 9 MTSU Symphonic Band/Wind Ensemble\*
- 18 Lynn Rice-See faculty piano recital\*
- 19 MTSU Symphony Orchestra\*
- 22-25 *Seussical the Musical*\*\*\*
- 23 MTSU Choral Concert\*

- 25 Contest of Champions\*
- 23 MTSU Choral Concert\*
- 30-31 MTSU Opera — *Sweeney Todd*\*

### November

- 1 The Friends of Music present An Evening of Swing\*\*\*\*
- 1 MTSU Opera — *Sweeney Todd*\*
- 7 First Friday Star Party\*\*
- 10 MTSU Jazz Ensemble I\*
- 12 MTSU Percussion Ensemble\*
- 13 MTSU Jazz Artist Series\*
- 13-15 Fall Dance Concert\*\*\*
- 17 MTSU Jazz Ensemble II\*
- 19 Leo Erice faculty piano recital\*
- 20 MTSU Wind Ensemble\*
- 23 MTSU Symphony Orchestra\*
- 30 *Messiah*\*
- 30 'Twas the Brass Before Christmas\*

\* For more information, go to <http://frank.mtsu.edu/~music/calendar.html> or call 615-898-2493.

\*\* For more information go to <http://frank.mtsu.edu/~physics/Star%20Party.htm>.

\*\*\* For more information go to <http://www.mtsu.edu/~theatre>.

\*\*\*\* For more information go to [http://libarts.web.mtsu.edu/upcoming\\_events.htm#Badger](http://libarts.web.mtsu.edu/upcoming_events.htm#Badger).

\*\*\*\*\* Alumni 2008 art exhibit: 8 a.m.-4:30 p.m. weekdays on first floor of Tood Building. Closed Sept. 1 for Labor Day. For more information, call 615-898-5653.



# BET ON BLUE

## HOMEcoming 2008



File photo/MTSU Photographic Services

President Sidney A. McPhee, right, waves to the crowd during the 2007 Homecoming Parade. Alumna Seneca McPhee ('07) enjoys riding in the event with her father.



The Baby Raiders portion of the Homecoming Parade is a favorite for those walking and those watching.



Past homecoming queens help Emily Porter, with roses, celebrate in 2007.



File photos/MTSU Alumni Relations

Gale ('57), left, and Jonelle Prince, seated in the back of the bus, and Wayne Monks ('55) and Mary Sanderson ride across campus in a Golden Raiders event.

## Bet

## from Page 1

All shirts collected will be donated to a charity.

On Friday evening, graduates of the Class of 1958 are invited to attend the Golden Raider Induction Ceremony and Dinner at the Tom H. Jackson Building.

All alumni and friends are invited to the Chili Cook-Off at 5:30 p.m. on Friday, on the Murphy Center lawn, where chili will be served and judged. Participants either can enter a recipe or enjoy the food. Afterward, everyone can head to Murphy Center and watch student groups battle it out at the National Pan-Hellenic Council Step Show at 7:30 p.m.

The Office of Alumni Relations invites you to watch the Homecoming Parade at Mixer on Middle at The MTSU Alumni House, where a complimentary breakfast will be served starting at 9 a.m. Saturday. This party is open to all alumni, friends and fans, and has the best view of the parade on campus. Beverage bands may be purchased on the lawn for \$10.

Announcing the parade this year will be Chip Walters ('85), Tennessee Walking Horse National Celebration's director of public and media relations, and Nick Paranjape ('91), Fox 17's morning anchor.

Baby Raiders are always a highlight of the Homecoming Parade. We encourage Baby Raiders (and their parents or guardians) to participate by

meeting at Mixer on Middle and walking in the parade.

After the parade, head to Walnut Grove to tailgate. Tent City is a natural gathering place where you can get the latest news from your college and see old friends and professors. The Colleges of Graduate Studies, Honors, Basic and Applied Sciences, Business and Liberal Arts invite you to their tents starting at noon.

The 2008 Jennings A. Jones College of Business Reunion will be at Tent City. Be sure to stop by the Alumni tent in Walnut Grove where you can get MT tattoos, beads, shakers, and buttons to show your Blue Raider pride.

Cheer on your Blue Raiders as they take on the Louisiana-Monroe Warhawks in the homecoming game. Kickoff is at 2:30 p.m. at Floyd Stadium.

Tickets can be purchased through the Office of Alumni Relations for a discounted alumni general admission (end zone) rate of \$8 per ticket. Call our office at 800-533-MTSU to buy your discounted tickets.

There are many other activities offered during Homecoming Week. For a more detailed schedule, please refer to the 2008 Homecoming Calendar in this issue of *The Alumni Record*, visit [mtalumni.com](http://mtalumni.com) or call 800-533-MTSU (6878).

We can't wait to see you.



File photo/MTSU Photographic Services

Blue Raider fans whoop it up during the game.



## Schedule of events

### Friday, Sept. 5

#### Homecoming Kickoff

7 p.m., Alumni House

Homecoming groups and regulations are given to students. Enjoy music by The Compromise and a movie under the stars. Free food and fun, and open to students and university faculty and their families.

### Thursday, Oct. 23

#### Fight Song Competition

7 p.m., Murphy Center

Join in the fun as student organizations compete against one another to sing their way to homecoming victory.

### Week of Nov. 3-7

Trade in your team shirts at the **T-Shirt Swap**. Visit The Alumni House all week to exchange a T-shirt from another college to receive a free Homecoming 2008 T-shirt, available in sizes for adults and children, while supplies last. An annual event sponsored by the MTSU National Alumni Association and Student Government Association, the T-Shirt Swap promotes Blue Raider pride while helping those in need. All collected T-shirts will be donated to charity. For more information, contact the SGA at 615-898-2464. (Available during Office of Alumni Relations business hours, 8 a.m. - 4:30 p.m., Monday through Friday.)

### Friday, Nov. 7

#### Concrete Industry Management

#### Alumni Skeet Shoot and Reception

2 p.m., Big Springs Sports

The CIM program invites alumni to gather for a clay shoot that will support the program. There will be refreshments and prizes at the competition, with a reception to follow. Invitations will be sent via e-mail to those who have registered at [mtsu.edu/~concrete](mailto:mtsu.edu/~concrete). If you are not registered and you want an invitation, e-mail Sally Bradford ([bradford@mtsu.edu](mailto:bradford@mtsu.edu)) or call her at 615-494-7658.

#### Record Your MTSU Memories

Friday 1-4 p.m. and Saturday 8-noon

WMOT Jazz 89.5 Studio,

McWhorter Learning Resources Center

MTSU's National Public Radio member station, Jazz 89.5 FM, will be recording campus memories during homecoming weekend. Record your fondest memories of your days on campus, or interview others about their history at MTSU. Each participant will receive a CD of the interview. All interviews will be archived at the radio station, and excerpts may be aired during future Blue Raider sports broadcasts on WMOT. Recording times are limited, so reserve yours soon. Call 615-898-2800 for more details.

#### Golden Raider Reunion

4:30 p.m., Tom H. Jackson Building

Highlighting the class of 1958, Golden Raider registration begins at 4:30 p.m. followed by a campus tour and the 2008 Golden Raider Induction Ceremony Dinner. Contact the Office of Alumni Relations at 800-533-MTSU (6878) for more information.



#### College of Basic and Applied Sciences Alumni and Patron Homecoming Gala

6 p.m., Stones River Country Club

Reception, semiformal dinner, program and dancing. Proceeds in excess of the event will benefit College of Basic and Applied Sciences student scholarships. Registration and homecoming weekend package information can be found at [http://career.web.mtsu.edu/CBAS\\_HCgala.htm](http://career.web.mtsu.edu/CBAS_HCgala.htm).

#### Chili Cook-Off

7 p.m., Murphy Center Lawn

Blue Raider fans are asked to participate in the challenge by entering or judging this classic football season competition. The competition includes three different divisions: restaurants, student groups and alumni and friends. To register or for more information, contact Clarissa Blackwood at 931-629-7157 or [sgahome@mtsu.edu](mailto:sgahome@mtsu.edu).

#### NPHC Step Show

7:30 p.m., Murphy Center

Tickets available. Call Greek Life Office, 615-898-5812.

#### Alumni Band Concert

7:30 p.m., location TBA

Former members of university bands are welcome to join the Tennessee Valley Winds, a Murfreesboro community band, on stage to perform a "throughout the years" concert. The concert is free and open to the public. For more information, visit [mtalumni.com](http://mtalumni.com) or call 800-533-MTSU.

### Saturday, Nov. 8

#### Mixer on Middle Parade-Watching Party

9 a.m., MTSU Alumni House

Join us as we watch the 2008 Homecoming Parade from the best spot on campus. The lawn of the Alumni House will be filled with MTSU alumni and friends as we gather for an event that is uniquely MT. This year's party will feature Chip Walters ('85), the Tennessee Walking Horse National Celebration's director of public and media relations, and Nick Paranjape ('91), Fox 17's morning anchor, as parade announcers. Breakfast is free; beverage bands may be purchased on the lawn for \$10. For more information, call 800-533-MTSU or visit [mtalumni.com](http://mtalumni.com).

#### Annual Homecoming Parade

10 a.m.

The annual homecoming parade begins on Maney Avenue, following Main Street and Middle Tennessee Boulevard to Greenland Drive. Baby Raiders are encouraged to participate in the parade. For more information, visit [mtalumni.com](http://mtalumni.com).

#### Alumni Band Day

All alumni band members are invited back to campus to participate in the Homecoming Parade and perform hits with the Band of Blue. For more information, visit [mtalumni.com](http://mtalumni.com) or call 800-533-MTSU.

#### Tent City

Noon, Walnut Grove

Visit Tent City to see old friends and professors, take part in children's activities, and learn the latest MTSU news. Colleges participating include: Graduate Studies, Liberal Arts, Business, Honors and Basic and Applied Sciences.

#### MTSU Rugby Old Boys Game

11 a.m., MTSU Sport Club Complex, 2111 E. Main St.

Enjoy MTSU rugby at its best when alumni return to the field to take on the students. This year marks the 20th anniversary of the Old Boys Game. Visit [mtsurugby.com](http://mtsurugby.com) for more information.

#### Varsity Club Reception

Visit with former teammates in the Rose and Emmett Kennon Hall of Fame before the game. During your visit, you can see Blue Raider sports history come alive in the exhibits and video presentation in the Hall of Fame. Snacks and beverages will be provided for members and their families. Also open during the game for the benefit of former athletes is the Varsity Club open-air box overlooking the north end zone of Floyd Stadium. These events are open to Varsity Club members and families. Admission is free. Contact Jim Simpson at [jsimpson@mtsu.edu](mailto:jsimpson@mtsu.edu) for details.

#### Raider Walk

12:30 p.m., Horse Shoe in Walnut Grove

Join the Band of Blue, MTSU cheerleaders and Lightning to rally for your Blue Raider football team as it prepares to bring home a homecoming victory.

#### MT vs. Louisiana-Monroe

2:30 p.m., Floyd Stadium

Tickets available for \$17 (sideline), \$12 (general admission end zone) per person, and group tickets for groups of 20 or more are \$6 each. Call 1-888-YES-MTSU (937-6878) or visit [goblueraiders.com](http://goblueraiders.com).

#### Alumni Homecoming Queens and Kings

Former homecoming queens and kings will join in the festivities of the 2008 Homecoming Game. Participation is complimentary with the purchase of a game ticket. Call Alumni Relations at 800-533-MTSU to participate.

#### Al Wilkerson Scholarship Dance

9 p.m., DoubleTree Hotel

Hosted by the Black Alumni Society, this event is open to the public. Reservations are requested. Tickets are available for \$20 per person. Light hors d'oeuvres and a cash bar will be provided. Call 800-533-MTSU or e-mail [proydra@mtsu.edu](mailto:proydra@mtsu.edu) for more information.

## TAILGATE GUIDELINES

(Adopted August 2008)

MTSU welcomes all alumni, students, fans and friends to our campus and believes that athletic events are an important component of the overall educational experience.

Game-day activities help build a sense of community and offer an opportunity for social interaction. Our goal is to provide a safe, enjoyable environment for all guests and assure a pleasurable experience for everyone in attendance. All game-day activities should be conducted mindful of the campus surroundings and all who choose to participate in game-day activities are expected to conduct themselves in a responsible and respectful manner at all times.

The following guidelines have been established to assure that we maintain a high-quality, safe environment for those in attendance:

- Walnut Grove generally will open at 7:30 a.m. on game day. University-sponsored tailgate activities, including inflatables, begin 4.5 hours before kickoff. Weeknight game activities may be adjusted due to classes.
- Tailgate activities will cease two hours after the game unless otherwise announced and the area will close. MTSU officials will ask those failing to comply to leave the premises.
- Persons remaining in the tailgate area after the game has commenced will be encouraged to vacate the area to attend the game with the exception of one caretaker. Uniformed officers periodically will patrol through the area.
- Personal recreational vehicles will not be permitted in the Walnut Grove tailgate area. The placement of RVs must be coordinated through the MTSU Athletic Department.
- Parking is prohibited on the east side of Old Main Circle. At no time should vehicles park on or obstruct access to sidewalks.
- Glass bottles are prohibited. All beverages must be in nonbreakable cups.
- No large containers or community/common drink dispensers are permitted. Any device or activity used to increase the consumption of beverages is prohibited.
- No indoor-use furniture, i.e. couches or recliners, is permitted.
- Everyone is expected to clean their tailgate area before kickoff. The dumping of hot coals in the tailgate area or in trash receptacles is prohibited.
- Only portable radio/stereo units will be allowed. Any equipment requiring external-power sources is prohibited. Volume and the language in any and all audio recordings must be appropriate for all ages.
- The use of gas powered generators must be approved in advance.
- Stand-alone canopies in the Walnut Grove that exceed 12' x 12' must be approved in advance. Driving stakes or anchors into the ground is not permitted. Corporate tents are permitted in the designated tent area only (next to stadium) as approved by the MTSU Athletic Department.
- Platforms, stages and enclosed tents are not permitted in the tailgating area(s).
- Soliciting or hawking of wares, unless approved in advance by Student Unions and Programming and the Athletics Department, is prohibited. Only MTSU Athletics or their designated representatives will be allowed to sell merchandise in the tailgate area.
- For security reasons, all tailgate equipment should be placed in vehicles before kickoff. In particular, any valuable items should be appropriately secured. One "caretaker" may remain at the tailgate site during the game to safeguard belongings.
- Items left in the tailgate area once the area closes will be picked up and discarded.
- Any violations of these guidelines may result in termination of tailgate privileges and, as appropriate, criminal prosecution and/or action taken through the MTSU Office of Public Safety, the MTSU Dean of Students or the Murfreesboro Police Department.
- Requests for exceptions to these guidelines, other than student and student-organization reservations, can be made by calling the Athletics Department at 615-898-5322 or Student Unions and Programming at 615-898-2551.



File photo/MTSU Photographic Services

Alumna Mary Mason McCauley ('85), center, visits with her alumni parents, Peggy and Curtis Mason (both '59), during the 2007 Mixer on Middle at The Alumni House.



# CLASS NOTES

## 1950s

**Dr. Ralph Sheppard** ('51), Scottsboro, Ala., has retired from his dental practice after 43 years.

## 1960s

**Terry Bailey** ('62, '63), Culleoka, Tenn., has been inducted into the Washington County (Pa.) Sports Hall of Fame.

**Jim Gaines** ('69), La Jolla, Calif., is a tutor for Reality Changers Hispanic at Risk in San Diego, Calif.

**Robert Griffin** ('68), Cocoa, Fla., is the chief financial officer for Kennedy Space Center Federal Credit Union on Merritt Island.

**Ken Ross** ('62, '67), College Park, Ga., was inducted into the Georgia Athletic Coaches Association Hall of Fame on June 7, 2008.

## 1970s

**Kathleen Ferris** ('74, '80), Murfreesboro, was named *Daily News Journal* Person of the Year for 2007.

**Bruce Higdon** ('72), Murfreesboro, is one of nine cartoonists selected by the USO and the National Cartoonists Society to visit with and entertain wounded soldiers and their families at various medical facilities in the U.S. and Germany.

**Patrick Hundley** ('75), Edwardsville, Ill., is vice chancellor for University Relations at Southern Illinois University Edwardsville.

**Rev. Portia Wills Lee** ('78), Mableton, Ga., has published her sermon "Over-shadowed by the Power of God" in "Those Preaching Women: A Multicultural Collection."

**Teresa A. McCollum** ('78), Maryville, Tenn., is on staff for Congressman John J. Duncan Jr.

**Dr. Michael McDonald** ('79), Superior, Wis., is the assistant to the chancellor for affirmative action at the University of Wisconsin-Superior.

**Chuck Sellers** ('79), Nashville, Tenn., is a project manager for Commercial Industrial Construction.

**Judy Suiter** ('75), Tyrone, Ga., has published "The Sea of Change" and is founder and CEO of Competitive Edge Inc. in Peachtree City, Ga.

## 1980s

**Lesa Bonee** ('85), Plantation, Fla., is the head softball coach for Nova Southeastern University.

**Elvis N. Brandon** ('86), Old Hickory, Tenn., is dean of Allied Health at Volunteer State Community College.

**Betty Brock** ('80), Nashville, Tenn., is a show systems administrator for Alpaca Owners and Breeders Association.

**Ted Byrd** ('81), Evansville, Tenn., is a deputy and DARE officer for the Rhea County Sheriff's Department.

**Sandra Dawn Jones** ('82), Murfreesboro, is celebrating her 10th anniversary as owner of Jones Media.

**Yasin T. Kanakrieh** ('83, '92), Murfreesboro, is general manger of TnT Express.

**Holly Lentz Kleeman** ('87, '95), Philadelphia, Pa., is the president and chief executive officer of The Center For Emerging Visual Artists in Philadelphia.

**Brian Knox** ('87), Sussex, Wis., received two Paragon Awards from the Southeastern Wisconsin Chapter of the Public Relations Society of America for exemplary work.

**Dian Luffman** ('89), Nashville, Tenn., is the director of marketing for the health care technology company change:health-care.

**Kevin Poff** ('87), Franklin, Tenn., has joined the Wells Fargo nd Company commercial banking team in Nashville.

**Richard Ramko** ('89), Natick, Mass., is a partner with Ernst and Young.

**Donna J. Schmidt** ('83), Nashville, Tenn., is in the children's ministry of the People's Church.

**Carol A. Sherrill** ('86), Murfreesboro, is an operations manager for First Tennessee Bank.

**Sandra Small** ('81), Portland, Tenn., is a special education teacher for Robertson County Schools.

**Patty St. Clair** ('88), Nashville, is the communications director for the Epilepsy Foundation of Middle and West Tennessee.

**Becky Tribble** ('84, '99), Madison, Ala., is a teacher.

**Ray A. White** ('82), Greeneville, Tenn., is an adjunct professor in psychology and counselor with Walters State Community College. He also maintains a private practice, White and Associates.

**Jennifer Wilson** ('88), Sterling, Va., is a project manager for Learning Tree.

**Maureen Writesman** ('87), Eagleville, Tenn., is owner of Wilderness Foxes, [wildernessfoxes.com](http://wildernessfoxes.com).

## 1990s

**Judy Barnett** ('92), Brownsburg, Ind., is owner of Barnett's Legal Nurse Consulting.

**Thomas Bugg** ('95), Yokosuka, Japan, is a U.S. Department of Defense teacher attached to Commander of Fleet Activities Yokosuka.

**Micheal Burt** ('98, '02), Murfreesboro, is CEO/founder of Maximum Success.

**Joseph B. Cross** ('92), Columbia, Tenn., is a photojournalist for The Renaissance Center.

**Tricia K. Daniel-Madden** ('95, '03, '03), Chesapeake, Va., is a school psychologist for the Portsmouth Public Schools.

**Ben Dotson** ('93), Murfreesboro, is a head coach at Siegel High School.

**Rafael Eledge** ('94), Savannah, Tenn., owns and operates ShilohRelics.com .

**Wendi Ellis** ('95), Mount Juliet, Tenn., is the global director of career development at Willis Group Holdings.

**Lance Evans** ('96), Mansfield, Texas, recently returned from Iraq, where he served with distinction and was awarded numerous medals of honor. He has volunteered to return to Afghanistan in November with the 636th MI Battalion, 36th Infantry Division, where he will be serving a 12-month tour of duty.

**Gena J. Gilliam** ('99, '06), Nashville, Tenn., is a transportation planner for the Tennessee Department of Transportation.

**Daniel Lyn Graves II** ('91), Smyrna, Tenn., graduated from Nashville School of Law and is interning at Tidwell and Price.

**Jon P. Kemp** ('99), Gallatin, Tenn., is president of Concrete Pump Partners.

**Jonathan Malcolm Lampley** ('92, '97, '07), Dalton, Ga., is a professor of English at Dalton State College.

**SSG Brett Lashlee** ('91), Camp Butmir Bosnia, has been awarded the Defense Meritorious Service Medal while serving overseas in support of Operation Enduring Freedom.

**Doug Malan** ('98), Plantsville, Conn., has published his first book "Muzzy Field: Tales from a Forgotten Ballpark."

**Greg Merriman** ('92), Franklin, Tenn., has joined the Wells Fargo and Company commercial banking team in Nashville.

**Lee Meyers** ('90), Springfield, Va., is a lead ESOL teacher at Ravensworth School in Fairfax County, Va.

**Lt. Col. Marc Miller** ('90), Whiteman AFB, Mo., is the commander of the 29th Training Systems Squadron at Whiteman Air Force Base.

**Brandi Rigsby Peiken** ('96), Athens, Ga., is a TV host for Charter Media.

**Gregg Payne** ('90), Pembroke Pines, Fla., is a captain for Bombardier Flexjet on the Lear 40 and Lear 45 based in Ft. Lauderdale.

**Sarah Sanders** ('99, '01), Lynchburg, Tenn., is a teacher at Moore County Middle School.

**David Smith** ('93), Nashville, Tenn., was awarded the 2008 Shining Star Award for his commitment to volunteerism by Senior Citizens Inc.

**Melanie Spence** ('96), Murfreesboro, has opened an etiquette and consulting firm called The Etiquette Authority.

**Dr. Jeff Spurlock** ('97), Troy, Ala., received the Ingalls Award for Excellence in Classroom Teaching at Troy University.

**David Streit** ('95), Santa Cruz, Calif., is a self-employed audio engineer.

**Michael Stubblefield** ('97), Winchester, Tenn., is the principal broker for Keller Williams Realty in Manchester, Tenn.

**Christine C. Weems** ('91), Lake City, Fla., is a CPIS for the Florida Department of Children and Families.

**John West** ('99), Franklin, Tenn., is a senior manager for Deloitte & Touche.

**Dustin B. Winslow** ('94), Lombard, Ill., is a client relationship specialist for ADP.

**LaTonya Wynne** ('99), Murfreesboro, is a claim processor for State Farm Insurance.

## 2000s

**Darnell Levine Anderson** ('05), Nashville, Tenn., is on tour with Starbucks Coffee and can be seen around the country at local Starbucks Coffee houses. For a complete list of tour stops, go to [darnellelevine.com/starbucks.html](http://darnellelevine.com/starbucks.html).

**Lauren G. Anderson** ('03), Nashville, Tenn., is an engineering assistant for Hickory Hardware.

**Caryn Bailey** ('05), Antioch, Tenn., is an agent/owner of Bailey Insurance Agency.

**Sarah B. Baker** ('06), Dickson, Tenn., is a program assistant for the University of Tennessee Extension.

**Shelly Barnes** ('04, '06), Lebanon, Tenn., is an extension agent for the UT Extension Service in Wilson County.

**Justine Biola** ('06), Nashville, Tenn., is a clinical projects manager for the Sexual Assault Center.

**Ryan C. Blazer** ('04), Los Angeles, Calif., is music central for the William Morris Agency.

**Mandy Lee Bratten** ('03), Murfreesboro, is an enrolled actuary and an associate of the Society of Actuaries.

**Laura K. Brown** ('06), Murfreesboro, is a geometry teacher for Wilson County Schools.

**Mary Anna Brown** ('03), Nashville, Tenn., works for Lifeway Christian Store in their local store marketing department.

**Jason Cain** ('03), Austin, Texas, has completed his master of arts degree at Texas State University.

**Travis Camp** ('05), Mobile, Ala., is working on a master's degree in speech language pathology at the University of South Alabama.

**Keith Ryan Cartwright** ('01), Nashville, is a senior writer covering the top 45 bull riders in the world.

**James R. Cash II** ('07), Murfreesboro, is an auctioneer for Bob Parks Auction.

**Kris Cianci** ('00), Smyrna, Tenn., specializes in state and local government, specifically child welfare for North Highland Company.

**Michael Cook** ('04), Liberty, Va., earned his specialist in education degree from Liberty University.

**Jason Cox** ('05), Keizer, Ore., won two first-place journalism awards from the Oregon Newspaper Publishers Association and the Oregon/Southwest Washington Society of Professional Journalists.

**Regina Danielewicz** ('07), Murfreesboro, is a database processing specialist for Altair Data Resources.

**Jessica Dauphin** ('06), Nashville, Tenn., is a community affairs coordinator for Planned Parenthood of Middle and East Tennessee.

**T. Andrew S. DiBello** ('07), Friendswood, Texas, is the IT director for Dynamic Orthotics and Prosthetics.

**Sarah Esberger** ('08), Smyrna, Tenn., is an English teacher for Rutherford County Schools.

**Gregory Alan Feucht II** ('06), Roanoke, Va., is a second-year medical student at the Virginia College of Osteopathic Medicine.

**Randall W. Ford** ('00), Washington, D.C., is the communications director for the office of U.S. Rep. John Tanner.

**Paul Fulcher** ('07), Astoria, N.Y., is an equity analytics specialist for the Bloomberg Company in New York, N.Y.

**Harry Dan Fuller Jr.** ('05), Tupelo, Miss., is a congressional field representative for Congressman Travis W. Childers.

**Sara Gabbard** ('07), Murfreesboro, is a communications associate for Union Sportsmen's Alliance.

**Danielle Gauthier** ('06), Nashville, Tenn., is a research assistant for Vanderbilt University.

**Timothy Grace** ('07), La Vergne, Tenn., is an inside sales representative for ServiceSource.

**Brandon Gwinn** ('08), New York, New York, is attending NYU's graduate musical theater writing program, and his play "Underwear," has been selected for presentation at the New York International Fringe Festival.

**Dwain A. Haley** ('05), Los Angeles, Calif., is a public relations account executive for Bob Gold and Associates.

**Bethany G. Hall** ('06), Murfreesboro, is a GIS analyst for Rutherford County GIS.

**Nick Harris** ('00), Spring Hill, Tenn., has opened a law office, Nick Harris, PLLC, in Franklin, Tenn.

**Blake Healy** ('04), Los Angeles, Calif., and his band Metro Station's current single, "Shake It," has reached gold status.

**Jocelyn Howard** ('02), Atlanta, Ga., is an audiologist for Audiological Consultants of Atlanta.

**Emily Humphries** ('07), Nashville, Tenn., is the owner and operator of Simply Yours Weddings and Etc.

**Gretchen Jenkins** ('08), Astoria, N.Y., is a student at New York Law School.

**Derrick Johnson** ('05), Pickerington, Ohio, is a sales manager for Permobil.

**Rebecca Johnson** ('04), Pickerington, Ohio, is an accounts representative for Benchmark Bank.

**Tim Ketavongsa** ('04), Deerfield Beach, Fla., is a plant manager for Continental Florida Materials.

**Elizabeth D. Kreis** ('06), Cordova, Tenn., is a registered nurse for The Church Health Center.

**Greg Lemon** ('02), Franklin, Tenn., is president of Axis Accounting Systems.

**Nathan M. Lux** ('02), Murfreesboro, is a music and media coordinator for the Tennessee Film, Entertainment and Music Commission.

**Angela Mackie** ('06), Lebanon, Tenn., is a business analyst for Bridgestone Americas Holding, Inc.

**Sara E. McWilliams** ('07), Collinwood, Tenn., is an assistant coordinator of school health for the Wayne County Board of Education.

(See 'Class,' Page 7)



# Educating generations of students

## New alumni association president: ‘Our purpose is to represent and serve you’

I am honored to have the privilege to serve as your MTSU National Alumni Association president.



Reed

Middle Tennessee State University has been an important part of my family’s life for three generations. The beginning of our family support for this facility began with my great-grandfather driving my grandmother from Eagleville to Murfreesboro in a horse and buggy to attend Middle Tennessee State Teachers College. This university has educated

past generations and continues to educate present members of the Crosslin/ Victory families. My parents always have encouraged our family members to follow their example and be passionate in their support of MTSU.

I encourage you to visit our ever-changing campus. We welcome input and provide many ways for you to become involved in your university. Our purpose is to represent and serve you.

Please contact the Office of Alumni Relations to give us your updated information so we can stay in contact with you.

With your help and support, we will have a productive year for the association and for our uni-

versity. You can come home. MTSU welcomes you home with open arms. I challenge you to make this the year to reconnect with your alma mater.

Mary Esther Reed

2008-09 MTSU National Alumni Association President  
Mary Esther Reed is a 1992 graduate living in Smyrna, Tenn., with her husband, Britt ('93), and son, Parker. She has been the owner of The Learning Circle in Murfreesboro since 2002.

## Baby Raiders

**Ella Jean Arnold**, born Feb. 19, 2008, to Bethany and **Jeremy Arnold** ('99) of Manchester, Tenn.

**Peyton Brooke Barbarick**, born Dec. 28, 2007, to **Becky Keltner** ('96) and Steve **Barbarick** of Brentwood, Tenn.

**MaKyla Cari Boggus**, born Dec. 17, 2007, to **Monica** ('94) and Michael **Boggus** of Chattanooga, Tenn.

**Avery Bratton**, born Dec. 17, 2007, to **Audrey Chamberlain** ('06) of Burns, Tenn.

**Ava Grace Carvalis**, born Aug. 30, 2007, to **Sarah E.** ('97) and Ken **Carvalis** of St. Petersburg, Fla.

**Alexis Isabella Cipriano**, born April 21, 2008, to Melissa and **John Cipriano** ('91) of Irving, Texas.

**Grant Cline**, born Sept. 13, 2007, to **Jessica Cline** ('03) of Murfreesboro.

**Danny Clay Cole**, born Nov. 28, 2007, to **Whitney L.** ('05) and **Brett Cole** ('05) of Columbia, Tenn.

**Jude Vincent Cook**, born May 13, 2008, to **Leyla Gazdik** ('98) and Christopher **Cook** of Arlington, Va.

**Allison Blair Crass**, born June 3, 2008, to **Kristi** ('04) and **Matt Crass** ('02) of Murfreesboro.

**Abby Claire Crider**, born Feb. 29, 2008, to **Adam Crider** ('00) of Medina, Tenn.

**Kaden Stone Del Valle**, born April 30, 2008, to **Jaime** ('03) and **Dustin Del Valle** ('02) of Orlando, Fla.

**Jamie Renee Fussell**, born Oct. 10, 2007, to **Teresa** ('93) and Brent **Fussell** of Burns, Tenn.

**Ava Katherine Goggin**, born June 3, 2008, to **Jennifer** ('96) and **Christopher Goggin** ('96) of Hendersonville, Tenn.

**Karmen Louise Harris**, born June 1, 2008, to **Kelli** ('03) and **Jim Harris** ('03) of Bristol, Va.

**Lauren Elizabeth Harris**, born May 1, 2008, to **Dana** ('04) and **Nick Harris** ('00) of Spring Hill, Tenn.

**Maggie Elizabeth and Connor Andrew Hayes**, born Aug. 22, 2007, to Tommie Marie and **Bo Hayes** ('03, '05) of Oxford, Ohio.

**Georgia Katherine Hazelwood**, born May 11, 2008, to Amy and **Brian Hazelwood** ('96) of Columbia, Tenn.

**Elly Caroline Huckleby**, born Aug. 24, 2007, to **Melissa D.** ('95) and Phillip **Huckleby** of Robbins, Tenn.

**Will Julian Jenkins**, born April 10, 2008, to **Alysia** ('99, '02) and Brad **Jenkins** of Murfreesboro.

**Aaron Todd Keller**, born Feb. 24, 2008, to **Katrina** ('97) and Von **Keller** of Murfreesboro.

**Scotlyn Elizabeth Kemp**, born March 10, 2008, to Amy and **Jon Kemp** ('99) of Gallatin, Tenn.

**Lawson Ray Lee**, born May 12, 2008, to **Tiffany** ('03, '05, '07) and Brannon **Lee** of Murfreesboro.

**Solomon George Nickolai Lux**, born May 1, 2008, to **Christi** ('03) and **Nathan Lux** ('02) of Murfreesboro.

**Abbey Claire McClain**, born Jan. 7, 2008, to **Carrie** ('99) and Allen **McClain** of Winchester, Tenn.

**Micah Marrell McCollough Jr.**, born March 28, 2008, to **Crystal** ('03) and Micah **McCollough** of Newnan, Ga.

**Claudia Louise Mineo**, born June 26, 2007, to **Jennifer** ('99) and **Antonio Mineo** ('96) of Franklin, Tenn.

**Savannah “Kaiden” Moore**, born June 21, 2008, to Jessica Alice and **Kellon Moore** ('02) of Woodbridge, Va.

**Lydia Kathleen and Claire Isabell Parkerson**, born Feb. 7, 2008, to **Amanda** ('01, '03) and **Paul Parkerson** ('01) of Murfreesboro.

**Jerry Brooks Pennington**, born March 31, 2008, to **Ashley Boney** ('95, '00) and **Mark Pennington** ('96) of Knoxville, Tenn.

**Katherine Grace Ramko**, born April 26, 2008, to Rebecca and **Richard Ramko** ('89) of Natick, Mass.

**Rogue Elijah Johnson Schaerer**, born Oct. 24, 2007, to **Jennifer** ('05) and **Dustin Schaerer** ('01) of Vancouver, Wash.

**Carolyn Elizabeth Sims**, born April 24, 2008, to **Deborah** ('94) and Joe **Sims** of Madison, Ala.

**Dinah Aminah Stephen**, born Feb. 28, 2008, to **Rhonda** ('95, '96) and Godwin **Stephen** of Covington, Ga.

**Ella Mackenzie Stiles**, born Dec. 4, 2007, to **Emily** ('03) and **Nicholas Stiles** ('02) of Southaven, Miss.

**William Edward Stokes**, born Dec. 12, 2007, to **Barbara** ('02) and **Edward Stokes** ('99) of Summerville, S.C.

**Laila Delaney Underwood**, born Jan. 29, 2008, to **Amy** ('98) and **Bradley David Underwood** ('00) of Woodbury, Tenn.

**Victoria Leighanna Xiang Whaley**, born Jan. 26, 2007, adopted Jan. 20, 2008, by **Cindy** ('92) and **Chris Whaley** ('91) of Harriman, Tenn.

## In Memoriam

*MTSU and the Office of Alumni Relations extend deepest sympathy to the families and friends of alumni who have passed away.*

### 1930s

**Paschal C. Shelton Sr.** ('31), Christiana, Tenn., died May 12, 2008.

### 1950s

**Kathryn Mitchell Harris** ('55, '57), Lebanon, Tenn., died Jan. 12, 2008.

**James Higgins Jr.** ('59), Tullahoma, Tenn., died May 19, 2008.

**Billie Jo Sloan** ('57), Huntsville, Ala., died June 7, 2008.

**Wayne D. Wilks** ('56), North Richland Hills, Texas, died Dec. 16, 2007.

### 1960s

**Eddie Hagood** ('60), Burlington, N.C., died March 30, 2008.

### 1970s

**William Gray** ('76), Marble Hill, Tenn., died March 2, 2008.

**James McBride** ('74), Harlingen, Texas, died April 16, 2008.

### 1980s

**Perry James Palmer** ('81), Hixson, Texas, died May 9, 2008.

### 2000s

**Lisa Anne Smith** ('02), Eagleville, Tenn., died March 19, 2008.

## Class

**Andrea Miller** ('05), Harlem, Ga., is a human resources generalist for Doctor’s Hospital of Augusta.

**Susan Miller** ('00), West Columbia, Texas, is the site manager for the Varner-Hogg Plantation State Historic Site.

**Kristin M. Minder** ('07), Hermitage, Tenn., is a promotions coordinator for WJXA Mix 92.9.

**Jaclyn Ohman** ('06), Sarasota, Fl., is a certifying agent for the Florida Green Building Coalition.

**Michael Peters** ('03), Silver Spring, Md., is the vice president of technology for Plus Three.

**Jenny E. Reid** ('06), Shelbyville, Tenn., is a teacher at Thomas Intermediate School.

**Markial Ribbins** ('05), Antioch, Tenn.,

is a graduate student at Strayer University studying for a degree in health services administration.

**Amanda Saad** ('02), Nashville, Tenn., is a senior public relations manager for the Tennessee Performing Arts Center.

**Jennifer E. Segel** ('06), Acworth, Ga., is a teacher for the Cobb County School District.

**Jennifer Powers Smith** ('04), Murfreesboro, is a registered dietitian for the Rutherford County Health Department.

**Audrey Starr** ('05), Erie, Pa., is a publications officer and editor for Gannon University.

**Jennifer Sturgeon** ('05), Nashville, Tenn., is a Lean Six Sigma Blackbelt for Cardinal Health.

**Stephen Thate** ('00), Round Lake, Ill.,

is a clinical nurse manager for General Surgery.

**Lisa M.E. Tinitali** ('02), Olympia, Wash., is technical support for Eden Advanced Pest Technologies.

**Shannan R. Tittle** ('05), Lebanon, Tenn., is a teacher at McClain Christian Academy.

**Richard Trew** ('01), Murfreesboro, is a wholesale executive for Fifth Third Bank.

**Noah Ura** ('07), Knoxville, Tenn., is a production supervisor for Gerdau Ameristeel.

**Oscar Utterstrom** ('05), Nashville, Tenn., has released his debut album, “Home”.

**Damaris V. Venable** ('07), Smyrna, Tenn., is a marketing coordinator for Wild About Smiles.

**Lisa M. Walters** ('06), Murfreesboro, is an auctioneer for Bob Parks Auctions.

**Aimee L. Walthaw** ('03), Greensboro, N.C., is an early intervention specialist for the state of North Carolina.

**Cedric Walthaw** ('00), Greensboro, N.C., is the director of strength and conditioning at North Carolina A&T University.

**Amanda C. Washington** ('02), Augusta, Ga., is C.C.O. for Elemental Innovations.

**Rhiannon M. Wilson** ('00), Antioch, Tenn., is a teacher for the Metro Nashville Public School System.

**Erin M. Yeldell** ('08), Murfreesboro, is a public relations coordinator for Middle Tennessee Medical Center.





MTSU Alumni Relations photos

Diane Tribble Fisher ('74) gets up close and personal with Ziggy while touring the Miller Coliseum Horse Science Complex.



Martha Wiser Scarbrough ('64, '67), Gary Winton ('05) and Alice Huskey experience the Mother Church of Country Music from the stage of the Ryman Auditorium.



Karen Monefeldt Caton ('65) and Louise Monefeldt Bastedo ('65) meet country music superstar Trace Adkins backstage at the Grand Ole Opry.

# Fun from Page 1

morning in the Honors College with Dr. Lisa Pruitt from the Albert Gore Sr. Research Center. After she traced the history of MTSU, John Lodl ('98, '04) of the Rutherford County Archives shared hints and sources for genealogy research.

After a quick trip on the Raider Xpress, the class was recruited to play football for the Blue Raiders as they toured Kennon Sports Hall of Fame, the football locker room, impressive workout facilities and Horace Jones Field. After Coach Rick Stockstill shared his vision for the team's future, the group enjoyed a tail-gate lunch in the press box.

The emphasis switched from football to horseshoes when the class traveled to Tennessee Miller Coliseum. Many were amazed by the world-class facility and proud that it is part of MTSU. Their wonderment continued as Dr. Rhonda Hoffman educated everyone on what happens in the Horse Science Complex.

An RC Cola and a Moon Pie were a welcomed afternoon snack before the class boarded buses for a campus tour and great dinner at The Front Porch Café, where Don Witherspoon ('64) was elected president of the class.

Two great sessions kicked off Friday. First, Bill Shacklett ('73) and Tom and Gloria Christy ('71) taught how to organize and store old family photos, file digital images and restore family movies. During the second session, Robert K. Oermann, nationally recognized as the "dean of Nashville's entertainment journalists," traced the history of middle Tennessee's music culture during an amazing presentation that focused on how Nashville became Music City.

The graduation luncheon was held at the Heritage Center of Murfreesboro. Melissa Zimmerman from the center and Richard Gabel ('80), director of Main Street Murfreesboro, informed the group of restoration efforts in Middle Tennessee and explained the partnership between the Heritage Center and

MTSU. After graduation, the class boarded a motor-coach headed toward Nashville for a celebratory field trip to the Ryman Auditorium, where staff gave the Alumni Summer College students VIP treatment as the group toured and heard stories of the historic building. Everyone was given the chance to stand on the stage and some took the

opportunity to sing. To conclude the celebration, the alumni rolled into the Grand Ole Opry feeling like country music stars on a tour bus. Pete Fisher ('87), Opry general manager, made them feel at home by offering backstage access during the show. Some even met Opry stars Trace Adkins, Jimmy C. Newman, Connie Smith, Marty Stuart and Little Jimmy Dickens.

Alumni Summer College fulfilled its purpose of reconnecting MTSU alumni with each other, the university and the community. It is sure to become a favorite annual tradition on campus and with alumni and friends across the country. Mark your calendar for Alumni Summer College 2009 to be held June 24-26, with the theme How Things Work.

For more information, go to [mtalumni.com](http://mtalumni.com).



Amy Maze ('97) and Carolyn Boatright Reeves ('63, '72, '91) check out the view from the 50-yard line of Horace Jones Field during the First Down Football Tour at Alumni Summer College.

## 2008 MTSU FOOTBALL SCHEDULE

Aug. 28 6:30 p.m. TROY* (ESPN Reg.)	Nov. 22 2:30 p.m. NORTH TEXAS* (Salute to Armed Services/Veterans)
Sept. 6 6 p.m. MARYLAND (CSS)	Dec. 3 6 p.m. at Louisiana-Lafayette*
Sept. 13 TBA at Kentucky	Dec. 21 New Orleans Bowl (ESPN)
Sept. 20 6 p.m. at Arkansas State*	
Sept. 30 7 p.m. FLORIDA ATLANTIC (ESPN2; "Black-Out" night)	HOME games are in bold (HC) — Homecoming
Oct. 11 6 p.m. at Florida International*	* Sun Belt Conference game
Oct. 18 TBA at Louisville	TBA — Times to be announced
Oct. 25 TBA at Mississippi State	For ticket information, visit <a href="http://goblueraiders.com">goblueraiders.com</a> .
Nov. 8 2:30 p.m. LA.-MONROE* (HC)	
Nov. 15 Noon at W. Kentucky (CSS)	

**ALUMNI Legacy GOLF CLASSIC**

to benefit a newly established scholarship for children of MTSU alumni

September 30 ■ Champions Run

Nike golf shoes for every player!

Information and registration info: [www.mtalumni.com](http://www.mtalumni.com)

**MIDDLE TENNESSEE STATE UNIVERSITY**

**LUNCH with the President**

Join us in the following cities for a weekday luncheon as MTSU President

*Dr. Sidney L. McPhee*

shares MTSU updates and future plans.

Nashville

Memphis

Chattanooga

Knoxville

Columbia

Times, locations and reservation information available on our Web site, [www.mtalumni.com](http://www.mtalumni.com).

*Limited seating available.*