

NEWS & information

FROM THE PRESIDENT

Dr. Sidney A. McPhee

*Welcome to the
Fall 2019 Semester!*

As always, I appreciate all you do to support the goals and objectives of our great University.

In this newsletter, I want to **highlight just a few achievements** from this past year and provide some information on some of our plans for the future. I welcome your feedback and comments. Please contact me at Sidney.McPhee@mtsu.edu.

I also invite you to check out my blog, available at mtsu.edu/President, for updates and information from my office.



True Blue!

DR. SIDNEY A. MCPHEE

**MIDDLE
TENNESSEE**
STATE UNIVERSITY.



PRINCETON REVIEW PUTS MTSU AMONG TOP 13%

MTSU was recently named a top college according to *The Princeton Review* in the newest edition of its college guide, *The Best 385 Colleges*, a designation only 13% of America's four-year colleges have earned. MTSU also received honors as a top college in the Southeast Region.

This is the best showing by MTSU in the annual review. We are among only six new institutions making the national Best 385 College list. In previous years, we have only appeared on the Best of the Southeast Region list.

continued on page 2 ▶

STUDENT SUCCESS

Launched in 2013, the Quest for Student Success radically rethought the University's **approach to student attrition.**

Working collaboratively, MTSU has overhauled student advising, developed fresh options for academic help, and redesigned courses that are traditional stumbling blocks to graduation.

At the same time, we're using predictive analytics—an approach more commonly

continued on page 3 ▶



Student Life	5
Admissions	6

Campus Planning, Parking, and Transportation	10
Academic Affairs	13

Technology	19
Research and Graduate Studies	20

International Relations	21
Development	23

MT Athletics	26
Budget	31

MTSU named top U.S. college

continued from page 1

The *Princeton Review* does not rank schools overall 1–385 on the list. This list appears in alphabetical order. The full list is available at:

princetonreview.com/college-rankings?rankings=best-385-colleges



MTSU is the only Tennessee locally governed institution on the list and the only public institution other than the University of Tennessee–Knoxville noted in the state. MTSU’s listing can be found at:

princetonreview.com/college/middle-tennessee-state-university-1022786?ceid=best-colleges

The 84-question survey that serves as the basis for the list asks students about their school’s academics/administration, campus life, student body, and themselves. Students answer by selecting one of five answer choices on a grid. The rankings in this edition are based on surveys of 140,000 students (about 363 per campus on average) at the 385 schools in the book during the 2018–19 and/or previous two academic years.

Here’s what students said about us in the survey. My deepest thanks go out to all faculty members and staff at MTSU for their key roles in achieving this designation.

Academics

Middle Tennessee State University has become a go-to choice for those wishing to receive a quality and affordable education close to home. The school offers more than 140 degree programs for undergraduates—some “that are not seen in other universities, like animation.” One student says, “You can literally major in fermentation and learn about the process of brewing beer.” Students find these “highly specialized programs are closely tied to their industry, which means **really good job placement.**” The on-campus growth doesn’t stop there: “A staggering amount of resources [are] available to students, [ranging] from research programs to counseling services to 3D printing.” Furthermore, students cite “pretty good technology [being] available for students to use or borrow, with updated versions of most programs.”

easy: “There are a lot of programs in place to help you, such as free tutoring,” and students also have “plenty of opportunities to gain a mentor” for more focused guidance during their college careers. Many say this “advising is top notch,” and that MTSU takes the time to “foster an environment of care for each and every student.” Overall, students agree: “This school is amazing, and it is **such a hidden gem.**”

Student Body

“At a school as large as MTSU, you see all types [of students] from different ends of the spectrum” as everyone “is very open to whoever comes into the school.” Here you’ll find “a mixed bag of fresh-out-of-high-school students, . . . parents, . . . returning military veterans, and foreign students.” No matter who they are, people at Middle Tennessee are “extremely friendly

**The Princeton Review explains
the basis for each of its ranking lists
and its survey methodology at:
[princetonreview.com/
college-rankings/ranking-methodology](http://princetonreview.com/college-rankings/ranking-methodology)**

As far as professors go, they “like to be on a first-name basis” with students and often “make it a point to get to know you.” Students call faculty “very helpful and fair” and “thorough in every aspect of the subject matter.” One student shares, “A professor of mine teaches by walking around to every individual student and **making sure they understand the subject matter.**” They’re also “willing to circle back around if anyone in the class gets off track.” Students who do find themselves needing extra assistance with coursework or concepts can rest

and inclusive,” “pretty laid back,” and “nice, courteous and really helpful.” “Though everyone is different here, it is still easy to find people like yourself [who are] studying the same things or taking similar classes,” a student says.

Campus Life

“The campus is big” but feels like a “comfortable and home-like school” environment where people “sit on the quad by the library and talk with their friends, play music, and skateboard.” **True Blue! mtsu**

Student Success continued from page 1

associated with health care than higher ed—to fight attrition in a highly surgical way.

Predictive data can help **identify students who are at statistical risk** of attrition even if they don't fit into a traditionally “at-risk” population. Armed with this knowledge, our faculty and advisors can watch them to spot any problems early and get them back on track.

While MTSU has always targeted at-risk populations for support, the Office of Student Success continues to work to **boost every student's chance to succeed**.

Here are a few quick updates and reminders related to our ongoing focus on student success.

Student Information and Analytics Platform for Faculty/Staff

Looking for a source of student information that provides intuitive, seamless navigation from basic student information to data visualization to transcripts, academic progress, and other important documentation? What about advanced search capabilities that permit identification of



Brian Hinote

specific student subpopulations and summarizing valuable departmental and program information? If so, then you should log on to the EAB Navigate platform today. Navigate is a student information, reporting, and analytics platform at MTSU that connects colleagues from all over campus and permits virtually unprecedented information-sharing through notes, reporting, and other valuable student data. Over the past academic year, students and other campus colleagues have created over 100,000 appointments and other pieces of documentation in Navigate. Log on at mtsu.campus.eab.com with your MTSU FSA credentials.

For more information, introductory or specialized training, or help with login credentials, contact Brian Hinote, associate vice provost for data analytics and student success, at brian.hinote@mtsu.edu or at phone extension 2488.

STAR: A New Program for Incoming Freshmen

Building upon the success of the Scholars Academy, the University's long-time early arrival program, the

continued on page 4 ➤



Since 2013, the four-year completion rate has increased from 19% to 30.2%.



MTSU students study together outside the Student Union Building.

Student Transition and Academic Readiness (STAR) program was established for all incoming freshmen. The STAR program is welcoming its first class this month.



Brelinda Johnson

Under the leadership of Brelinda Johnson and staff, the program offers students the opportunity to accelerate their assimilation processes by moving into their fall semester residence hall, creating relationships with like-minded peers, and learning more about the University through a series of workshops in a conference-style format. The program is expected to assist more than 200 incoming students in its first year of operation.

Scholars Academy

Returning to its roots, the Scholars Academy program is expected to host 200 participants in its two-week early arrival program. Developed to support students who are Pell-eligible, first-generation, and from underrepresented populations, the program employs 50 peer mentors to assist in supporting participants during their first year and beyond. Through partnerships with University Studies and the College of Basic and Applied Sciences, participants receive prep work in study skills, math, and the sciences.

Learner Support

Tutoring and Supplemental Instruction programs continue to offer important augmentative support of classroom instruction. Utilization of both programs is now being tracked and recorded in the Navigate platform, providing an opportunity to better understand and support student needs. During the 2018–19 academic year, there were more than 12,000 tutoring and study sessions.

27 Certified in MTSU's Advisor Mastery Program

Two years ago, a group of dedicated academic advisors began meeting to devise a comprehensive professional development plan. Through their efforts, the Advisor Mastery Program (AMP) was created and implemented. AMP provides advisors with access to a wide-ranging series of professional development and training opportunities.

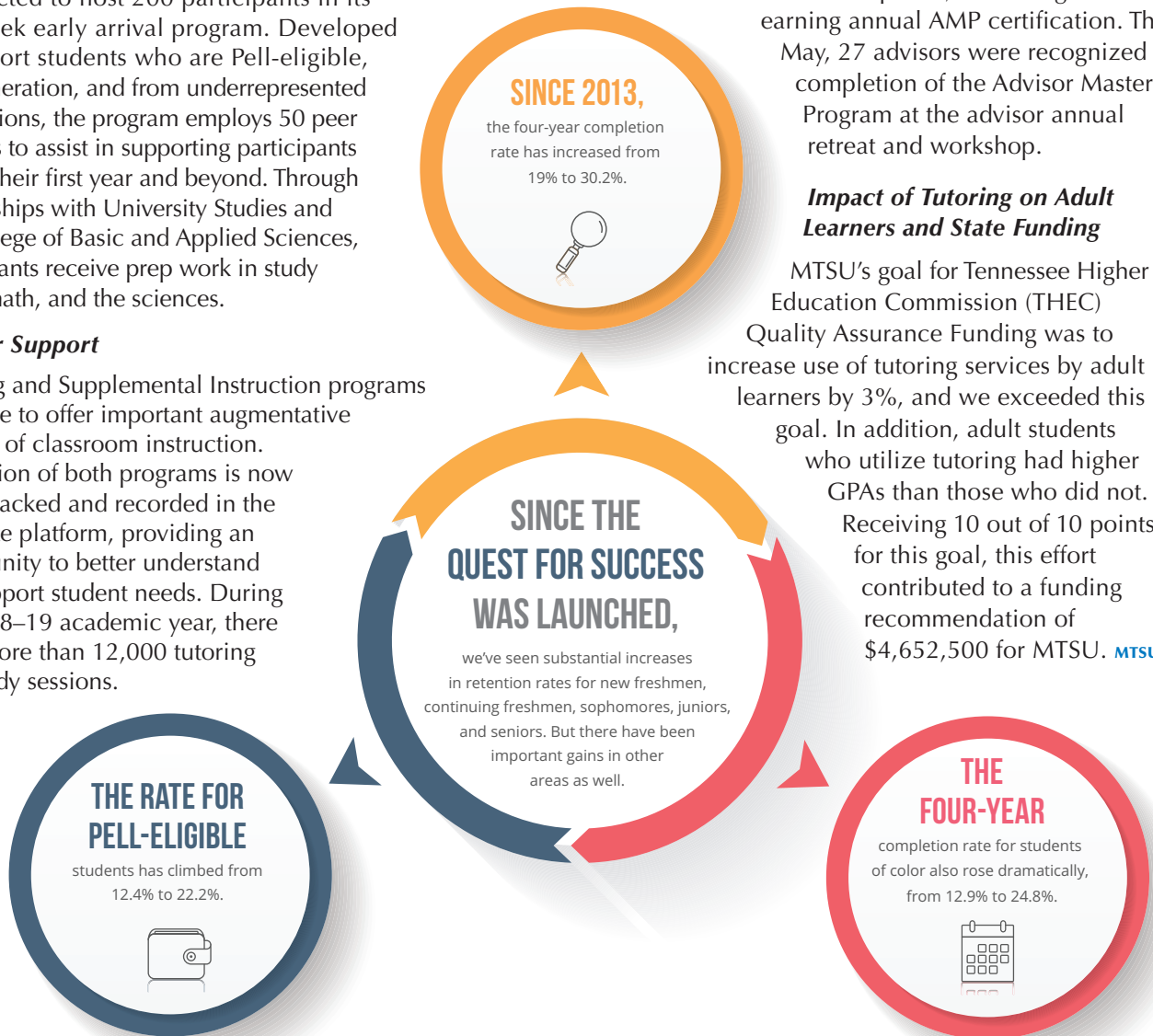
In academic year 2018–19, advisors were a part of:

- ▶ 8 professional development sessions, including national speakers, attended by 155 advisors
- ▶ 11 iShare sessions with 103 advisors participating
- ▶ 6 NACADA webinars viewed by 59 advisors

Through their participation in these sessions, advisors earn points, with the goal of earning annual AMP certification. This May, 27 advisors were recognized for completion of the Advisor Mastery Program at the advisor annual retreat and workshop.

Impact of Tutoring on Adult Learners and State Funding

MTSU's goal for Tennessee Higher Education Commission (THEC) Quality Assurance Funding was to increase use of tutoring services by adult learners by 3%, and we exceeded this goal. In addition, adult students who utilize tutoring had higher GPAs than those who did not. Receiving 10 out of 10 points for this goal, this effort contributed to a funding recommendation of \$4,652,500 for MTSU. [MTSU](#)



STUDENT LIFE

Research tells us that the **first six weeks of the semester are critically important** for student success. Students need to connect academically in the classroom, and they need to connect socially through out-of-the classroom activities in

The formula for student success involves more than just ensuring students enroll, make it to class, fulfill course obligations, and get consistent and proper academic advising on their journey toward a degree. After all, college life is more than just books and classrooms.

order to feel like they belong at MTSU. That's why all of our students, and especially freshmen, are being asked to attend a variety of Connection Point events. During 2018–19, over 80% of first-semester freshmen participated in at least one Connection Point activity. Participation in this program is also positively linked with academic performance; MTSU students not attending any events earned a significantly lower grade point average than active Connection Point participants. The **highest GPAs correlated with those students attending the greatest number of events:** Students attending one–two events earned an average 2.74 GPA; those attending three–four events averaged a 2.77 GPA; students participating in five–six events had a 2.81 average GPA; and those taking part in seven or more events earned an average 2.83 GPA.

This year's **“There’s No Place Like Home”** theme for Connection Point underscores our efforts to provide a campus environment that feels like each student’s second home. During the 10 freshman CUSTOMS orientation sessions this summer, staff from the Division of Student Affairs talked with students about the Connection Point program and the importance of participating in at least six events by Sept. 6. In addition to meeting new people and having a great time, students will receive an event-inspired button designed especially for each activity and the opportunity to win some great prizes.

Students will need to download an Event Pass and bring their mobile devices with them to the activities/events so Student Affairs staff can record their attendance each time. This allows the staff to monitor our students’ involvement and ensure they are connecting with our community. Students who are not



Connection Point events like Bash the Rec get students involved on campus.

getting involved will be contacted to determine how we can assist them to become more active in the campus community.

- ▶ **Dinner and a Carnival** kicks off Connection Point activities at 6 p.m. Friday, Aug. 23, on the Student Union Commons.
- ▶ Saturday, Aug. 24, will mark MTSU’s **18th University Convocation** at 5 p.m. in Murphy Center. This year’s summer reading selection is *Educated: A Memoir* by Tara Westover, who will be the keynote speaker for Convocation. Born in Idaho to a father opposed to public education, Westover was 17 the first time she set foot in a classroom. Lacking a formal education, she began to educate herself. Her quest for knowledge transformed her, taking her over oceans and across continents.

continued on page 8 ▶



Educated: A Memoir author Tara Westover will speak at the Aug. 24 Convocation.

ADMISSIONS

MTSU staff work tirelessly both to sustain our ongoing operations and to fuel our plans for growth and improvement by **attracting the best and brightest young scholars** from across Tennessee, the region, and the world to Murfreesboro. But recruitment is everyone's job, because we want to make sure top students in Tennessee continue to Choose True Blue.



MTSU is the No. 1 choice of transfers who attended community college tuition-free through the Tennessee Promise.

This year's program review of the undergraduate Admissions office provided a great chance for us to review best practices with the help of consultants from the American Association of Collegiate Registrars and Admissions Officers. We are attending to their suggestions regarding updates to our campus tour video and how we can achieve even greater integration in our electronic and hard-copy communications plan. Of course, we also appreciated their recognition of the many ways our Admissions staff excel, especially their comments about the strength of our personal approach to working with applicants and the timely and

efficient way we process applications and communicate with our newest students. We appreciate the good work of both our professional and student staff in undergraduate Admissions and are happy to have it **recognized by nationally respected experts** in the field.

Enrollment numbers for new freshmen and transfers are strong—and demonstrate the enormous impact of our multi-year strategic plan to increase the value of guaranteed scholarships for our most academically talented applicants. As you know, beginning this fall, the Presidential Scholarship (ACT 25–29 with a 3.5 GPA) was increased to a total award of \$4,500 per year for four years—a value of \$18,000! Our Admissions recruiters are now promoting the good news that effective Fall 2020 we will be **initiating a new True Blue Scholarship**, which will award \$2,000 per year to entering freshmen with ACT scores of 23–24 and a 3.5 GPA.

Meanwhile, MTSU is **tops in Tennessee for the number of transfer students** who took advantage of the Tennessee Promise free community college tuition program. Recent data from the Tennessee Higher Education Commission shows MTSU received 21.5% (542) of the 2,528 students who took advantage of the program to seek an associate degree and then entered a four-year university. Our partnership with Motlow State Community College is also the most

productive relationship between a two-year college and a four-year institution. Motlow sent MTSU 255 of its students, according to THEC's 2019 report on the Tennessee Promise.

Last, our key annual recruiting event, the True Blue Tour, gets bigger and better each year. Joining me on these **recruitment tours to various locations** throughout Tennessee—and even beyond the state's borders to Alabama, Georgia, and Kentucky—are top University administrators, deans from all of our academic colleges, and counselors from Financial Aid and Admissions. The end result is a wonderful opportunity for prospective students and their parents to hear firsthand from MTSU representatives in their own backyards, as well as get important information about admission, financial aid, and scholarships. This is a prime opportunity to explain the unique educational experience MTSU offers. [MTSU](#)

2019 True Blue Tour

All counselor luncheons at 12:30 p.m. and student receptions at 6 p.m. local time.

Rutherford County

@ MTSU Student Union Ballroom

Thursday, Sept. 19

Counselor/Community College Staff Luncheon

Huntsville, Alabama

Wednesday, Sept. 25

@ The Westin Huntsville, 6800 Governors West, NW



Birmingham, Alabama

Thursday, Sept. 26
@ Birmingham Marriott,
3590 Grandview Parkway

Johnson City

(student reception only)
Tuesday, Oct. 1
@ Carnegie Hotel,
1216 W. State of Franklin Road

Knoxville

Wednesday, Oct. 2
@ The Foundry,
747 World's Fair Park Drive

Williamson County

Tuesday, Oct. 8
@ Franklin Marriott Cool Springs,
700 Cool Springs Blvd.

Clarksville

Thursday, Oct. 10
@ TownePlace Suites,
120 Fair Brook Place

Bowling Green, Kentucky

(student reception only)
Tuesday, Oct. 15
@ Holiday Inn University Plaza,
1021 Wilkinson Trace

Louisville, Kentucky

Wednesday, Oct. 16
@ Louisville Marriott East,
1903 Embassy Square Blvd.

Nashville

Tuesday, Oct. 22
@ Millennium Maxwell House, 2025
Rosa L. Parks Blvd.

Chattanooga

Tuesday, Oct. 29
@ Chattanooga Convention Center,
1 Carter Plaza

Atlanta, Georgia



Wednesday, Oct. 30
@ Hyatt Regency Atlanta Perimeter at
Villa Christina, 4000 Summit Blvd.

Memphis

Wednesday, Nov. 6
@ Esplanade Memphis,
901 Cordova Station Ave.

Jackson

Thursday, Nov. 7
@ Jackson Country Club,
31 Jackson Country
Club Lane



Our True Blue Tour
will return to 14 cities in
four states this fall.

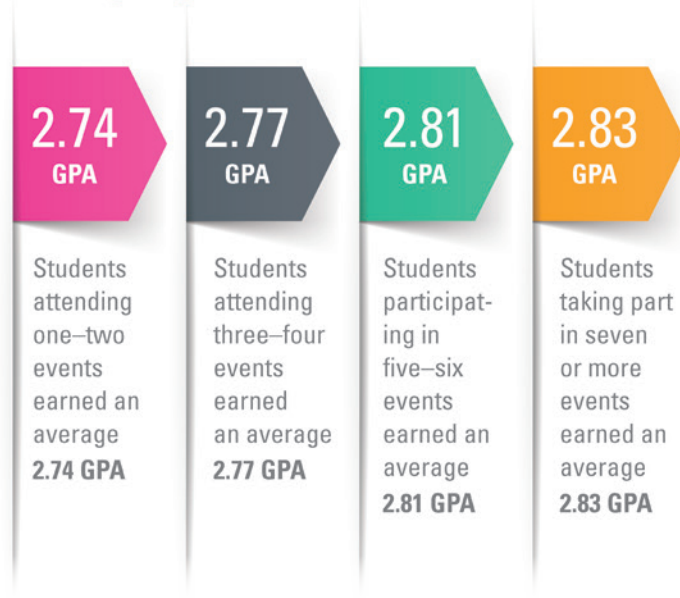


*Jordan Claybrooks (l) and
Jumescia Andrews go
through their
CUSTOMS
package.*

Higher GPAs for Connection Point Attendees

During 2018–19, over 80% of first-semester freshmen participated in at least one Connection Point activity. Participation in this program is also positively linked with academic performance; MTSU students not attending any events earned a significantly lower grade point average than active Connection Point participants.

The highest GPAs correlated with those students attending the greatest number of events.



▶ Saturday's Convocation will be immediately followed by my **President's Picnic and Athletics Fan Day** in Floyd Stadium. Westover will sign copies of her book, student-athletes will be on hand for autographs, and food and game-day activities will be available for all. Please join us for this True Blue tradition.

▶ **Shut Up and Dance**, in collaboration with the College of Media and Entertainment, will be the Connection Point highlight at 2:30 p.m. Sunday, Aug. 25 in Tucker Theatre. An interactive and exciting show featuring some of Nashville's finest musicians and hit-makers, *Shut Up and Dance* offers an opportunity to learn about our most fundamental freedoms through the inspiration, activism, and censorship that lie in the untold stories of some of America's favorite and most famous songs.

▶ **Family Weekend** is scheduled for Sept. 13–14, with MTSU hosting Power 5 school Duke University at 6 p.m. Saturday, Sept. 14, for our annual Black Out football game. The annual Freshman Walk will take place at halftime.

▶ You can learn more about the Connection Point program and events at mtsu.edu/connection. **MTSU**



The President's Picnic and Fan Day will follow Convocation on Aug. 24.

LEADERSHIP AT MTSU

Governor appoints MTSU alumnus Boyd, reappoints Baker, Wright to University Board of Trustees; Martin, Eisenberg join Board

Tennessee Gov. Bill Lee recently appointed MTSU alumnus **Tom Boyd** of Lebanon to a six-year term on the University's Board of Trustees.

Boyd, an investment adviser representative with Decker Wealth Management in Nashville, will replace Andy Adams, who decided to not seek a second term on the 10-member board.



Tom Boyd

With more than four decades of experience in financial management and banking, Boyd previously served as a senior vice president at Bank of America where he handled areas ranging

from treasury management to commercial banking to loan administration.

Boyd graduated from MTSU in 1973 with a Bachelor of Science degree and went on to earn his Master of Business Administration degree from the University of Tennessee. He served with the Tennessee Army National Guard from 1970 to 1976.

Boyd has maintained strong ties with MTSU, serving on numerous boards and committees that include the MTSU Foundation Board, Jennings A. Jones College of Business Professional Advisory Board and the Blue Raider Athletic Association.

Other recent additions to the board include:



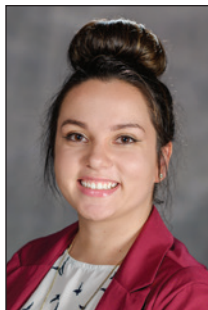
Mary B. Martin

Mary B. Martin, faculty trustee, is a professor of Mathematics in the College of Basic and Applied Sciences. Martin earned her Bachelor of Science at MTSU; she received her master's and Ph.D. degrees from the University of North Carolina. Martin has served several terms on

the MTSU Faculty Senate, as well as having served as both the secretary/treasurer and the

Faculty Senate president. Martin has been teaching mathematics for 20 years at MTSU.

Samantha Eisenberg, student trustee, graduated from MTSU in May, 2019, with a B.S. in Psychology. She is currently pursuing a master's in Clinical Psychology, specializing in neuropsychology. She is currently a graduate assistant in the Psychology Department and serves as vice president of the Collegiate Neuroscience Society as well as treasurer of the American Democracy Project.



Samantha Eisenberg

Eisenberg formerly served as a senator, and as attorney general for the MTSU Student Government Association.



J.B. Baker

The governor also reappointed business owners **J.B. Baker** and **Pam Wright**, who will also serve six-year terms.

I'm proud that an alumnus with Boyd's extensive background in business and community service will be joining our great board. I look forward to his contributions in shaping the direction of our institution and deeply appreciate the ongoing commitments of Wright, Baker, and other trustees in volunteering their time and talents. And, of course, we are grateful for Adams' invaluable contributions

in establishing our new governing body and his continued loyalty and support of his alma mater. [MTSU](#)



Pam Wright

Board of Trustees

Mr. J.B. Baker
Owner and CEO,
Sprint Logistics

Mr. Tom Boyd
Past Senior
Vice President,
Bank of America

Mr. Pete DeLay
Executive, Forterra
Building Products

Mr. Darrell Freeman Sr.
Vice Chair
Founder, Zycron Inc.

Mr. Joey A. Jacobs
Past Chair and CEO,
Acadia Healthcare

Ms. Christine Karbowski
Executive Vice President,
Chief Administrative
Officer, and Chief
Risk Officer,
Bridgestone Americas

Mr. Stephen B. Smith
Chair
Chair, Haury and
Smith Contractors

Ms. Pamela J. Wright
Founder, Wright Travel

Dr. Mary Martin
Faculty Trustee
Professor,
Mathematical Sciences

Ms. Samantha Eisenberg
Student Representative

MTSU continues to be an exciting place to work and study, in large part because so many renovations and new buildings are underway, taking shape, or opening for use. Facility planning at MTSU is always done with an emphasis on students and with modern training techniques and methodologies top of mind.

Here is a brief update on recent and current projects.

College of Behavioral and Health Sciences (CBHS) Academic Building

- Steel structural system completed
- Exterior framing finished at north elevation
- South stair installed and north stair in progress
- Roughing in mechanical, electrical, and plumbing systems
- Estimated completion by Fall 2020
- New center for CBHS and consolidating functional areas for the Criminal Justice Administration, Psychology, and Social Work departments
- Providing critically needed classrooms, offices, and lab spaces
- \$39.6 million total project cost
- 91,000 square feet
- Building site located north of the Student Union across MTSU Boulevard

Middle Tennessee Boulevard Project

- Construction completed and final paving and striping finished
- Widened 0.8-mile section of Middle Tennessee Boulevard between East Main and Greenland to a divided four-lane street
- Added landscaped median with dedicated turn lanes
- Improved pedestrian walks and crossings
- Dedicated bike lanes
- Lighting improved
- New underground utilities
- Monument entry walls to MTSU campus
- New drop-off at Murphy Center



The new CBHS Building is on its way to opening by Fall 2020.



School of Concrete and Construction Management Building

- Designer selection underway
- Abernathy and Ezell Halls to be demolished for the building site
- Expansion to the Satellite Chiller Plant part of the project
- Includes flexible instructional spaces and discipline-specific labs
- Incorporating exposed structural and other building systems to be used as a teaching tool for students and visitors
- An open-air courtyard area anticipated to act as an extension of the teaching space
- \$40.1 million total project cost
- Estimated completion in late 2021
- 54,000 square feet

Parking Services Facility

- Design phase completed
- Construction starting in Fall 2019 and finishing in Winter 2020
- Located on City View Drive
- New home for Parking Services, including parking permits, bus maintenance, and personnel offices
- 13,000-square-foot building area

Capital Maintenance Projects

- \$4.73 million funded for projects in 2019–20 fiscal year
- Multiple-building roof replacement project
- Renovations to KOM mechanical / HVAC systems
- Improvements to campus stormwater drainage systems
- Renovations to Stark Agriculture Building and Police Station to include HVAC and sprinkler system work
- Boiler replacement at Miller Education Center [MTSU](#)

DELEGATION FROM CHINA

First lady Elizabeth McPhee and I hosted a delegation of about 40 **visiting Chinese middle school students** from Hangzhou Normal University's Dongcheng Education Group last month.

The visit is the eighth cultural exchange in a series of reciprocal visits between our institutions. It was the fourth time MTSU has hosted the Dongcheng delegation, who also visited before in 2013, 2015, and 2017. Students, parents, and teachers from Rutherford-area schools were hosted by Dongcheng in China in 2012, 2014, 2016, and 2018. Dongcheng is an affiliate of Hangzhou Normal University, MTSU's partner in the creation and

operation of the Confucius Institute on our campus. Dongcheng oversees a network of magnet-style schools in Hangzhou, China.

During the trip, the first lady, assisted by local teachers and parents who have traveled with MTSU to China on previous exchanges, conducted joint classes for Chinese and American students at Mitchell-Neilson and Overall Creek elementary schools in Murfreesboro and hosted a workshop for Chinese teachers.

The delegation also **toured facilities on the MTSU campus** and saw cultural sites, including the new Tennessee State Museum in Nashville and the Tennessee Aquarium in Chattanooga.

One highlight of the trip was an all-American picnic that we hosted at our home. We were aided by MTSU cheerleaders and soccer team members, cheerleaders from Rutherford County's Blackman High School and Central Magnet School, and members of Scouts BSA and the Girl Scouts of the USA. The Chinese guests were treated to games of soccer, corn hole, volleyball, and airplane toss, along with face-painting and other activities—including a watermelon-eating competition.

It's wonderful to see youth from our two countries here together, smiling, having fun and playing games. Events like this help **make our world smaller and our hearts bigger.** [MTSU](https://www.mtsu.edu)



First lady Elizabeth McPhee and I hosted an all-American picnic for the Chinese delegation at our home on campus.



ACADEMICS

Whether it's one-of-a-kind, hands-on learning in real-life situations outside the classroom, incredible research pairings with a professor that are usually only available to grad students at other universities, or building an ePortfolio documenting and reflecting on academic and co-curricular connections and involvement as they prepare to enter the workforce, MTSU offers our students limitless opportunities not just to attend college but to engage their minds and spirits in an immersive experience.

Each college and academic unit on campus is producing such incredible successes that I could not possibly recount them all here in this newsletter. As such I have selected just a few examples of academic achievement to highlight for you in this fall newsletter.



BEHAVIORAL AND HEALTH SCIENCES

MTSU is poised to become one of the premier institutions for furnishing personnel to a burgeoning industry that is critical to the mid-state economy and in need of skilled professionals. The University has developed a new Tourism and Hospitality Management degree starting this fall, following an announcement in March at Omni Hotel Nashville, one of our corporate partners. Housed in the Department of Health and Human Performance, it is the only such degree program in middle Tennessee. The multitrillion-dollar industry supports one in 10 jobs worldwide and is growing by about 5% each year to a projection of 413 million jobs by 2028. Students can choose one or all of three emphasis areas: travel and tourism management, hospitality and hotel management, and event planning.



Earlier this year, MTSU was ranked among college and universities across the country with one of the best Criminal Justice undergraduate programs, according to **TheBestSchools.org**. MTSU, rated No. 37 nationally, is one of only two Tennessee universities on the list, along with Bryan College (No. 40) in Dayton. The website reviewed all accredited online Criminal Justice bachelor's degree programs in the U.S. to select the Top 50, based on curriculum quality, faculty excellence, rankings, awards, and each school's reputation for providing quality online degrees. Ranking evaluators noted that MTSU "maintains an extensive internship program for criminal justice students who receive on-the-job training in different criminal justice sectors, including at probation and parole offices, juvenile and drug courts, and various state and federal agencies."

ACADEMICS continued on page 14 ►



Ed Opron, Omni Hotels Nashville general manager, speaks at the announcement of MTSU's new Tourism and Hospitality Management degree.



Embassy Suites Murfreesboro worker Will Mitchell (r) is a student at MTSU, where a Tourism and Hospitality Management degree is launching this fall.

JONES COLLEGE OF BUSINESS



A new program within MTSU's Department of Marketing is filling an increasing need for sales professionals in the mid-state economy with the support of partnerships and a team of industry advisors. Launched last fall, the new Professional Selling concentration in Marketing was made



**JCOB Dean
David Urban**

possible through a \$100,000 donation from Nashville-based Insurance Group of America that will fund the IGA Office of Professional Sales with \$20,000 annually for the next five years. The mission of the new office is to increase student outreach and internship opportunities and attract top scholars to the program.

Efforts to boost graduate enrollment in the Jennings A. Jones College of Business yielded these increases in the past year:

- ▶ Flex M.B.A., 11%
- ▶ M.S. in Management, 31%
- ▶ M.S. in Finance, 13%
- ▶ M.A./Ph.D. in Economics, 4%

Jones College national rankings last year feature the No. 34 Online



Founder-owner Jamie Noe's company IGA donated \$100,000 to fund the IGA Office of Professional Sales.

Master's in Finance program (directed by Frank Michello) and the No. 45 Best Value Accounting program. Other recent rankings include: No. 39 Master's in Accounting program, 2017; No. 21 Master of Management program, 2017; No. 17 Best Universities for Aspiring Entrepreneurs, 2016; and No. 39 Best for Vets business school, 2016 (No. 63, 2014).



The Finance master's, with Frank Michello (r) as director, is ranked 34th nationally among online programs.

BASIC AND APPLIED SCIENCES



During MTSU's spring break, Biology students in Ashley Morris' Biome Analysis class spent four days in Great Smoky Mountains National Park outdoor and indoor "laboratories" taking a course she titled "Ecology and Management of the Great Smoky Mountains National Park" and that park promoters dubbed "SmokyMtnU." Students



Infiniti Bristol (r) observes supervisory fisheries biologist Caleb Abramson during an MTSU class trip to the Great Smoky Mountains National Park.

observed wildlife management and special efforts related to fish and elk. The 4-hour pilot course concluded later with a five-day hiking, backpacking, and primitive camping experience during finals week.

Tennessee Gov. Bill Lee visited campus in March to underscore several of MTSU's ready-to-



Gov. Bill Lee spoke at an MTSU event recognizing Siemens' significant gift of computer-aided design software to the Mechatronics Engineering program.

work degree programs that have been tailored to fit the needs of the state's workforce. Students in one of those programs, Mechatronics Engineering, are getting state-of-the-art training through an in-kind grant from Siemens Digital Industries Software, one of our corporate partners with MTSU's College of Basic and Applied Sciences.

The software gives students access to the same technology that companies around the world depend on every day to develop innovative products in a wide variety of industries. Lee stated that MTSU continues to offer high-quality education and prepare students for the jobs of tomorrow and that the partnership with Siemens is a key part of pairing industry needs with education opportunity.

LIBERAL ARTS



MTSU'S Board of Trustees this summer approved a new Bachelor of Science in Public Writing and Rhetoric, a four-year interdisciplinary program housed in the College of Liberal Arts. The degree will be the first of its kind in the region.

The higher-ed insights firm, College Factual, ranked MTSU's liberal arts offerings among the top 50 universities in meeting the academic needs of student veterans. The website rated MTSU No. 41 among Best Liberal Arts General Studies Programs for Veterans, out of 355 colleges and universities reviewed for veteran friendliness. This puts MTSU in the top 15% of all schools in the nation when it comes to offering a quality education to veterans studying liberal arts, the website stated, noting that the University improved its ranking position 13 slots over the previous



CLA

College of Liberal Arts
EXPLORE/ENGAGE/ENRICH/EARN

year. Meanwhile, MTSU's Liberal Arts program is ranked No. 1 out of the eight colleges and universities in Tennessee reviewed by College Factual for veteran friendliness, moving up from the previous year's No. 2 ranking.

The 12th Tennessee Area Japanese Speech Contest was hosted at MTSU



Priya Ananth



Fusae Ekida



Sekou Franklin

on April 6. Several sponsors such as Nissan North America, Mitsui & Co., and Japan Airlines sponsored this event. The contest was also supported by the Consulate-General of Japan in Nashville and the Tennessee Language Center. There were 35 participants from seven universities from Tennessee and Kentucky. Faculty members Priya Ananth (associate professor and

coordinator of MTSU's Japanese program), Fusae Ekida (assistant professor), Chiaki Shima (instructor), and Ryoko Poarch (lecturer) worked hard with helping five MTSU students prepare their speeches, as well as with the organization of the event. Ten student volunteers from our Japanese program did a fantastic job of making this regional event a grand success.

Sekou Franklin, an associate professor at MTSU, was elected president of the National Conference of Black Political Scientists, an organization now celebrating its 50th year.

ACADEMICS continued on page 16 ➤



U.S. Sen. Marsha Blackburn recently toured the Charlie and Hazel Daniels Veterans and Military Family Center at MTSU. Our liberal arts program is rated No. 41 nationally for veterans.

I AM *true* **BLUE**™

UNIVERSITY COLLEGE



The Training and Development concentration in the Master of Professional Studies online program has received top rankings for quality and affordability.

OnlineMasters.com named MTSU's program among its list of Best Online Master's in Training and Development Programs for 2019. The research identified the top programs in the nation based on curriculum quality, program flexibility, affordability, and graduate outcomes. Grad School Hub also identified the same program No. 2 nationally among the most affordable online master's programs in training and development.



A grant will help University Studies focus on improving outcomes in general education mathematics for underrepresented minorities.

The Tennessee Board of Regents awarded faculty in the University Studies Department a grant to develop strategies to enhance the success rates of underrepresented minority student populations in general education mathematics courses. Given national research data, Tennessee state data, and MTSU data, faculty noted that African American male success rates were significantly lower than other student populations in these courses. Improving outcomes for African American males will be a major focus for this grant.

HONORS COLLEGE



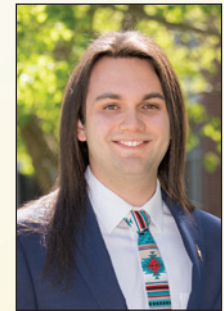
Three Honors students received MTSU's top campus awards this spring. Myranda Uselton (President's Award), Robert Owen (Provost's Award), and Gareth Laffely (Community Service Award) share a passion for academic excellence, which when paired with service is a winning combination that contributed to their selection. Laffely additionally was one of five students statewide to receive a Harold Love Outstanding Community Service Award from the Tennessee Higher Education Commission.



Myranda Uselton



Robert Owen



Gareth Laffely

Laura Clippard, an Honors College advisor, received an IEA Fulbright for an educational trip abroad in June. While in Japan, Clippard visited a wide range of educational institutions and universities and discussed women's issues in the United States and Japan with the 10 women in her Fulbright group. They also met a group of visionary women who have made international impacts, including Hiroshima Jogakuin University's current president, Akiko Minato, who is 87 years old. Minato shared her extraordinary journey, including her experience meeting Martin Luther King Jr. She also revealed that her journey started when she received a Fulbright in the 1950s to visit America.



Laura Clippard

JAMES E. WALKER LIBRARY



The major project going on in Library Technology is the development of spatial computing applications. Using the Magic Leap augmented reality headsets recently purchased for Walker Library's Makerspace, Physics major Isaac Shirk and Chemistry student Myranda Uselton are developing classroom teaching software for Chemistry, Physics, and Astronomy laboratory classes. We hope to begin testing this software in classes in the fall, and we are happy to have such excellent students working on this project. Shirk won this year's MTSU Modern Physics Excellence Award, and Uselton earned this year's MTSU President's Award.

The Makerspace hosted the "I am a Man VR" exhibit for Black History Month. Using an Oculus Rift VR headset, the experience used actual audio and pictures from the 1968 Memphis sanitation workers' strike to immerse the user in the events leading to the assassination of the Rev. Martin Luther King Jr.

Student Life at MTSU



MEDIA AND ENTERTAINMENT



Upwards of a thousand people attended WMOT Roots Radio's inaugural 895 Fest May 31–June 1 at Hop Springs Beer Park in Murfreesboro. The festival featured headliner Rodney Crowell along with Americana acts like Delbert McClinton, The War and Treaty, Leroy Parnell, Mike Farris, and more. WMOT (89.5-FM), a charter National Public Radio station housed at MTSU, also celebrated its 50th anniversary on April 9, featuring a three-hour live broadcast enjoyed by a host of supporters inside the on-campus Cyber Café.

In April, Media Arts students went behind-the-scenes at the Academy

of Country Music Awards (ACM) rehearsals in Las Vegas. This is the second year in a row that alumnus Pete Fisher, former CEO of the ACMs, and the show's director, Glenn Weiss, used the awards show as a learning lab for our students. Seven MTSU alumni were among this year's CMA nominees, and LANCO (of which three of the five band members are MTSU alumni) took home 2019's Group of the Year award.

The School of Journalism and Strategic Media created a new Sports Media concentration and minor that were approved by the University Curriculum Committee this spring. The Sports Media concentration helps prepare students to pursue careers in sports information;

sports promotion, publicity, and social media; and sports journalism. The Sports Media curriculum will be offered starting this fall.

ACADEMICS continued on page 18 ►



At WMOT Roots Radio's inaugural 895 Fest



Steve Poltz performs at WMOT's Roots Radio inaugural 895 Fest at Hop Springs.



Recognizing MTSU alumni Chandler Baldwin (l), Jared Hampton, and Eric Steedly (r) for LANCO's CMA Award

COLLEGE OF EDUCATION



MTSU's Center for Counseling and Psychological Services



The Womack Department of Educational Leadership observed the Professional Counseling program's 50th anniversary with a June 15 reception at Miller Education Center. Some students in the program prepare themselves to work as professional school counselors at the elementary, middle, and secondary school levels. Other students who pursue the clinical mental health counseling degree track become educationally prepared for licensure as professional counselors with mental health service provider designations. The Center for Counseling and Psychological Services, now located inside the Miller building on Bell Street, was established in 2005, enabling graduate students to offer direct counseling services to children and adolescents under faculty supervision as part of the students' practicums. Virginia Dansby, a former high school teacher and counselor who has been vital in the counseling growth's program over the years, was honored for her work as she embarked on her retirement. Sarah Brant-Rajahn, a board-certified counselor with more than 10 years of experience, assumed Dansby's position beginning this month. The program also will transition from a 49-hour program to a 61-hour program, resulting in a shift from a master's degree to the specialist's degree in education (Ed.S.).

OTHER NEWS



Our trustees approved a slight increase in tuition and fees this fall. Undergraduate tuition and mandatory fees will rise 2.37%, still below the 2.5% cap set by THEC. For a student taking 15 hours, combined tuition for the Fall 2019 and Spring 2020 semesters will go from \$9,206 to \$9,424. MTSU still has the lowest undergraduate tuition of the state's three largest universities, behind the rates at the University of Tennessee in Knoxville and the University of Memphis.

MTSU Associate Provost Faye Johnson retired on June 30, and long-time History professor Mary Hoffschwelle was named her replacement. Ken Paulson has moved from dean of the College of Media and Entertainment to become director of



Ken Paulson

MTSU's new Free Speech Center and will remain a faculty member. Zeny Panol, the college's associate dean, is filling in as interim dean. Bonnie Allen retired as dean of Walker Library, and Jason Martin, the library's associate dean, is serving as interim dean. Guanping Zheng is interim vice provost for international affairs after David Schmidt left MTSU in June to become president of the American University in Dubai.



Mary Hoffschwelle

A late-afternoon thunderstorm didn't dampen the spirits or enthusiasm for those attending the second MTSU Veteran Impact Celebration at The Grove at Williamson Place June 27. Dodging the downpour, veterans appeared along with local business owners, musicians, MTSU staff and administrators, and even three local mayors. The event raised more than \$150,000 for the Charlie and Hazel Daniels Veterans and Military Family Center at MTSU. The celebration featured Daniels, a Country Music Hall of Fame member, and retired Lt. Gen. Keith M. Huber, MTSU's senior advisor for veterans and leadership initiatives. Daniels' foundation, The Journey Home Project, contributed \$100,000 for the second consecutive year to our veterans' center, among the largest such centers in the nation. Key sponsors included Censis Technologies Inc. and Dollar General, among others. [MTSU](#)



Charlie Daniels performed at the second Veteran Impact Celebration, where The Journey Home organization he co-founded donated another \$100,000 to MTSU's Daniels Center.

TECHNOLOGY

Several important IT projects taking shape highlight our collective focus on student success.

- ▶ **Banner 9:** The latest version of Banner (Banner 9) is now available to the general campus. Referred to as Banner Admin Pages, Banner 9 uses newer technology that negates the need for Oracle Forms and Java. It also ends browser dependency on Internet Explorer and is designed to work with other browsers such as Chrome, Firefox, Safari, and MS Edge. Moving PipelineMT's Banner components to version 9 is Phase 2 of this project and is currently underway with a targeted date of a late 2020 rollout.
- ▶ **Antivirus:** The Information Technology Division (ITD) also deployed a next-generation antivirus system to over 7,000 endpoints, including client devices and servers. This new security software introduces machine learning to protect against advanced malware such as ransomware. This means our systems feature additional safeguards that defend against new and previously unknown malicious threats.
- ▶ **Digital Asset Management:** MTSU has a wealth of digital assets from photos to videos, recordings, etc. Many of these valuable materials across numerous campus units are not stored securely or backed up properly. And finding the asset that you need is very challenging. To help alleviate this problem, a new project is underway to research and implement a digital asset management software system. ITD is currently leading a team of representatives from various MTSU divisions to identify and prioritize the needs for such a system, with procurement and implementation to follow.
- ▶ **ERP Review:** Our Banner contract will end in approximately three years, and we need to investigate the most appropriate future direction for MTSU. Options include renewing Banner, either with TBR or independently, or pursuing alternative enterprise resource planning (ERP) systems. To do our due diligence for this investigation, ITD is contracting with Strata Information Group to perform a review of our ERP business processes. Strata consultants will be onsite for a weeklong engagement in both September and October to meet with IT and functional staff who support our current Banner business operations. If an alternative ERP system is pursued, a bidding proposal will need to be written and evaluated, thus the need to start now.
- ▶ **Instructional Spaces:** Over the summer, 350 classroom and lab computers were replaced along with 11 classrooms that received upgraded audio-visual equipment. Additionally, 800 classroom and computer lab machines were upgraded to Windows 10. Equipment in the Lucinda T. Lea Learning, Teaching, and Innovative Technologies Center, which

is a development and training area for faculty, was upgraded to the latest technology being used in classrooms across campus.

- ▶ **Strategic Leadership Platform:** Academic Performance Solutions (APS) is a decision-support tool designed to provide college and departmental leadership with important information relevant to their respective academic units. This will be a very useful and versatile platform designed to inform strategic leadership, decision-making, resource allocation, and all of the other great work taking place in our academic programs and in the Office of the Provost. Many campus leaders got a very preliminary look at this Academic Affairs technology in April, and our full platform launch is currently scheduled this fall. For more information, contact Brian Hinote in the Office of Student Success at brian.hinote@mtsu.edu or Becky Cole in the Office of the Provost at Becky.Cole@mtsu.edu.
- ▶ **LT&ITC Naming Dedication:** MTSU recently dedicated the [Lucinda Taylor Lea Learning, Teaching, and Innovative Technologies Center](#), known on campus as the LT&ITC, in honor of the person whose vision brought the instructional support resource to fruition 15 years ago. Lea, now retired as MTSU vice president emeritus, was honored at a special ceremony June 17 at the center on the third floor of Walker Library. Lea served the University from 1973 to 2010 as the first director of the center before eventually becoming MTSU's first vice president of information technology and chief information officer. [MTSU](#)



Dedication of the Lucinda Lea Learning, Teaching, and Innovative Technologies Center in honor of the ITD vice president emeritus.

OFFICE OF RESEARCH AND SPONSORED PROGRAMS AND COLLEGE OF GRADUATE STUDIES

As a publicly-supported institution of higher learning, we take our role to serve the state of Tennessee very seriously, which includes educating undergraduate and graduate students to enter the workforce well educated and skilled.

This role also involves conducting research and creative activities that produce knowledge, information, data, technologies, know-how, and other outcomes that are disseminated from MTSU to the whole state to help improve the economy, services, and quality of life for all Tennesseans.

During the 2018–19 fiscal year, 47 principal investigators and project directors from 23 academic departments and nine centers or institutes (representing all six academic colleges) **received 73 new grants and contracts with a total value of \$10,348,371**. During the same period, 89 faculty and administrators representing 30 departments and 13 centers and institutes submitted 150 proposals requesting a total of \$28,588,204 from external sponsors.

MTSU managed 195 active awards during 2018–19, with a **lifetime portfolio value of \$44,760,871**. Six federal agencies provided 60% of that funding:

- ▶ U.S. Department of Agriculture, \$3,319,946
- ▶ U.S. Department of Education, \$8,053,677
- ▶ U.S. Department of the Interior, \$2,621,262
- ▶ National Institutes of Health, \$2,620,824
- ▶ National Science Foundation, \$8,078,550
- ▶ Small Business Administration, \$2,232,876

The Faculty Research and Creative Activity Committee awarded our full allocation of \$169,431 to 11 faculty this past year. The committee received applications from 26 faculty, representing 20 academic departments across five colleges.

The Undergraduate Research and Creative Activity Committee handed out our full allocation of \$135,500 to 81 individual student researchers and four undergraduate summer research teams this year. The committee received 162 applications representing 27 academic departments across six colleges.



Cynthia Chafin

As just one example of relevant MTSU research output, MTSU's Center for Health and Human Services, led by associate director Cynthia Chafin, formed a research partnership with the Sleep Centers of Middle Tennessee, owned by physicians William Noah and Timothy Hoelscher, called the Sleep Research Consortium (SRC). The consortium aims to increase public awareness of how important sleep is to human existence, health, and well-being. The SRC already has completed a one-year study investigating the role of

sleep in obesity in fourth-grade children across four rural Tennessee counties and is collecting data to complete a 10-year study on the progression of obstructive sleep apnea in college football players.

Next, increasing graduate student enrollment helps strengthen MTSU's position as a publicly funded research university; enhances MTSU's reputation as a research institution from both faculty and students' points of view; meets market need for a more educated workforce in Tennessee, within the region, and across the nation; and increases revenue from both tuition and fees and the state funding formula.

The College of Graduate Studies (CGS) awarded more than **\$3 million in graduate teaching assistantship stipends** this past year to 382 graduate students. This \$3 million does not include the tuition reimbursement that comes with the positions.

The CGS also hosted TRIO undergraduate students from Arkansas State University and Eastern Kentucky University in April. TRIO consists of federal outreach and student programs designed to identify and provide services for low-income, first-generation college students. The College of Graduate Studies created opportunities for TRIO students to meet with faculty from the students' intended fields of graduate study and to communicate with CGS staff about graduate admissions and funding. [MTSU](#)



Sleep Centers of Middle Tennessee, co-owned by Dr. William Noah (l) who is shown here with Computational Science doctoral candidate Gabriel Toban, entered a research partnership with MTSU's Center for Health and Human Services.

INTERNATIONAL RELATIONS

MTSU has strengthened our international initiatives both on campus and around the world. Those efforts boost student success through creating opportunities for travel, exposure to culture, and research opportunities.

Here are some of the highlights in our international activities:

- ▶ The first cohort students from the **collaborative program with Guangxi University** successfully completed their program at MTSU. Among the 40 students who enrolled in the program in 2017, 29 of them received their master's degrees in Finance, Business Management, and Actuarial Science. The students' GPAs at MTSU range from 3.46 to 3.82.
- ▶ Ten students from **Guangxi University of Technology** spent two weeks at MTSU learning about American education and culture and studying topics in their computer science major. Two groups of 70 middle school children from Hangzhou Dongcheng Education Group in China also took part in an educational exchange activities and an immersive language and culture program at MTSU.
- ▶ We had another successful year for MTSU students studying abroad. A total of 333 students participated in a wide range of **study-abroad programs in 37 countries**. The 27 MTSU Signature Programs highlight the dedication of our faculty in curriculum internationalization.
- ▶ For the third year in a row, Animation students participated in the Wonderful World International Student Media Art Exhibition in China and Malaysia. The event is a chance for students to creative live-action and animated short films to help raise awareness about global issues, from autism to the environment, and to facilitate cooperation and exchange between universities on an international scale. This year's theme was "Human and Animals." MTSU's team of 13 students created an animated short film, entitled *First Leg of the Journey*, about a teenage girl who creates prosthetic limbs for her dog Charles after he loses his leg in a car accident. The film was **runner-up for Best Animated Short** out of 28 universities and 13 participating countries, including the U.S., China, Germany, France, United Kingdom, Malaysia, Greece, and Tanzania. Provost Mark Byrnes gave remarks at the closing ceremony.
- ▶ Additionally, the **global demand for professional pilots** helped propel a partnership approved this summer between MTSU and Moi University of Kenya. Isaac Kosgey, Moi's chief executive officer, signed a five-year

pact with me that will allow our respective aerospace faculty to collaborate on teaching and research and have student exchanges. Moi University in Eldoret, near Kenya's capital of Nairobi, boasts an enrollment of about 52,000 students. Like MTSU, many of its signature programs are geared to produce ready-to-work graduates in response to industry needs. Moi's aerospace school was established in 2009 and features departments of flying studies, aviation management, flight training, and aviation electronics. It has about 210 students enrolled and three training aircraft. In contrast, MTSU's Aerospace Department was established in 1943 and features concentrations in Aviation Management, Aerospace Technology, Flight Dispatch, Maintenance Management, Professional Pilot, and Unmanned Aircraft Systems Operations. We have about 700 Aerospace students enrolled and will fly about 30 training aircraft by the fall. The partnership will help supply the growing demand for professional pilots globally. Delta Air Lines, for example, projects it will lose 8,000 of its current pilots over the next 10 years. Meanwhile, trends suggest that air passenger numbers could double to 8.2 billion by 2037. This global surge in aviation is creating an insatiable, worldwide demand for pilots. And that frenzy is threatening the ability of flight schools, including at MTSU and at Moi University, to train new ones. MTSU already has strong ties of a different sort to Kenya, which has been a frequent recruiting stop of MTSU's track and field and cross country teams. More than 50 Kenyans have run for Coach Dean Hayes over the last four decades. [MTSU](#)



MTSU has signed a five-year pact with Moi University of Kenya for aerospace teaching and faculty collaboration as well as student exchange programs.

CAMPUS SAFETY AND SECURITY

As the University continues to seek ways to make our campus more secure, we're making strong progress thanks in part to efforts by our Information Technology Division and University Police.

We currently have **more than 850 security cameras** across the campus, including recent installations inside Walker Library, and expect to install another 20 cameras before the end of the calendar year. These cameras serve as a deterrent to criminal activity and also assist our officers in investigating incidents that may occur.



Additionally, we will be installing a new emergency phone serving the area southeast of the Cope Administration Building. And infrastructure is being completed for the installation of an additional 20 security cameras and **three emergency phones around our campus**.

Meanwhile, University Police is **implementing a canine program** in which a narcotics detection dog is being purchased and trained for this fall semester. Our police

department also recently hired four additional officers with three more coming on board in September.

Finally, University Police completed a noteworthy achievement earlier this year, **earning accreditation** from the Commission on Accreditation for Law Enforcement Agencies in May. This accreditation helps University Police continue to sustain and implement best-practices guidelines for utilizing resources for effective and efficient police operations. [MTSU](#)



FOOD SERVICE

The University has signed a **new contract with Aramark** that began on July 1 for the company to continue as its food service contractor.

The agreement is an exclusive contract for campus food service where the food cost exceeds \$500.

Departments will be allowed to use Aramark or any other food service provider if the total food cost for the event is less than \$500.

There are new **campus restaurants opening** this fall, plus a new policy on allowing departments to order outside food in some instances. (We are in the process at press time of revising the Food and Beverage policy.)



The new Farmers Market dining hall will feature locally sourced products, including some from School of Agriculture units.

As a part of the newly negotiated food service contract, the former JUB Raider Zone residential dining venue is being renovated. The former serving area is being converted to a retail dining space, the **Raider Zone Grill**, and a grab-and-go market. The upgrade will offer fresh, made-to-order food featuring an action cooking station and will provide a late-night food option for the west side of campus.



The Happy Tomato/Totally Baked Potato Bar venue in the MTSU Student Union is being renovated to accommodate a new concept, **Bento Sushi**. In addition to sushi, Bento will offer made-to-order Japanese hot food.

The Blue Raider Grill in the MTSU Student Union is being renovated and will become an all-you-care-to-eat residential dining venue called **Farmers Market**. The menu will feature creative and deliciously fresh dining options with a majority of the menu from locally sourced products, including the MTSU Creamery, that focus on farm-to-fork initiatives. [MTSU](#)

DEVELOPMENT

Private support continues to provide valuable resources for our campus, and donor support for the current fiscal year is approaching record levels.

- ▶ Our Concrete and Construction Management Program has received \$5.2 million in commitments for our new Concrete and Construction Management Building, which is funded as part of the 2019–20 state budget.
- ▶ The University secured \$2.2 million in new geo-mapping technologies and software for our Geosciences Department.
- ▶ The annual True Blue Give campaign exceeded response rate and participation benchmarks, raising over \$400,000.
- ▶ MTSU maintained our portfolio of corporate partners/prospects at more than 70 and established new relationships with several new companies, including Amazon and Alliance Bernstein.
- ▶ The annual Alumni Spring Showcase included more than 50 events representing all colleges and athletics.
- ▶ The MTSU Foundation's endowment performance ranks in the top quartile in the National Association of College and University Business Officers annual report.



Country music artist Chris Young, a former MTSU student, joined me in announcing his decision to support a new live performance venue created at MTSU in the former Cyber Café.

- ▶ Last, MTSU recently received a \$50,000 gift from former MTSU student and award-winning country music artist, Chris Young, to create an educational and experiential performance lab in the former Cyber Café. On July 9, MTSU announced the Cyber Café (former Woodmore Dining Hall) is now the Chris Young Café, thanks to Young's donation. The gift provides a permanent fund to support future upgrades to equipment, facilities, and special projects for the space.

In 2018, the College of Media and Entertainment assumed management of the café as an extension of the classroom to provide professional training in all aspects of live performance, including event sound, the fastest-growing portion of audio production. In addition to providing a much-needed advisory role to help students manage performances, scheduling, event logistics, technical support, and promotion, the venue also provides opportunities to work with alumni and professionals in the entertainment industry, enhancing curriculum, internship and job placement, and outreach opportunities for the college.

Drawing from a broad range of talent, the Chris Young Café will be a center of student life in a comfortable, convenient on-campus location, as well as a space that MTSU faculty can coordinate with other campus departments to develop future expansion of programming and technologies. [MTSU](#)

true BLUE GIVE 2019

NEW BLUE ZOO

More than 300 MTSU students filled two sections of Floyd Stadium on August 13 to unfurl a giant new banner for the Blue Zoo, a revived booster group that organizers hope will bring more pep into Blue Raider Athletics starting this fall.

MTSU's now-legendary 2016 March Madness upset win over No. 2 seed Michigan State in the NCAA Tournament helped Kobe Hermann confirm his decision to attend classes on the Murfreesboro campus.

But it was the Blue Zoo, the loud and proud student section he found at Floyd Stadium and Murphy Center his freshman year, that made him a Blue Raider fan.

"The Zoo back then felt like the rowdy soccer sections you would see in games across Europe," he said. "They created a great environment for all."

But with the graduation of its co-founders, Brian Taylor and Aaron Grisham, the Zoo began to lose its mojo. Its once-active Twitter account cooled. The huge banner raised aloft by the Zoo when the Raiders scored vanished. The Zoo was becoming just a memory as its diehard supporters began to leave campus.

Now a senior in the Jones College of Business, Hermann decided to bring his passion for sports and interest in management into play by reviving the Blue Zoo.

A former student government senator, he pulled together a core of student leaders over the summer to revive the Zoo. And thanks to a strategy of targeting incoming freshmen and transfers in its first wave of memberships, the group is poised to become the largest registered student organization on campus.

"The limbo status after the graduation of leadership is what sparked my interest in relaunching," Hermann said. "I knew

Relaunch
puts pep
back into step
of student
section

that registering the Blue Zoo as a student organization would provide it the structure it needs to go from year to year.

"So we wrote a constitution, named an outstanding faculty advisor, sports marketing guru Don Roy, and made an effort to target as much of campus as possible."

Since the relaunch in May, Hermann and his team targeted freshmen at CUSTOMS orientation, registering more than 1,000 from the incoming class. "We plan to make an effort to connect with other student organizations and clubs to involve as many students as we can," he added.

Treasurer Emily Oppmann, a junior and former senator, said that while the Zoo wants to attract all students to games, she believes incoming freshmen are the key to the Blue Zoo's revival.

"If we can engage the class of 2023, encourage them to come to games and keep coming, we will have a solid start to the Blue Zoo," she said. "From there, it will just keep growing."

Vice President Nate Parris, a junior and this year's student Homecoming director, said he hopes the new Zoo will amplify the spirit of the Band of Blue and basketball pep band—and make games more compelling to students.

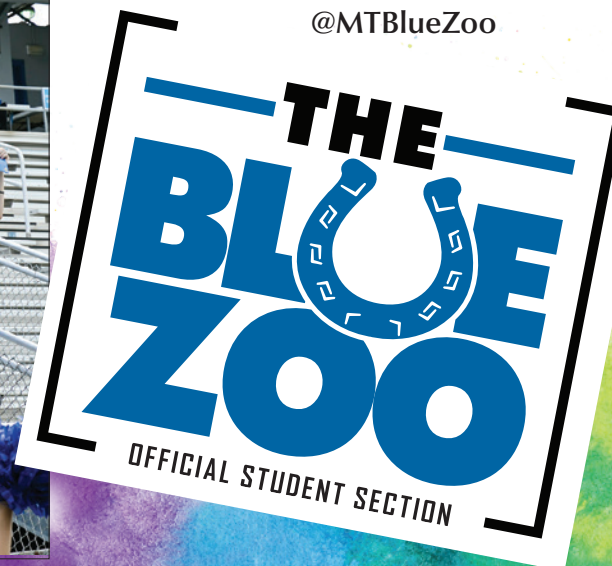
"I hope that we will be able to work together with the Band of Blue to celebrate their talents and hard work and add to the excitement to the student section that they bring," said Parris, who is a former band member.

Senior Micaela Griffin, secretary of Blue Zoo and also a former senator, wants to bring her communications experience as a student in the College of Media and Entertainment to help promote and market the new Zoo.

"Over the next few years, I hope the Blue Zoo grows to become a vibrant student section again that is always there to support our teams," she said. "Helping fill the stands is my way of pitching in." [MTSU](#)



@MTBlueZoo





NEW FAN-FRIENDLY ATTRACTIONS AT FLOYD

MT to debut beer garden at football games this fall

Middle Tennessee is brewing up an exciting new attraction at Floyd Stadium this football season to enhance the fan experience for Blue Raider faithful.

The Blue Raider Beer Garden will debut at field level in the south end zone, in partnership with Hop Springs Beer Park, Steel Barrel Brewery, and the MTSU Fermentation Science program. Entrance to the field level area is free with a ticket to the game but you must be 21 or over.

The garden, which will start serving when stadium gates open, will feature different Steel Barrel craft beers for purchase, as well as grilled food and tables with umbrellas where fans can enjoy the game. There will also be an area for corn hole, giant jenga, and other games for fans to enjoy.

Also, students in MTSU's Fermentation Science program will provide ideas and input to Hop Springs for the brewery to create small-batch brews that will only be served in the beer garden. Each beer will have a different name with a theme related to the week's opponent.

We are hopeful that this project will both enhance our fan experience at Floyd Stadium and provide additional exposure for our Fermentation Science program in our College of Basic and Applied Sciences.

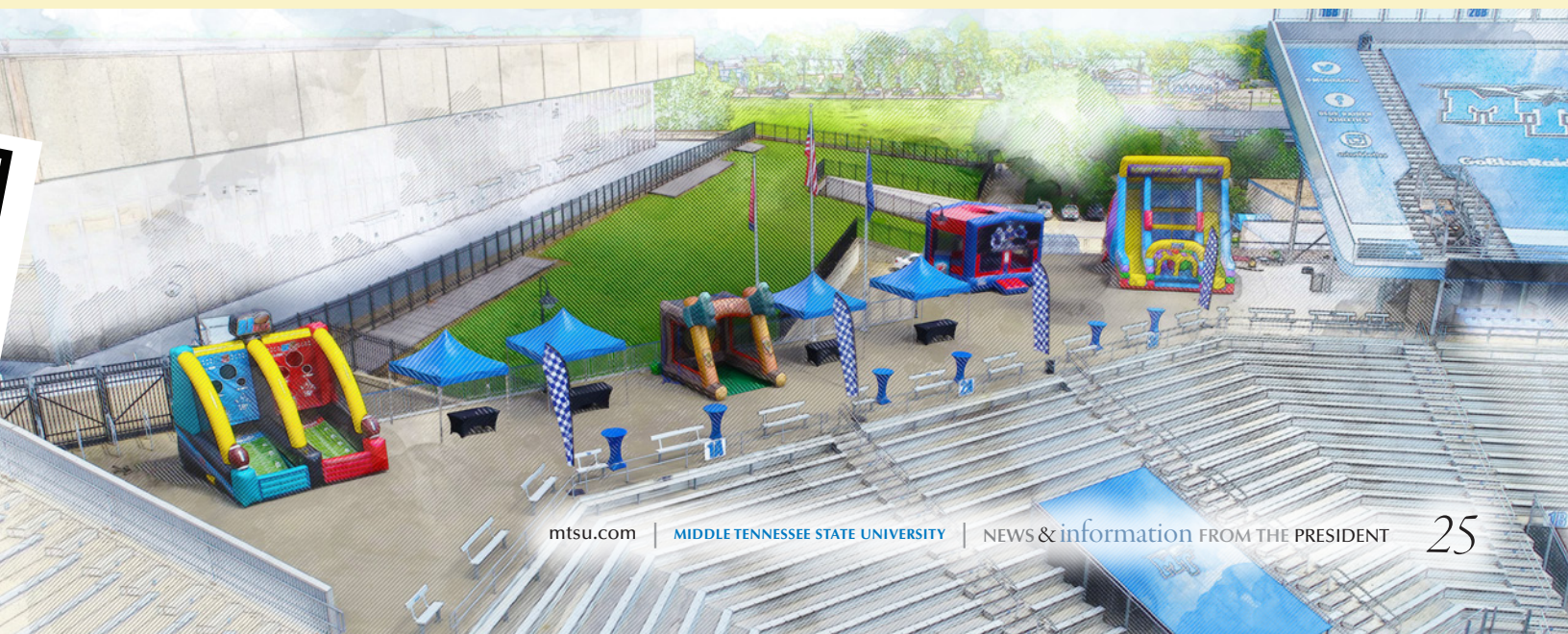
MT adds Blue Raider family fun zone at football games this fall

Yet another new fan-friendly attraction inside Floyd Stadium this football season will be the Blue Raider Family Fun Zone provided by Tennessee Event Specialist.

Located on the upper concourse in the north end zone, this area has been created with kids in mind.

Each week there will be different activities for all kids in attendance to enjoy during the game, including four inflatables, a face painter, balloon artist, and various carnival games throughout the season. Picnic tables scattered throughout the area will allow families to socialize as they watch their kids play.

The Family Fun Zone will also be a check-in point for this year's Blue Raiders Kids' Club attendees. At the last game of the football season, we will recognize the members that attended the most games. Also, this is where Blue Raider Kids' Club members will get their exclusive giveaway at their dedicated game on November 23. All children 12 and under are invited to join the Blue Raider Kids' Club. [MTSU](https://www.mtsu.edu)



Blue Raider sports teams experienced another exciting and productive year. Since our University accepted an invitation to join Conference USA in November 2012, Blue Raider squads have consistently reached postseason play, won championships, and earned C-USA All-Academic team status.

The statistics I get the most excited about, though, are the ones our student-athletes—a special student population by any measurement, given the level of commitment required to both maintain academics and excel in Division I sports—are generating in the classroom.

Teams shine in latest NCAA academic report

A perfect 100% of Middle Tennessee's athletic teams have now had a multi-year Academic Progress Rate (APR) of at least 930 for 10 years running. All 17 Blue Raiders sports teams even earned a multi-year APR of over 960 (out of 1,000) in the National Collegiate Athletic Association (NCAA) report released May. The most recent APR scores are based on a multi-year rate that averages scores from the 2014–15 through the 2017–18 academic years. Middle Tennessee had 13 of 15 sports—indoor and outdoor track count as one—with at least a 982 on the multi-year report, with men's cross country, women's golf, and women's tennis posting a perfect grade of 1000. Seven other sports were close behind with scores over 990: baseball (996), women's volleyball (995), women's cross country (994), softball (993), soccer (992), men's golf (992), and men's tennis (992).

Record 28 inducted into national honor society

Middle Tennessee's athletic department inducted a record 28 student-athletes into the Chi Alpha Sigma National College Athlete Honor Society on March 19 at the Rose and Emmett Kennon Hall of Fame. Chi Alpha Sigma is a nonprofit organization established to recognize college students who earn a varsity letter in at least one sport while maintaining a 3.4 or higher cumulative GPA throughout their junior and senior years.

171 Raiders on C-USA Honor Roll, 53 earn Academic Medal

Middle Tennessee saw 53 student-athletes earn the Conference USA Commissioner's Academic Medal (3.75 cumulative GPA or higher) and 171 student-athletes placed on the C-USA Commissioner's Honor Roll (3.0 cumulative GPA or higher) this past academic year. During the 2018–19 tenure, the football team led the way in the honor roll category with 39 recipients, followed by 21 from soccer and 19 each from baseball and softball. Soccer had the most academic medal category with 10 recipients, while men's tennis and baseball added seven each.

Now here are some top athletic achievements:

Rick Insell, 333rd victory at MTSU

Women's coach Rick Insell became the winningest coach in Middle Tennessee's basketball history with his 333rd career win on Jan. 26. With North Texas visiting Murphy Center, the record-setting win came in tough, gritty fashion as his Lady Raiders



Coach Rick Insell (r)

BLUE RAIDERS STAR IN THE CLASSROOM

3.0 GPA or above

12 of 15 teams recorded a semester GPA of 3.0 or above

Highest men's team GPA

Highest men's team GPA: tennis, 3.84

Highest women's team GPA

Highest women's team GPA: tennis, 3.90

PERFECT 4.0

36 (11%) of all student-athletes notched a perfect 4.0

Dean's List

113 (35%) of all student-athletes made the Dean's List by earning a 3.5 or higher

3.0 GPA or higher

197 of 321 (61%) of all student-athletes had a 3.0 GPA or higher

Semester GPA

Semester GPA for all student-athletes: 3.074

Cumulative GPA

Cumulative GPA for all student-athletes: 3.115

NCAA Awards

Baseball, women's golf, men's cross country, and women's tennis were honored with NCAA Public Recognition Awards for Academic Progress Rate (APR)

prevailed 61-46. The 14-year head coach ran his record to 333-115 at his alma mater, with every victory coming against Division I opponents. His win total surpassed former men's basketball coach Kermit Davis.

Women's basketball, 900th win

The women's basketball team also joined elite company with the program's 900th all-time win, 62-55

against Charlotte on Feb. 7. The Lady Raiders became just the 32nd Division I women's basketball team (out of 351) to accumulate as many victories.

Two Lady Raiders basketball standouts earned Conference USA Specialty

Awards after dynamic debut seasons. Senior guard A'Queen Hayes was named the C-USA Newcomer of the Year, while point guard Taylor Sutton was honored as C-USA Freshman of the Year.

Men's basketball

Blue Raider guard Antonio Green was voted as the league's Newcomer of the Year for the 2018-19 basketball

continued on page 28 ▶



A'Queen Hayes



Taylor Sutton



Antonio Green

Athletics continued from page 27

season. The award, voted on by the league's coaches and media members, goes to the league's best transfer playing their first season in C-USA. Green took Murphy Center by storm in his junior campaign, ranking fifth in Conference USA in points per game (18.3), second in 3-point field goals made (104), and second in free throw percentage (.871).

Men's tennis, C-USA championship

For the first time in Middle Tennessee tennis history, the Blue Raiders brought home the Conference USA title in a come-from-behind dramatic win over FAU on April 21 at their home Adams Tennis Complex. The Blue Raiders clinched an NCAA berth for the first

time since winning the Sun Belt Conference title in 2012.

Women's golf

Middle Tennessee's Hanley Long was named the Conference USA's Female Golfer of the Year following her record-breaking campaign. She is the first Blue Raider in the program's 18-year history to win conference Golfer of the Year honors in either the Sun Belt or C-USA.

Men's golf, repeat C-USA champions

After a difficult offseason that saw his roster depleted, new men's golf head coach Mark McEntire led his revamped squad to a spectacular triumph April 24 in clinching its second consecutive C-USA Championship. The Blue

Raiders earned their third consecutive NCAA Regional berth after hosting the College Grove Regional in 2017 and competing in the Raleigh Regional in 2018. McEntire was named Phillip Hatchett C-USA Coach of the Year. Senior Marcus Byrd was selected as C-USA Male Golfer of the Year.

Men's track

Kigen Chemadi earned C-USA Male Track Athlete of the Year honors for 2019.

Middle Tennessee's men captured their second Conference USA Indoor Track and Field title in three years on Feb. 17. Dean Hayes was named the C-USA Men's Coach of the Year, and Jacob Choge had the highest individual point total of any male athlete. [MTSU](http://mtsu.com)



Hanley Long



Mark McEntire



Kigen Chemadi



Marcus Byrd



Jacob Choge (front)



Coach Dean Hayes



PROUDLY PRESENTS

MTSU Arts

ART • DANCE • MUSIC • THEATRE

The College of Liberal Arts invites you to join us this semester at the following MTSU Arts featured concerts, exhibits, and productions.

FALL ARTS CALENDAR

Department of Art and Todd Art Gallery present:

“Story Me This: Narrative Quilts”
by Susan Sharpe

Sept. 28–Oct. 12, (opening reception and workshop: Sept. 28)
Todd Art Gallery,
Todd Hall Building (Room 224A)

School of Music presents:
MTSU Women’s Chorale with the MTSU Meistersingers

Oct. 3, 7:30 p.m.
Hinton Music Hall,
Wright Music Building

Department of Theatre and Dance presents:

Kiss Me Kate

Oct. 24–26, 7:30 p.m.; Oct. 27, 2 p.m.
Tucker Theatre, Boutwell
Dramatic Arts Building

MT Dance Program presents:

Fall Dance Concert

Nov. 21–23, 7:30 p.m.
Tucker Theatre, Boutwell
Dramatic Arts Building

MTSU Arts presents:
“Joys of the Season”

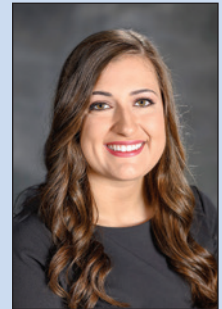
Dec. 1, 3 p.m.
Tucker Theatre, Boutwell
Dramatic Arts Building

For a full calendar of events or to learn how to become a member of the **MTSU Arts Patron Society**, please visit mtsuarts.com.

Ascend Federal Credit Union is the official credit union of MTSU Arts. mtsu.com

DELANIE McDONALD BECOMES MTSU’S STUDENT GOVERNMENT ASSOCIATION PRESIDENT

MTSU’s Student Government Association (SGA) also has new leadership. New president **Delanie McDonald** brings a wealth of experience to her position. Her leadership experience at MTSU includes the Freshman Council, the SGA Senate, and executive vice president.



Delanie McDonald

McDonald said she would like to use her new position to convince students that SGA hears their concerns and can be a force for change.

She said many students are unaware of the resources the organization has available. For example, student government can provide student groups with up to \$5,000 to stage events if they engage SGA as a partner.

Other assets McDonald wants to emphasize are the accessibility and openness of University administrators in dealing with SGA representatives.

McDonald, a Public Relations major, has an office in Room 306 of the Student Union. She can be contacted at 615-904-8265 or sgapres@mtsu.edu. mtsu.com



ENRICH
YOUR LIFE
showcase your skills

mtsuarts.com

QUEST 2025 AND COURSE REDESIGN

By any measure, together we've achieved a tremendous level of success in the last year. We can, and should, take great pride in our achievements.

At the same time, we understand the dynamic nature of higher education. To be relevant, our strategic plans and **our goals must change with the times**. To remain on the cutting edge, we must do even more. We must project ahead. We must think boldly and act boldly. We must be our own architects for the future.

Our original Quest for Student Success, implemented in 2013, set ambitious goals that led to significant improvements in student retention and graduation rates over the past five years. These achievements have set the stage for us to bolster our Quest for years to come and further define our Academic Master Plan.

To launch this process, I convened several members of our faculty and staff, under the leadership of Provost Mark Byrnes, to glean our best and boldest ideas of how we can continue to strengthen our efforts toward helping students become academically successful. Provost Byrnes, members of the Quest 2025 committee, and recently retired administrator and faculty member Faye Johnson have taken these ideas to create a roadmap to move us forward. Their work has culminated in our vision statement expressed in the Quest for Student Success 2025.

Quest 2025 focuses on student success marked by a **deeper and broader academic and student life experience** that extends learning beyond graduation. Students will learn:

- how to learn
- how to ask the right questions
- how to take risks and learn from their mistakes
- how to succeed personally and professionally

Here are a few key components of our updated Quest plan.

The ultimate goal is to graduate students who are:

- prepared to thrive professionally
- committed to lifelong learning
- actively engaged as citizens of their communities and the world

The committee has developed three areas of focus:

1. Enhance the quality of the academic experience by helping faculty engage with students.
2. Enhance the quality of the student life experience.
3. Build an academic and student support network that facilitates learning.

The plan will include specific measurable metrics to be accomplished.

In summary, the new Quest for Student Success 2025 underscores the University's core mission: **to produce graduates who are prepared to thrive professionally, are committed to critical inquiry and lifelong learning, and are engaged as civically, globally responsible citizens.**

I also am excited to share an update about our efforts in **general education redesign**. Our campus prides itself on offering an excellent, well-rounded education with great value for our students. In our continuous efforts to strive toward greatness and growth, MTSU is leading the way in the state in general education reform. This has been a faculty-driven process with student involvement and will continue to be so.

As redesign efforts continue this year, you will be given the chance to **shape the curriculum of the future by participating in town halls** and other opportunities for feedback. I hope you will participate as fully as possible in the process.

Next week, we'll launch our redesigned strategic plan for the **True Blue Core**, complete with a virtual launch event on Aug. 26. I invite you to participate in the redesign process and keep an eye out for communication from the provost with further details.



BUDGET AND SALARY OVERVIEW

In his first year in office, Tennessee Gov. Bill Lee proposed and subsequently received approval from the state legislature to fully fund the THEC outcomes-based formula. This year's budget did not contain a separate funding allocation for salary increases, but did include additional funds to be used for salaries and/or operational expenditures at the discretion of the University. Although MTSU had a reduction of \$1.5 million

in the outcomes formula, the net impact to MTSU was an **increase in state appropriations of \$3.8 million.**

At the June quarterly meeting, the MTSU Board of Trustees approved a combined tuition and mandatory fee increase of 2.37%. New funds from this increase, along with the appropriations increase, will cover MTSU's portion of a 2% pool for salary increases, provide monies for faculty promotions and adjunct salaries, fund increased scholarship levels, support student success initiatives, and pay for increased fixed costs related to software maintenance agreements, utilities, and facility maintenance.

At the same meeting, our Board of Trustees approved a plan to split the 2% salary pool into two parts: cost of living adjustments (COLA), effective this past July 1, and to address needed market adjustments through the compensation plan.

The COLA strategy was for an **across-the-board salary increase** for eligible MTSU employees of 1% or \$500, whichever was greater. The salary increase applied to all unrestricted and restricted regular full-time and part-time benefit-eligible employees and participants in the post-retirement service program on the payroll as of

June 30 this year. Eligible employees received the increase starting this fiscal year based on their July 1 salary, while faculty increases were effective Aug. 1. Part-time benefited employees received a prorated payment. These increases do not apply to adjunct faculty, temporary employees, graduate assistants, or student workers. If grant funding is available, increases for grant employees are charged to the appropriate grant, and likewise, increases for auxiliary employees are funded from auxiliary revenues.

A separate line item in the 2019–20 approved University budget relates to **an increase in adjunct salaries.** MTSU is raising adjunct pay starting this fall to a flat rate of \$800 per number of credits granted toward the faculty load (which may differ from the number of student credit hours), moving away from the current four-rate structure.

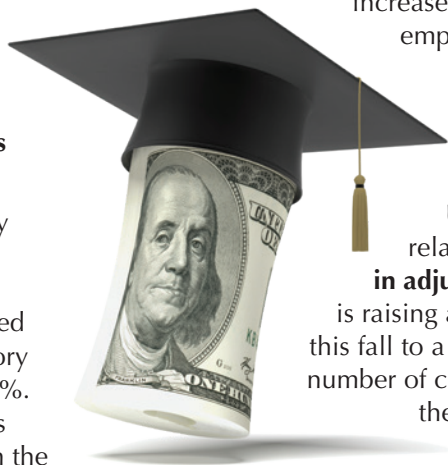
The balance of the salary pool, along with additional funds generated from enrollment this fall, is reserved to

implement part of the University's compensation plan for employees. A **plan for market adjustments**, effective in January, will be taken to the MTSU Board's Finance and Personnel Committee at its November meeting.

The state legislation again provided funding to match eligible employees' deferrals in the 401(k) plan, which may be between \$20 and \$50 per month, and for longevity payments at \$100 per year of creditable service up to a maximum number of 30 years.

In addition, the state budget included \$4.7 million in capital maintenance funds for MTSU for mechanical, HVAC and electrical updates for Kirksey Old Main (KOM), Stark Agriculture Building, and the Police Station; stormwater BMP Phase 1; Miller Education Center boiler replacement; and roof replacements. MTSU also received \$170,000 for ADA improvements.

The governor further recommended \$232.65 million in capital outlay funding for all of higher education, which included funding for a new 54,000-square-foot-building for Concrete and Construction Management. [MTSU](#)



MTSU Trustees Stephen Smith and Darrell Freeman at a recent Board meeting.

TRUE BLUE VOTER

MTSU's American Democracy Project (ADCP) is the commons for civic learning, civic engagement, and student voting. Its goal is to produce graduates who understand and are committed to engaging in meaningful actions as citizens in a democracy. By working with students and faculty, the American Democracy Project seeks to nurture programs inside and outside the classroom that raise the levels of our campus community's engagement with the local, national, and global communities around us. Middle Tennessee State University has participated in this national initiative since its founding in 2003.

In concert with the ADP, True Blue Voter registrations will be back in full swing in early January, ahead of the 2020 presidential primaries in Tennessee March 3.

Launched in 2018, the **True Blue Voter initiative** is a "model partnership" between MTSU and the Rutherford County Election Commission to inform students about voter registration and absentee voting. With the expertise of the county election commission, the initiative can assist students in registering to cast ballots, including absentee ballots, in any Tennessee county.

We are proud to help students mitigate the roadblocks that can impede them from registering to vote. The True Blue Voter initiative provides students with information they need to become successful voters through individualized processes that best fit their circumstances. If a student wants to vote in Rutherford County, we can assist with that, or if they prefer to vote in their hometown elections as well as national elections, True Blue Voter simplifies the absentee voting process so students do not have to travel home to vote.

Constitution Week 2019 and the Fall Honors College Lecture Series will focus on suffrage and student voting, beginning a year-long University dialogue around citizens' roles in our participatory democracy, to prepare for the upcoming 100th anniversary of the passage of the 19th Amendment to the U.S. Constitution. Considering the pivotal

True Blue Voter registrations will be back in full swing in early January, ahead of the 2020 presidential primaries in Tennessee March 3.

role that Tennessee played in ratifying this amendment, which granted American women the right to vote, the centennial is a commemoration of great significance to the state's largest university community. For more information, visit mtsu.edu/honors/lecture-series/.

The Honors Lecture Series spans the fall semester from September through November. Hour-long lectures take place every Monday at 3 p.m. in the Honors Amphitheater (Room 106), unless otherwise noted. The full lineup of events can be found at the Honors Lecture Series site. The schedule for September's kickoff is detailed below.

► **Sept. 9:** Professor Sekou Franklin launches the Fall 2019 series with an introductory lecture, "The 15th Amendment, African American Suffrage, and the Ongoing Struggle for Voter Justice."

► **Sept. 16:** Constitution Week begins with a panel at Tucker Theatre at




Former Vice President Al Gore

3 p.m. titled "Albert Gore Sr.: Voting Rights, Civil Rights, and Public Policy," a conversation between former Vice President



Watch out for True Blue Voter assistance leading up to the 2020 elections to encourage students to register and vote.



Al Gore and Cambridge University historian Anthony Badger, author of *Albert Gore, Sr.: A Political Life*. What a wonderful opportunity to learn from this discussion with Badger, one of the most significant historians of our time, as he discusses the life of the Tennessee political legend Al Gore Sr. with his son, who carved out a national reputation as a political and environmental leader in his own right.

- ▶ **Sept. 17:** This year's **Constitution Day activities** include readings of the Constitution at every college across campus by all the members of the University community starting at 9 a.m. At 2:30 p.m. in Tucker Theatre, Margaret Renkl, author and *New York Times* contributor, moderates a discussion with women's historian and national scholar Marjorie Spruill about voting rights, woman suffrage, and her book *Divided We Stand: The Battle Over Women's Rights and Family Values That Polarized American Politics*. This thought-provoking event, "The Vote for Women—and All Americans: Activism and Citizenship," includes state Rep. London Lamar and also takes place in Tucker Theatre.
- ▶ **Sept. 23:** MT Engage Week features an important legislative panel, "Engaging Our Legislature: Civic Participation, Citizenship, and Voting in Tennessee," with members of the Tennessee General Assembly, including Rep. Charles Baum (an MTSU professor), Rep. Mike Carter, Rep. Bryan Terry, and Sen. Shane Reeves. Provost Mark Byrnes will moderate their discussion focused on legislative issues impacting college students and all Tennesseans. [MTSU](https://www.mtsu.edu)



YOUR GIFT
true
IMPACT

CHARITABLE GIVING CAMPAIGN

The 2020 MTSU Employee Charitable Giving Campaign will run from Oct. 1 to Nov. 1. In support of a number of local charities, the campaign goal is \$130,000 in pledges this year. With just over 2,200 employees here at MTSU, this goal can be easily attained if each employee pledged \$57 per year. That's just \$4.75 per month.

Gifts may be designated to any charitable organization from a list of 10 independent charities and three federated charitable organizations including Community Health Charities, Community Shares, and local United Ways. The payroll deduction option is provided and is a very cost-effective way of making your gift. Donations pledged for calendar year 2019 will not automatically continue into the new year. Each year you are given an opportunity to change your contributions or to renew an existing one by submitting a new pledge form; therefore, you should submit a new form for the 2020 calendar year. [MTSU](https://www.mtsu.edu)

CONCLUSION

With our faculty, students, and staff working together to find creative solutions, we embrace the challenges facing higher education and chart new ways of propelling ourselves to reach MTSU's potential. We are truly blessed to give back through our work and mission in so many meaningful ways! I thank each member of our faculty, staff, and administration for being a part of this important work, for choosing to make a difference in the lives of others, and for choosing MTSU as your University. I thank you for your passion and True Blue commitment as we begin a new year and forge MTSU's bright path ahead! **MTSU**



**MIDDLE
TENNESSEE**
STATE UNIVERSITY

I AM *true* **BLUE**
MIDDLE TENNESSEE STATE UNIVERSITY